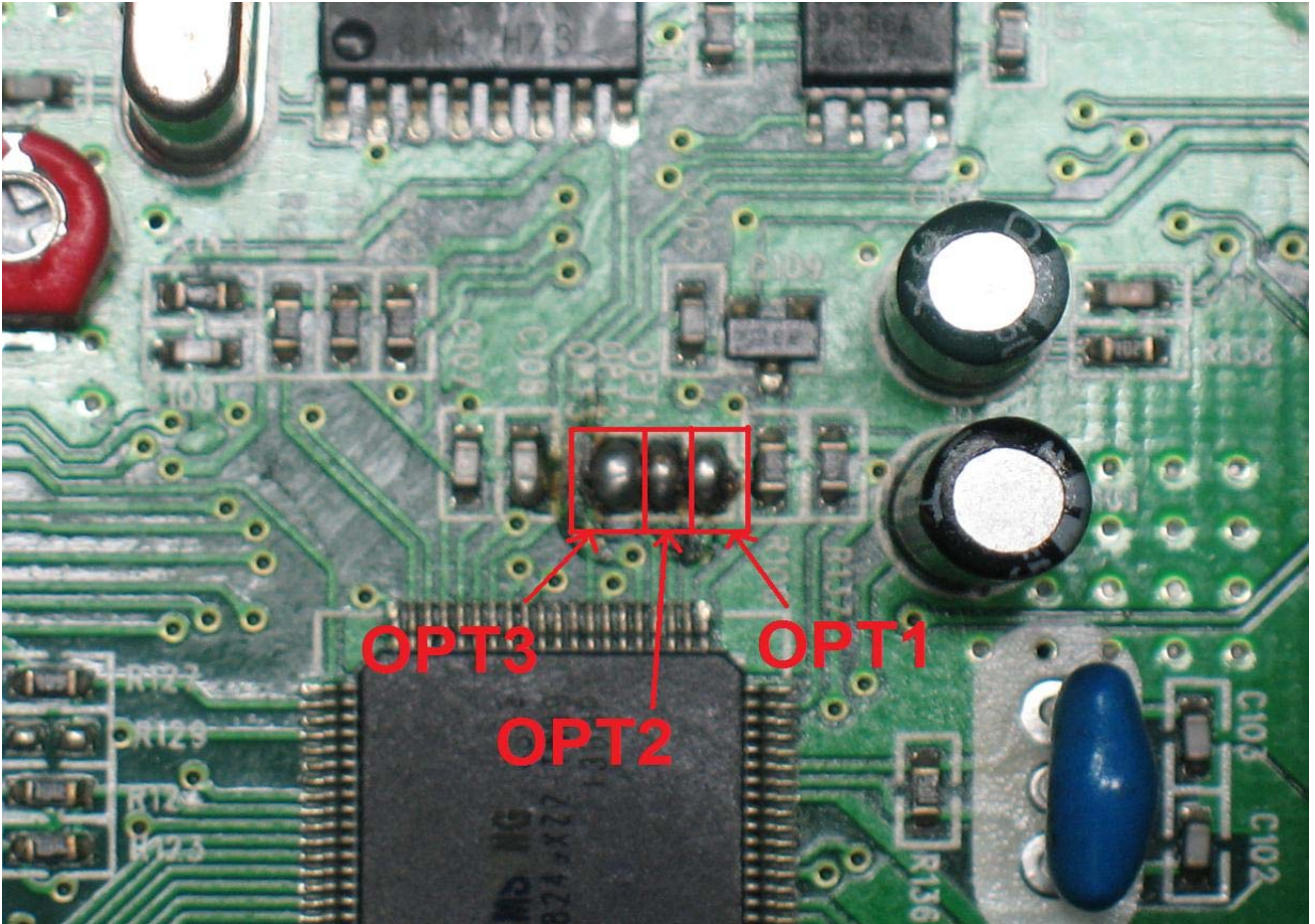


MIDLAND 248

Downloaded from www.cbradio.nl

MODIFICATION TO OPERATION 400CH AND OTHERS BAND ON MIDLAND 248

- Open the radio and remove screw cap.
- Look for the three jumper OPT1,OPT2,OPT3, see you the photo

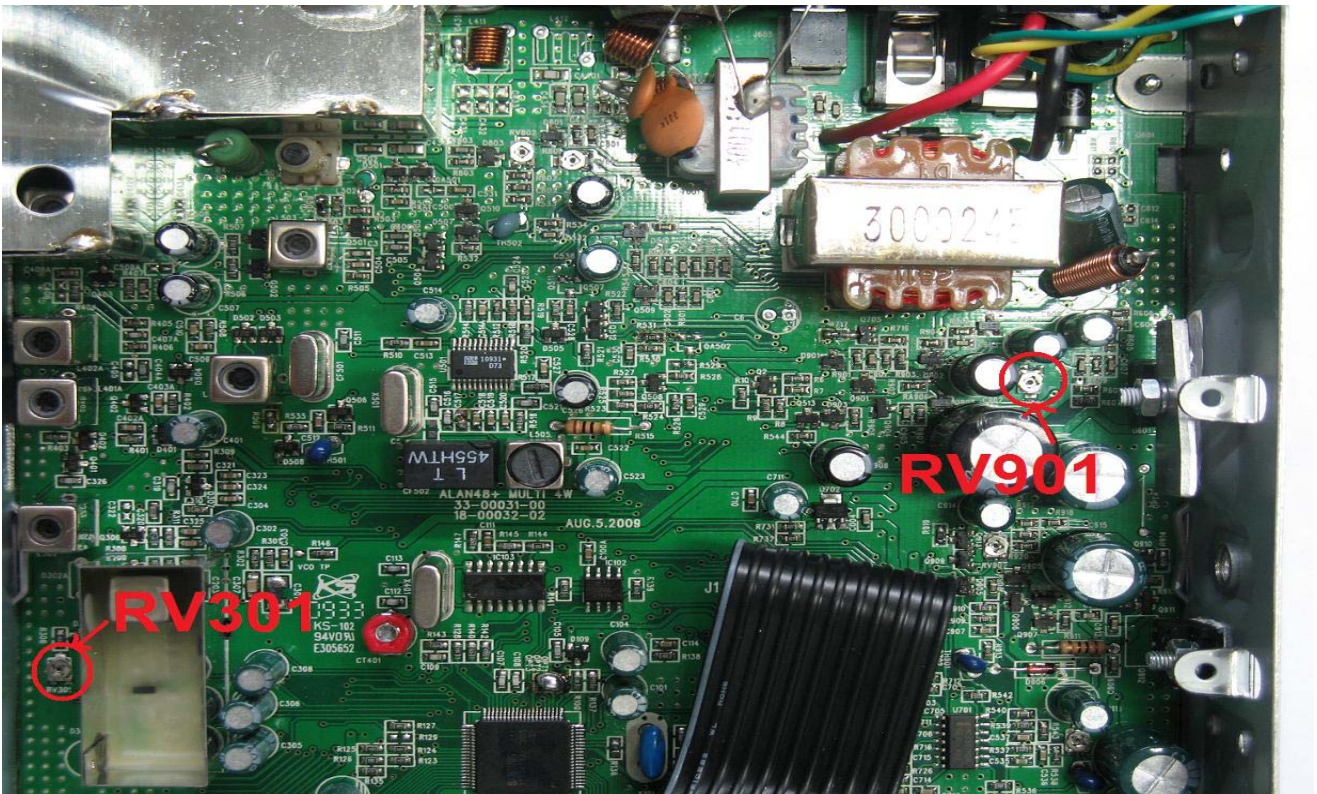


BAND	OPT1	OPT2	OPT3
SW	CLOSE	OPEN	OPEN
RU	CLOSE	OPEN	CLOSE
PX	CLOSE	CLOSE	OPEN
PC	CLOSE	OPEN	CLOSE

Selection the Band

- Power off the radio;
- Keep and hold the buttons 'AM/FM' and 'SCAN' then power on the radio.
- Turn the knob 'CHANNEL' and to select the band.
- Push the button 'AM/FM' to finish the selection.

TRIMMER LAYOUT MODULATION LEVEL AM/FM



- RV901 AM modulation level trimmer
- RV301 FM deviation level trimmer

INCREASE POWER OUTPUT 10W

Cut the wire to increase power output 10W and after adjusting in an anticlockwise the trimmer(RV 902)

