



## CB-Funkgeräte AE 6490 / AE 6491

### Service Manual

**4 W - AM  
Ready**  
for New  
EU-Standard





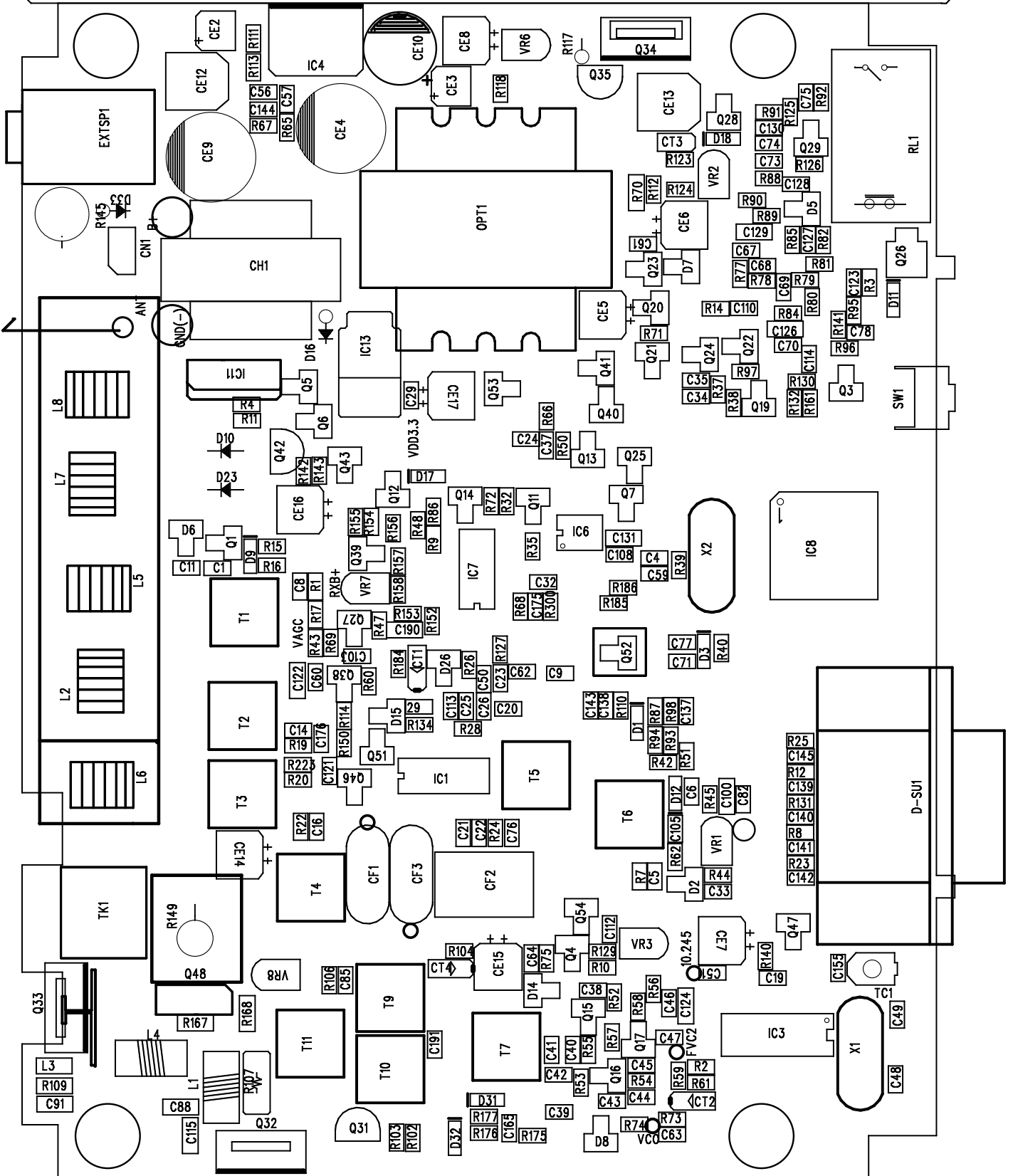








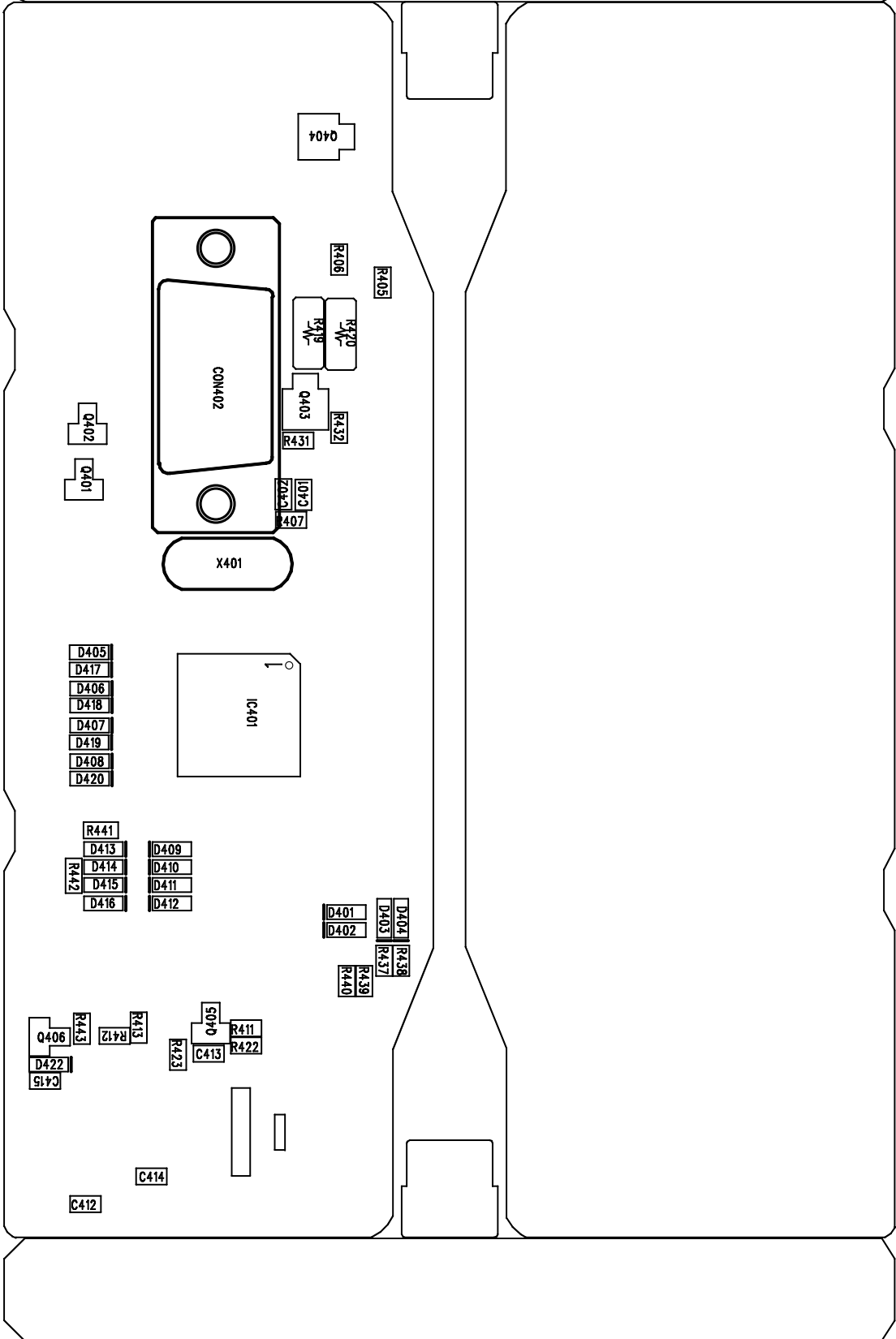
# WIDE Turbo, 907 EUROPE MAIN V1.2



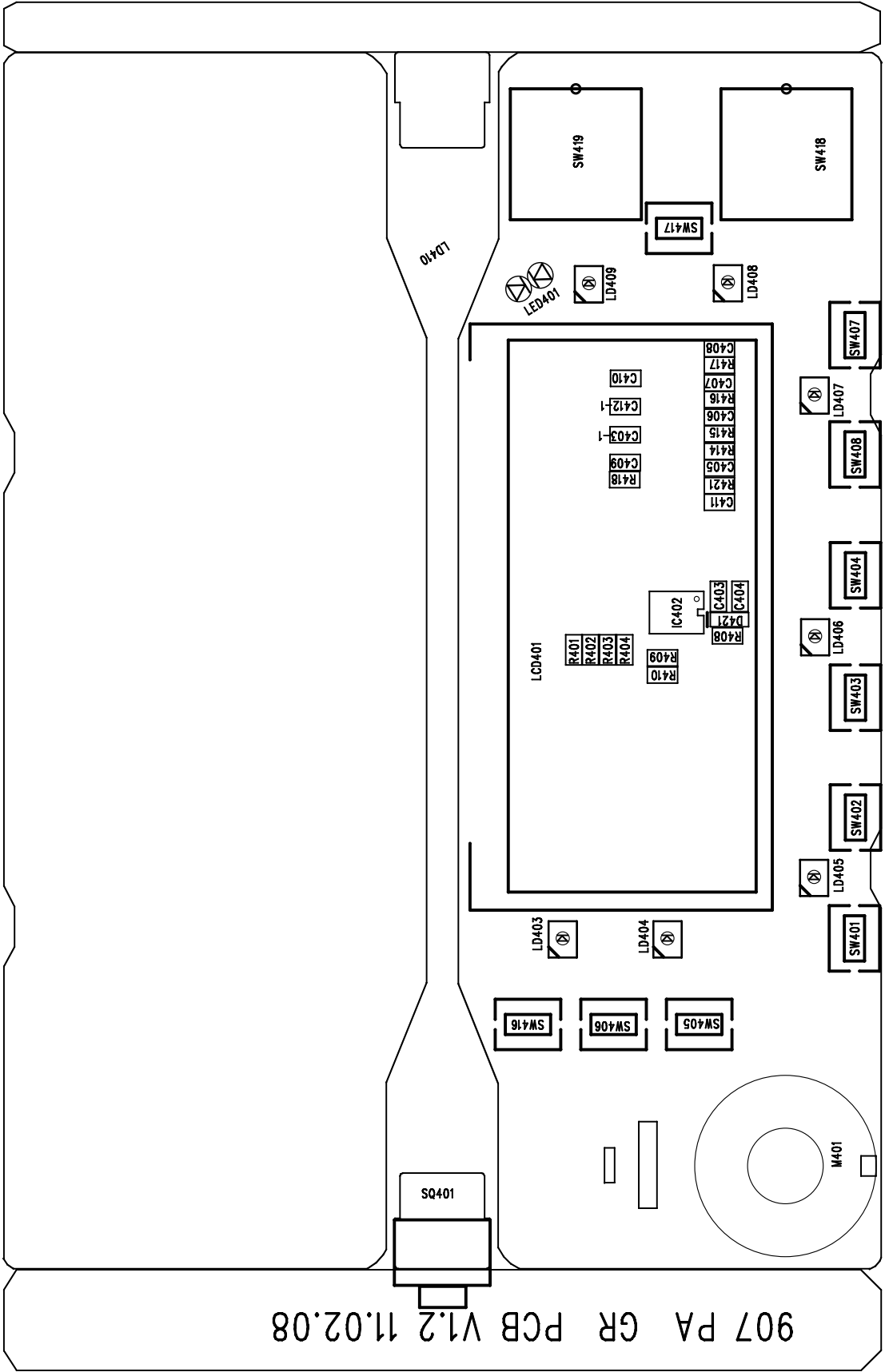
10.07.2/11-03-25



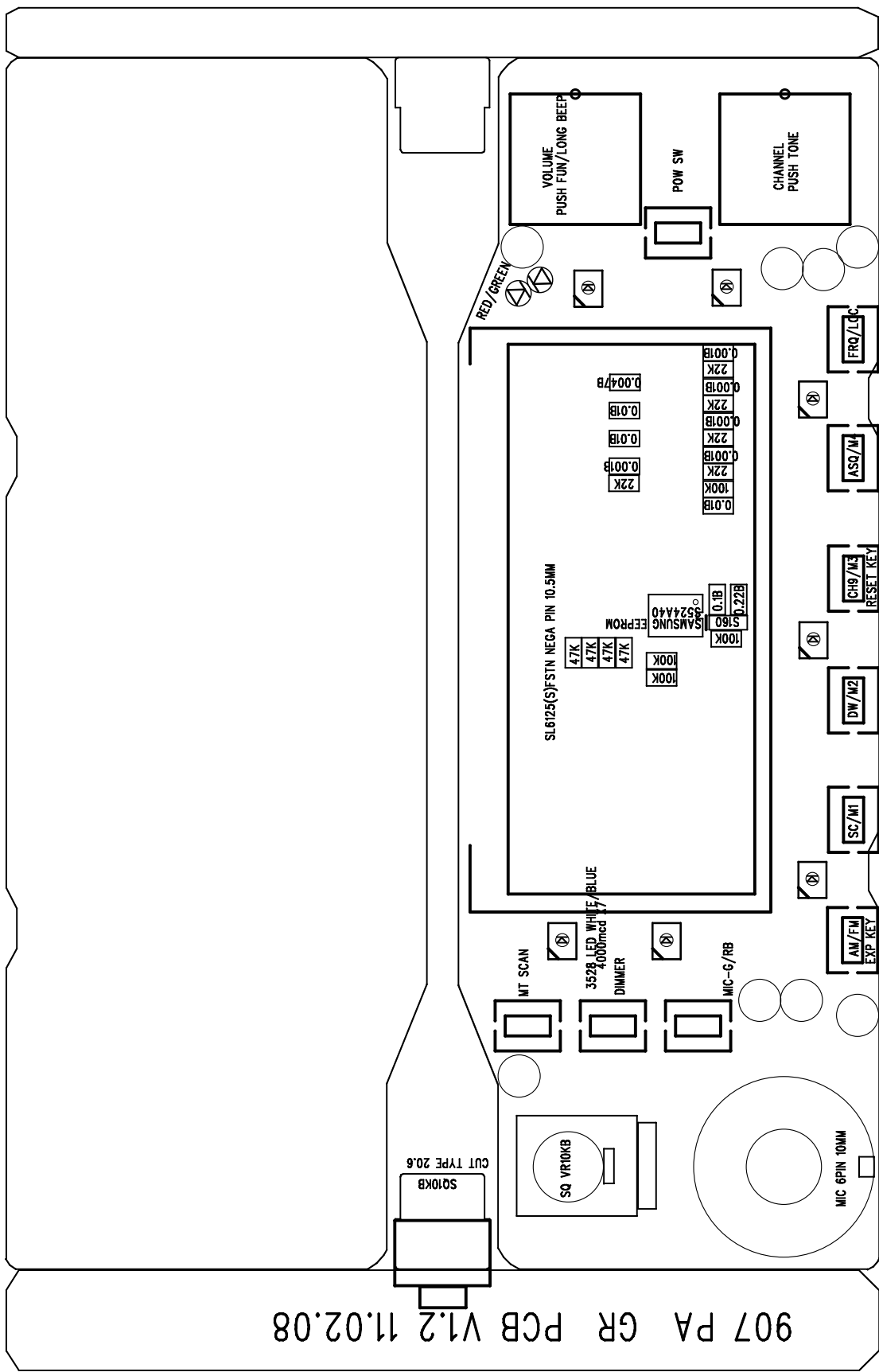




907 PA GR PCB V1.2 11.02.08



907 PA GR PCB V1.2 11.02.08



**Änderungsanweisung für AE 6490/91 - falls nebeneinander stehende LKW sich nicht in AM hören können**

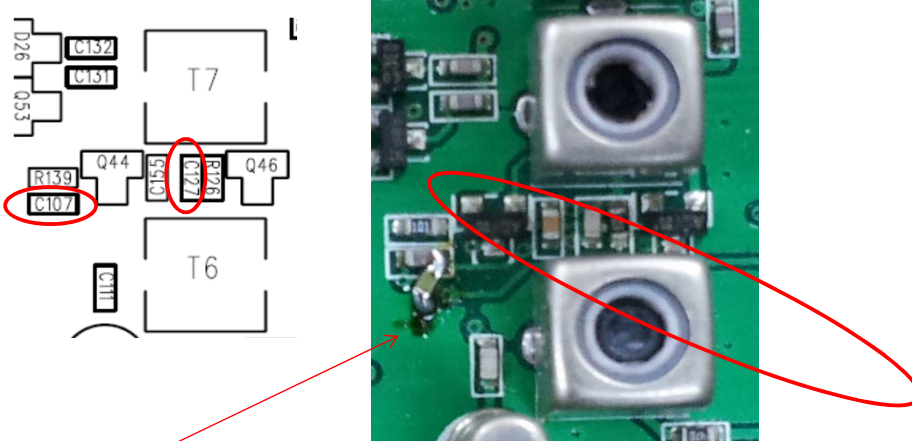
Following capacitor change can solve strong signal behaviour problems in AM

Folgende Kondensatoränderung beseitigt das bei AM Empfang feststellbare Großsignalproblem.

**1. Modification**

Description	Location	Original	Add or change - Hinzufügen
Chip Ceramic	C127	5PF	180PF
Chip Ceramic	C107	12PF	change to 6 pf or keep value as it is - auf 6 pF ändern oder Wert unverändert lassen

**2. Location**



But The C127 position is not easy modify because The solder iron can't touch it.

So we are change of modify, Add Chip ceramic 180PF from C107 to Ground.

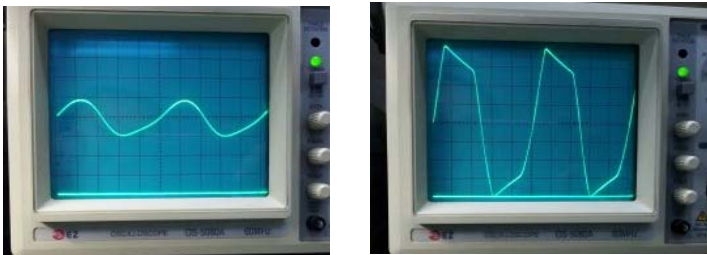
Da man schlecht an C 127 löten kann, ist es einfacher, 180 pF zusätzlich an gezeigter Stelle einzulöten.

**3. Measurement result.**

Test input condition : AM60%, RF output = 0 dBm, measurement channel frequency.

Before)

After)



**4. Circuit.**

