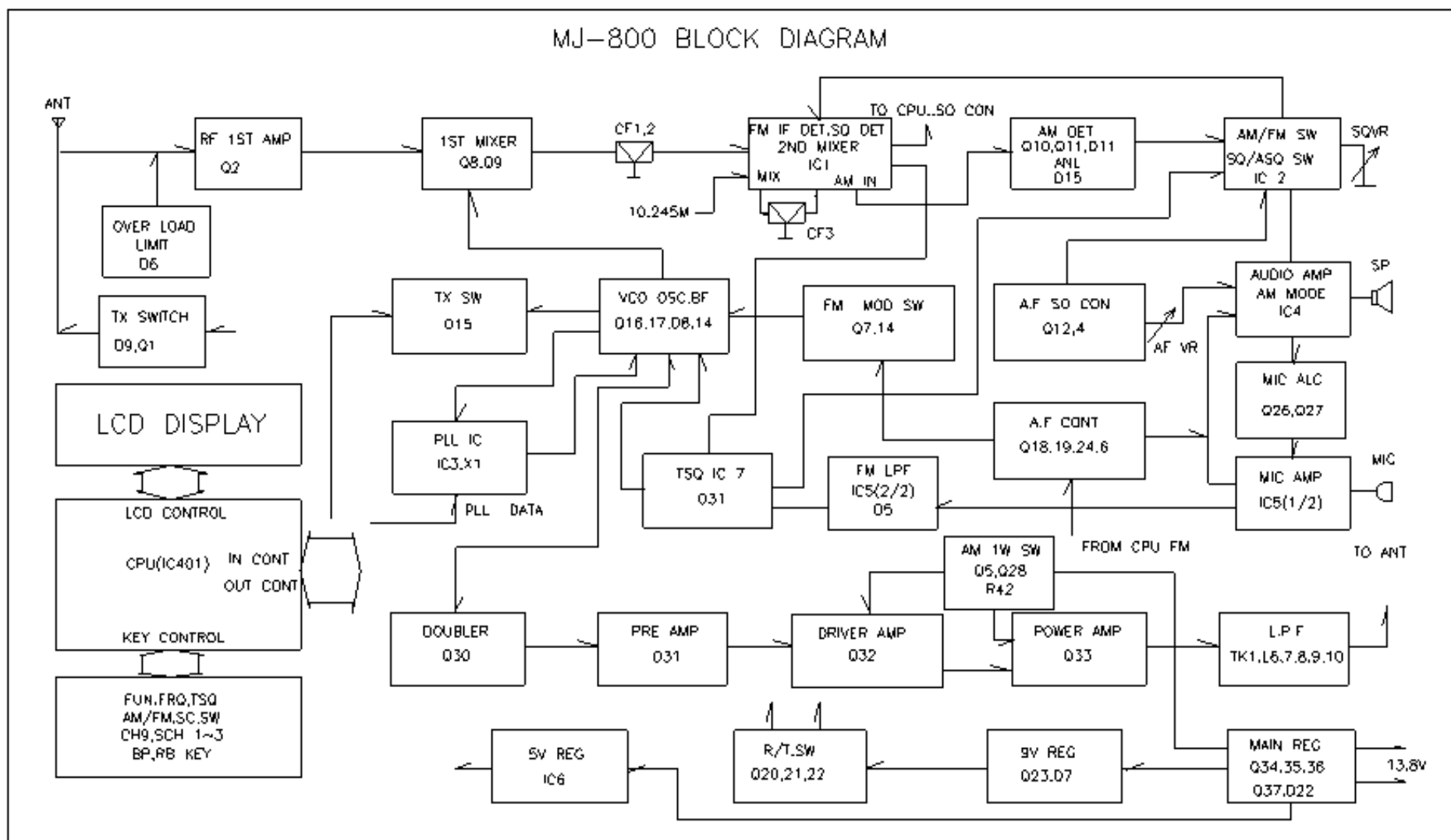


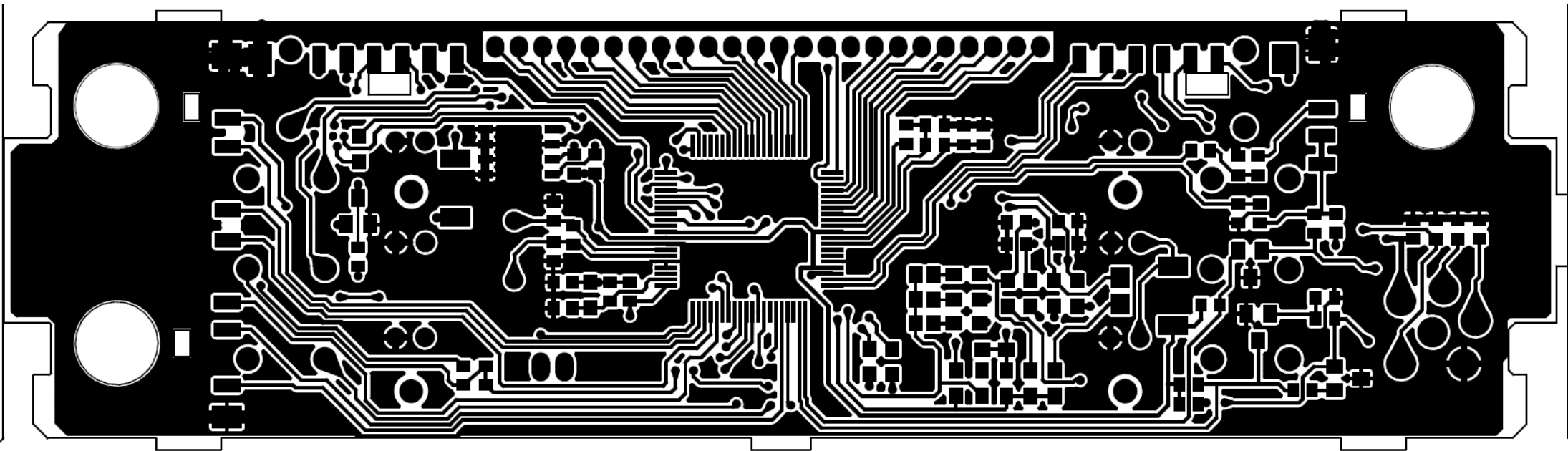


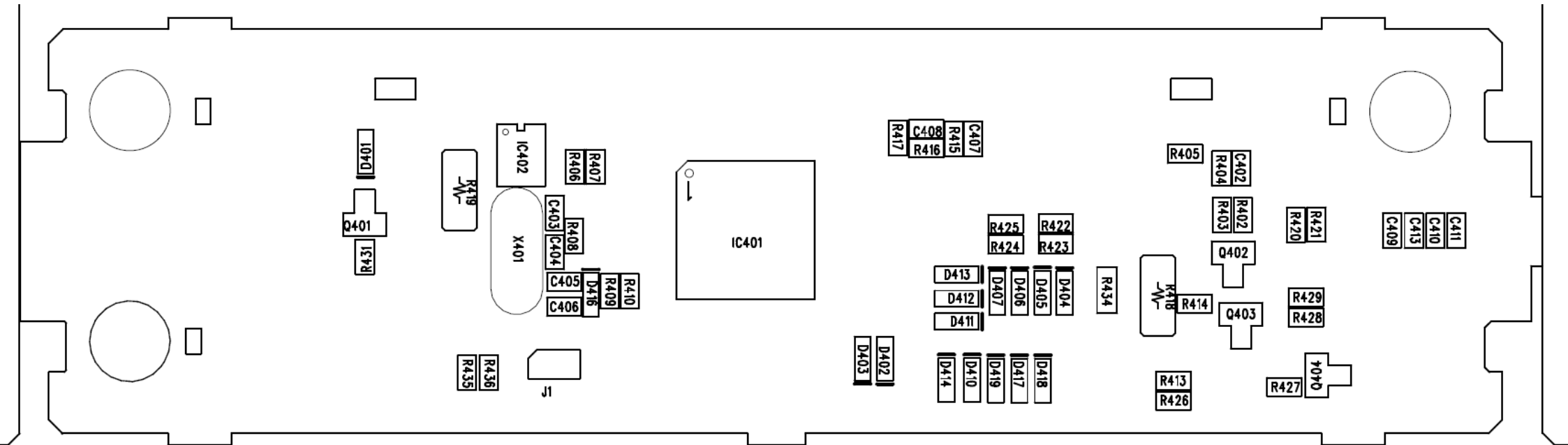
## CB RADIO

### Service Manual AE 6690

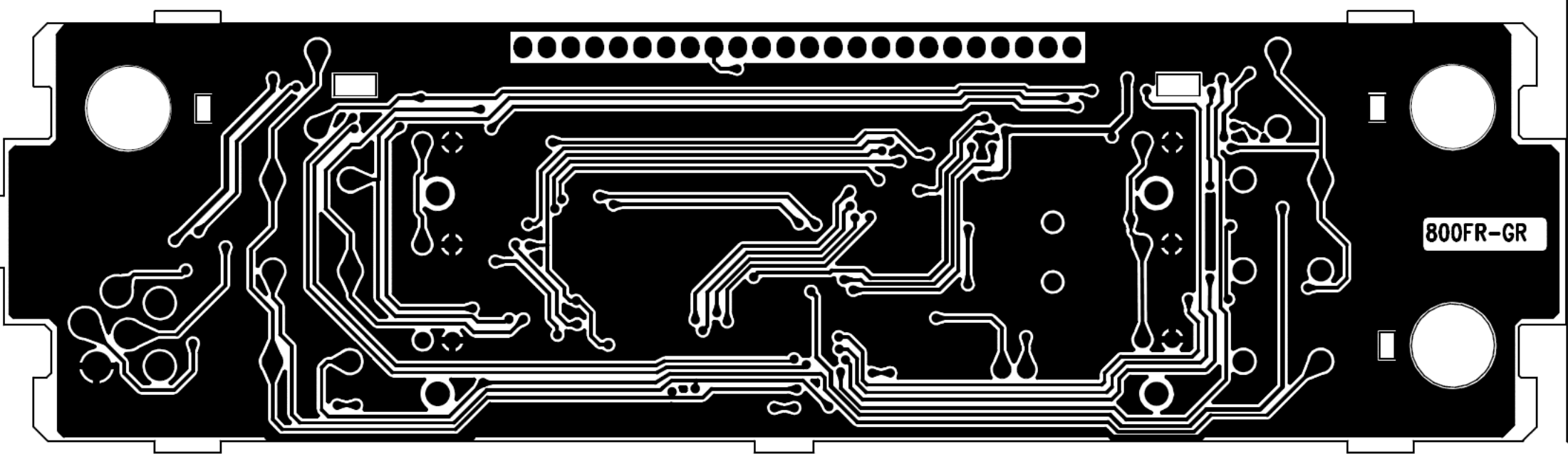
# MJ-800 BLOCK DIAGRAM





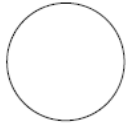






800FR-GR

AFVR 50KA W/SW



SCH/SW  
SW402

SW403  
TOT/M1

SW411  
A.F/M2

SW405  
CH9/M3

LD406

LD401

LD402

LCD401

LCD 24P POSITIVE

LED BLUE 4000mcd X 6  
TACT 2P X 8

LD405

LD404

LD403

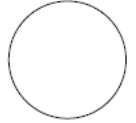
FC/SC  
SW409

SW408  
BP/RB

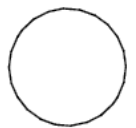
SW407  
TSQ

SW410  
ASQ/FR

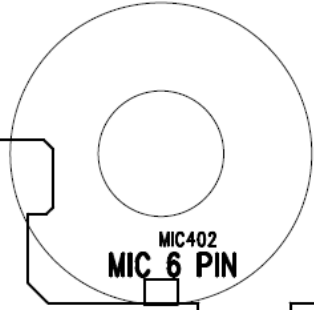
SQVR 10KB

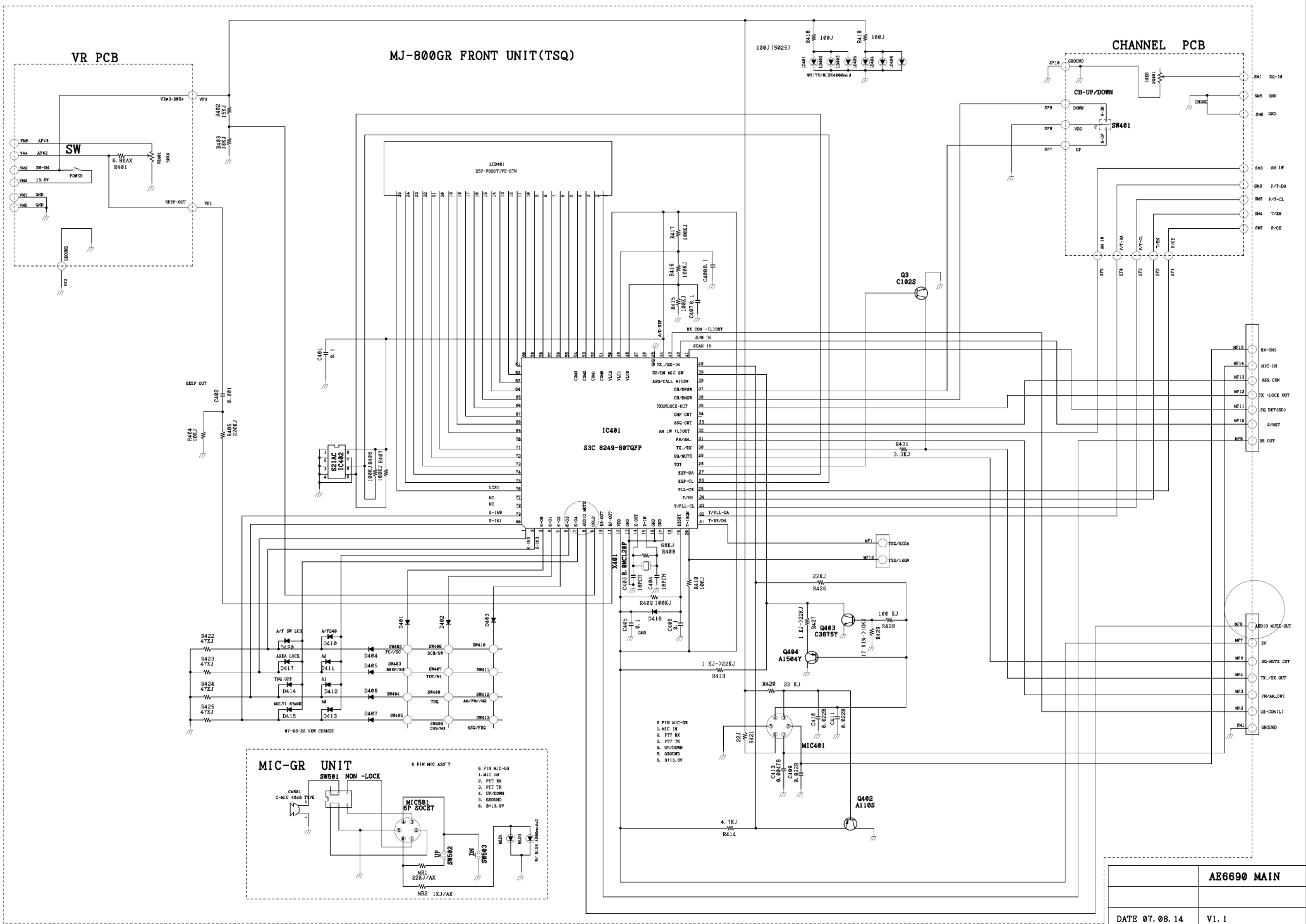


800FR-GR  
CH SW



MIC402  
MIC 6 PIN







-----|

| AE 6690 FRONT, VR MIC PART LIST

2007.06.05

|

-----|

|Item|Qty |Reference|Part Name      |Manufacturer |Description

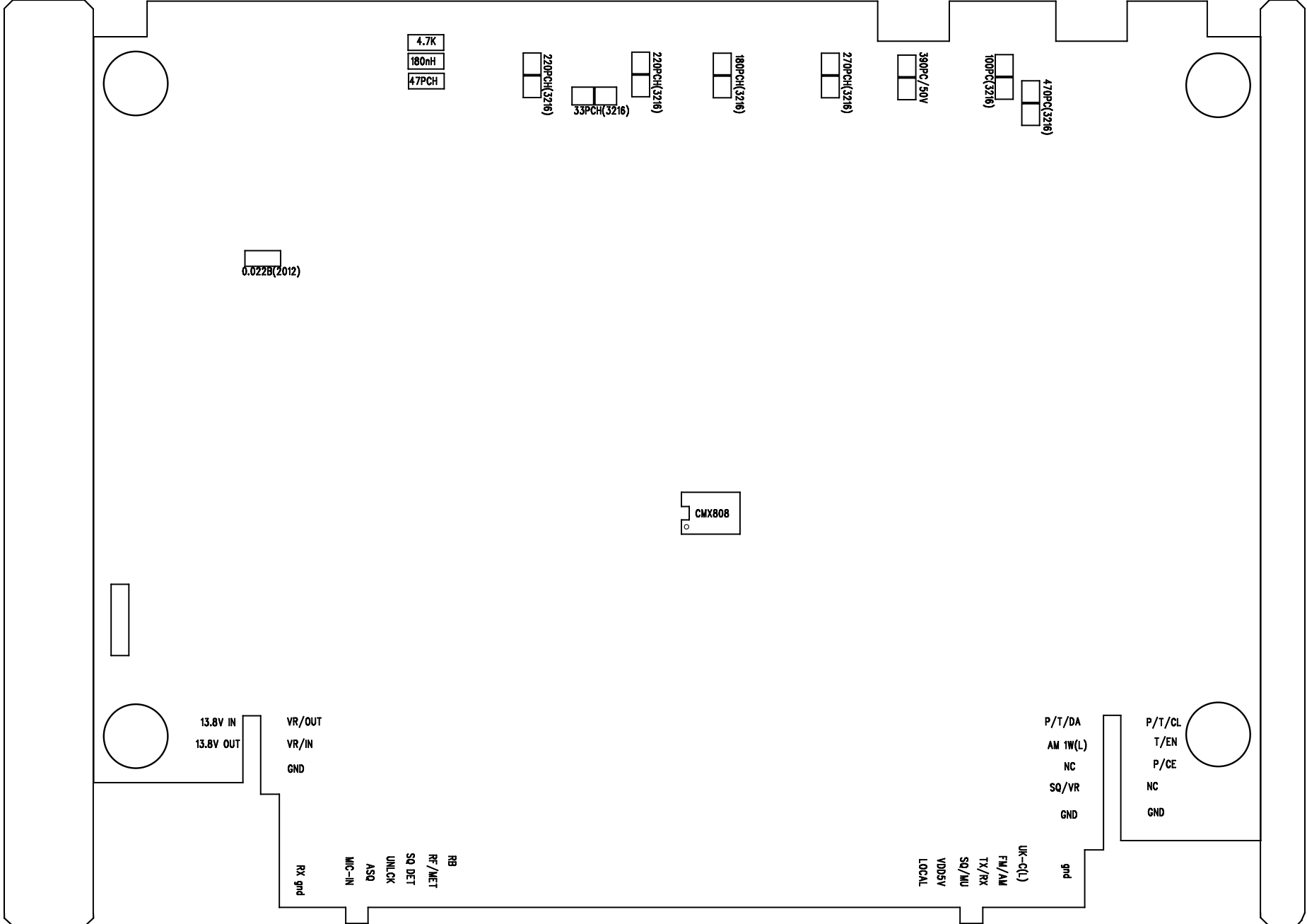
|

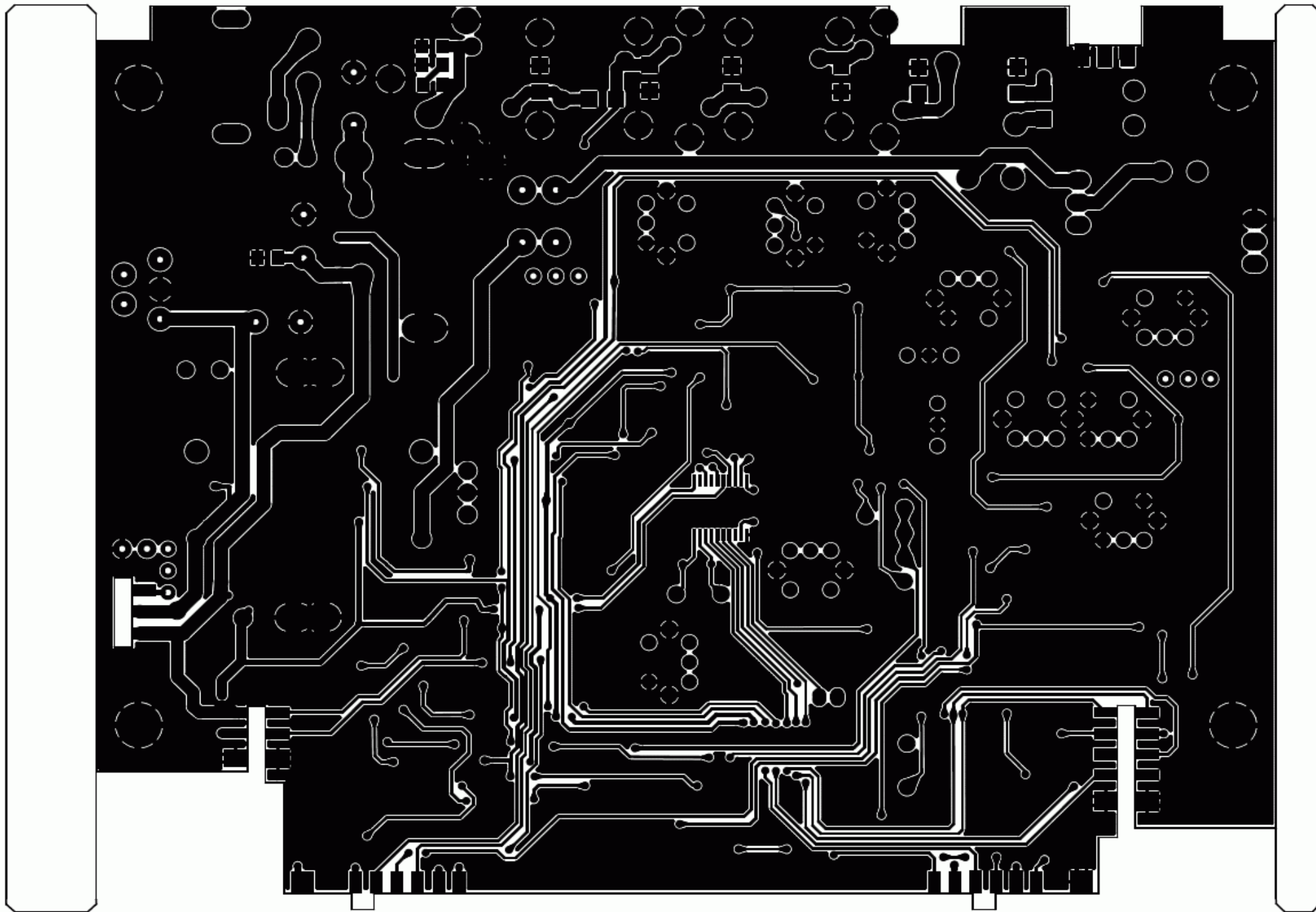
|-----|

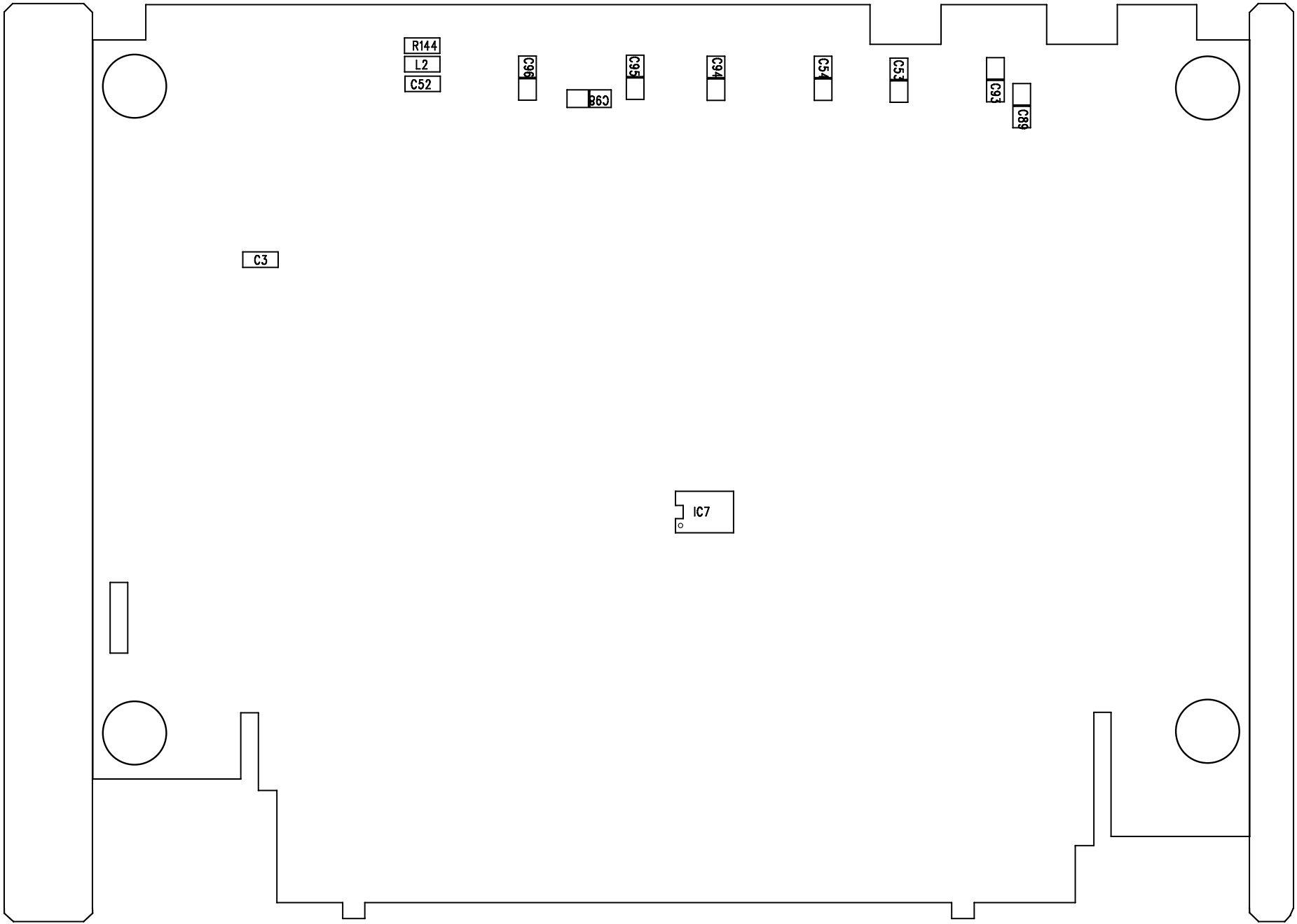
1	1	C402	C-SMD,0.001B			
2	1	C413	C-SMD,0.0047B			
3	3	C409-411	C-SMD,0.022B			
4	5	C401	C-SMD,0.1B			
		C405-408				
5	2	C403-404	C-SMD,18PCH			
6	16	D401-407	D-A,KDS160			
		D410-417				
		D420				
7	1	IC401	IC80TFP,S3C		CPU	
			8249-80TQFP			
8	1	IC402	ICP08,S21AC		EEPROM	
9	1	LCD401	LCD25PA		MJ-800	
10	6	LD401-406	3PIE ,BLUE			
11	1	MIC401	6P CONNECTOR			
12	1	MIC501	MIC-C,6P SOCET		MIC ASSY	
13	1	DY501	MIC-D6,		MIC ASSY	
			150/30PIE			
14	2	R413 R427	R-SMD,1 KJ			
15	1	R428	R-SMD,100 K1%			
16	2	R418-419	R-SMD,			
			56J (5025)			
17	6	R406-407	R-SMD,100KJ			
		R409				
		R415-417				
18	3	R403-404	R-SMD,10KJ			
		R410				
19	1	R402	R-SMD,15KJ			
20	1	R429	R-SMD,16.9K1%			

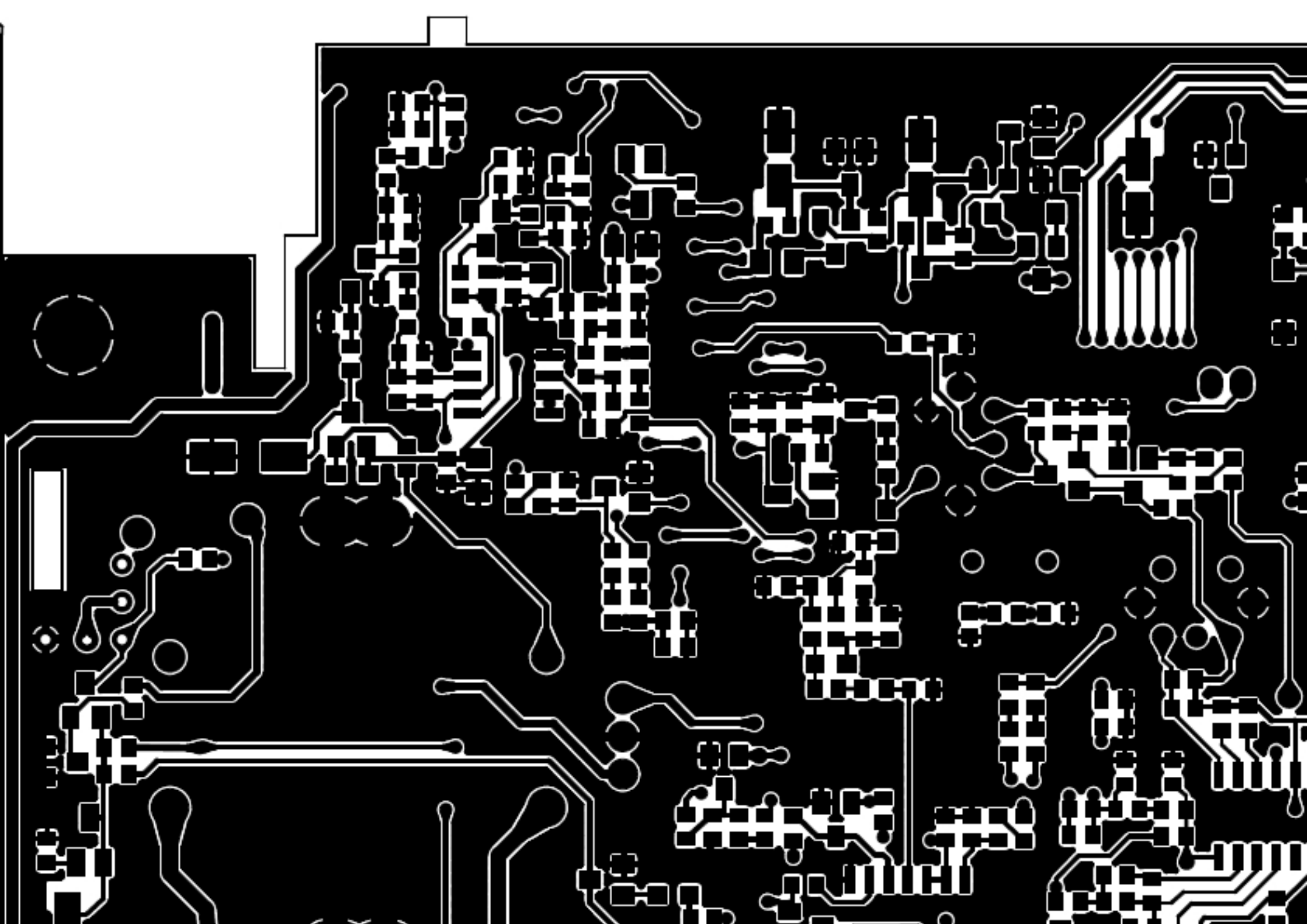
21	1	R420	R-SMD,22 KJ			
22	1	R405	R-SMD,220KJ			
23	1	R421	R-SMD,22J			
24	1	R426	R-SMD,22K1%			
25	1	MR1	BULK ,22KJ/AX		MIC ASSY	
26	1	R431	R-SMD,3.3KJ			
27	1	R414	R-SMD,4.7KJ			
28	4	R422-425	R-SMD,47KJ			
29	1	R401	BULK ,6.8KAX		VR ASSY	
30	1	R408	R-SMD,68KJ			
31	1	VR PCB	FR-4 (PRO-7H)		VR ASSY	
32	1	SW501	SW-6A,NON		MIC ASSY	
			-LOCK			
33	1	SW503	TACT-4P,DN		MIC ASSY	
34	1	SW502	TACT-4P,UP		MIC ASSY	
35	1	SW401	SW-ENCD,		VR ASSY	
			CH-UP/DOWN			
36	1	SW412	TACT,AM/FM//M2			
37	1	SW413	TACT,ASQ/FRQ			
38	1	SW403	TACT,BEEP/RB			
39						
40	1	SW409	TACT,CH9/M3			
41						
42	1	SW402	TACT,FC//SC			
43						
44						
45	1	SW406	TACT,SCH/SW			
46	1	SW407	TACT,TOT/M1			
47	1	SW408	TACT,TSQ			
49	1	MIC PCB	FR-4		MJ-300MIC-GR PCB	
50	1	FRONT PCB	FR-4		MJ-800FR-GR PCB	

51	1					
52	1	Q402	TR,KRA110S			
53	1	Q404	TR,KTA1504Y			
54	1	Q3	TR,KRC102S			
55	1	Q403	TR,KTC3875Y			
56	1	SQ401	VR-9PIE ,10KB		SQ VR, VR ASSY	
57	1	VR401	VR-9PIE ,50KA	W/SW	AF VR, VR ASSY	
58	1	X401	XTL-11X4.5,			
			8.0MCL20P			
-----						

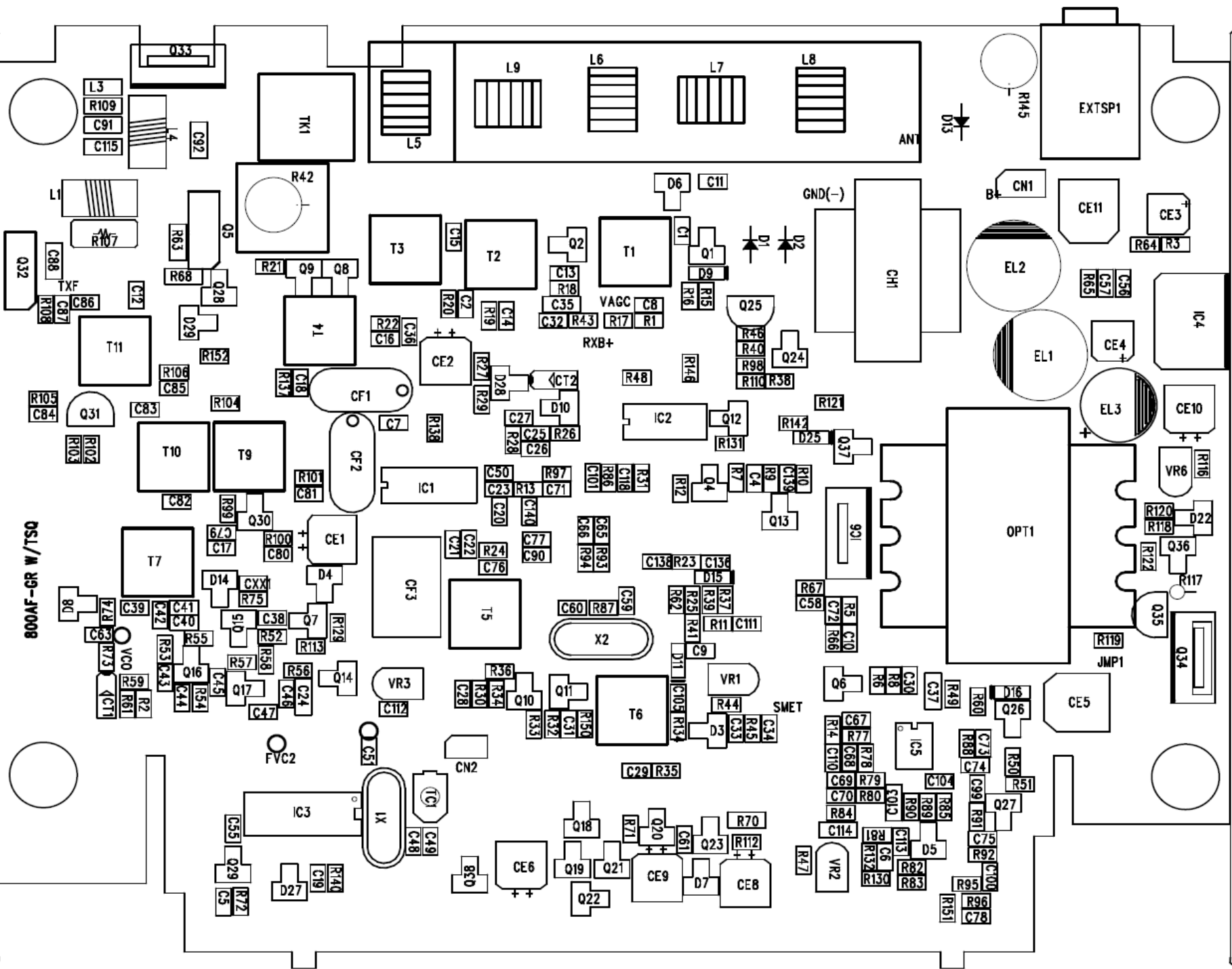








AE6690(MJ-800) MAIN AM/FM -TSQ-GR-V1.0



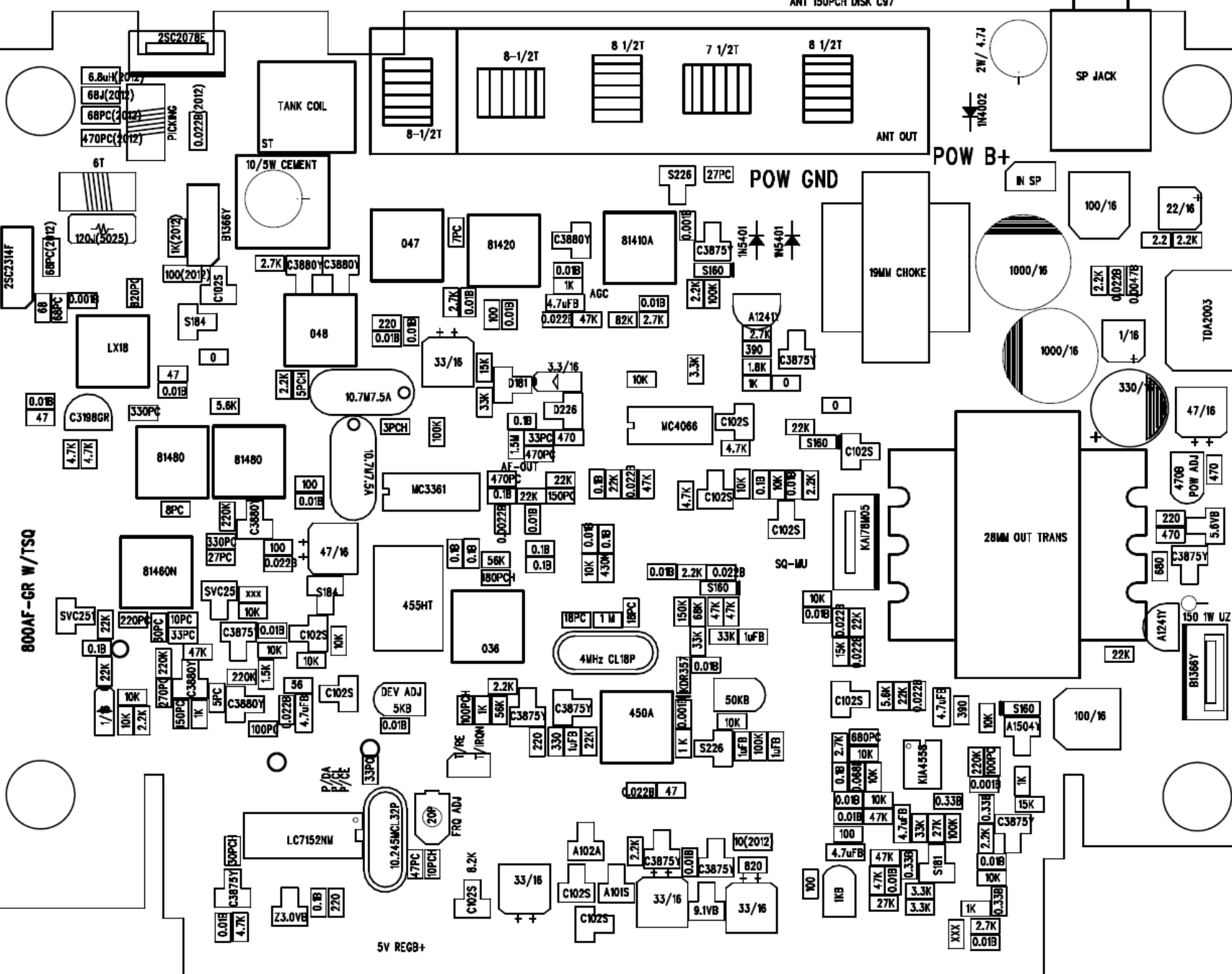
2007.05.31-GR

800AF-GR W/TSQ



2007.05.31.-GR

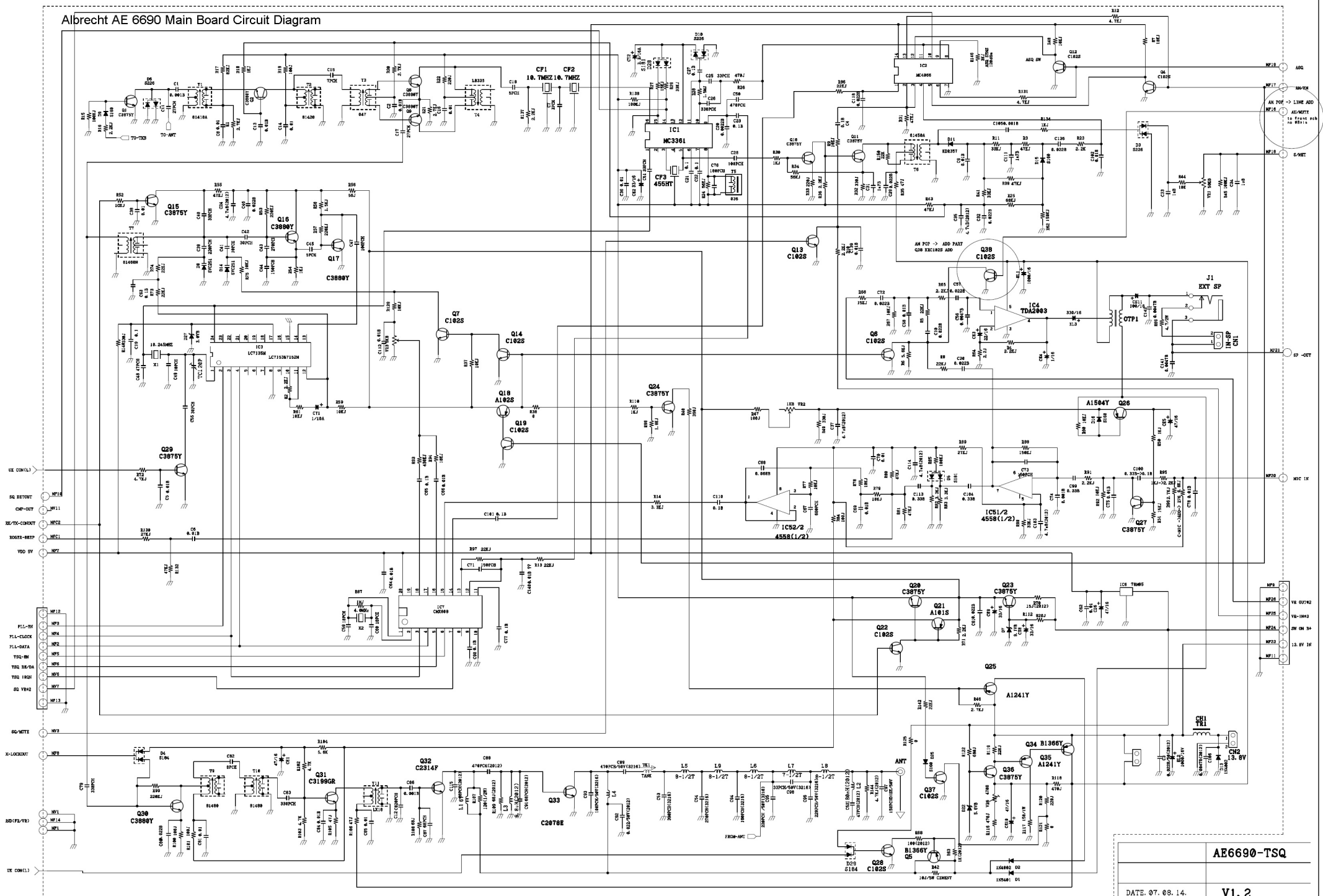
800AF-GR W/TSQ



AE6690

MAIN AM/FM - TSQ-GR-V1.0

# Albrecht AE 6690 Main Board Circuit Diagram



AE6690-TSQ

DATE: 07.08.14. V1.2



12	3	C19	C-SMD,0.1B			
		C21-22				
13	10	C4 C23	C-SMD,0.1B			
		C27 C63				
		C65 C77				
		C90 C101				
		C110 C136				
14	4	C99-100	C-SMD,0.33B			
		C104 C113				
15	2	C28 C47	C-SMD,100PCH			
16	1	C93	C-SMD,			
			100PCH/50V(321			
			6)			
17	1	C41	C-SMD,10PCH			
18	3	C44 C71	C-SMD,150PCH			
		C73				
19	1	C97	C-SMD,			
			150PCHDISK/50V		ANT CONNECTOR	
20	1	C76	C-SMD,180PCH			
21	1	C94	C-SMD,			
			180PCH(3216)			
22	3	C55	C-SMD,18PCH			
		C59-60				
23	2	C33-34	C-SMD,1uB			
24	2	C31 C111	C-SMD,1uB			
25	1	C39	C-SMD,220PCH			
26	1	C95	C-SMD,220PCH			
			/50V(3216)			
27	1	C96	C-SMD,			
			220PCH/50V(321			
			6)			
28	1	C43	C-SMD,270PCH			

29	1	C54	C-SMD,			
			270PCH/50V(3216)			
30	3	C11 C17	C-SMD,27PCH			
		C49				
31	1	C42	C-SMD,30PCH			
32	3	C26 C79	C-SMD,330PCH			
		C83				
33	3	C25 C40	C-SMD,33PCH			
		C51				
34	1	C98	C-SMD,			
			33PCH/50V(3216			
			)			
35	1	C53	C-SMD,			
			390PCH/50V(3216)			
36	1	C7	C-SMD,3PCH			
37	5	C24 C35	C-SMD,			
		C37 C103	4.7uB/12V(2012)			
		C114				
38	1	C50	C-SMD,470PCH			
39	1	C88	C-SMD,			
			470PCH(2012)			
40	1	C89	C-SMD,			
			470PCH/50V(321			
			6)			
41	1	C48	C-SMD,47PCH			
42	1	C52	C-SMD,			
			47PCH(2012)			
43	2	C18 C45	C-SMD,5PCH			
44	1	C67	C-SMD,680PCH			
45	1	C87	C-SMD,68PCH			
46	2	C91 C115	C-SMD,			
			68PCH(2012)			

47	1	C15	C-SMD,7PCH			
48	1	C82	C-SMD,8PCH			
49	1	C12	C-SMD,C820PCH			
50	2	CF1-2	CF-A,10.7MHZ		+-7.5KHz	
51	1	CF3	CF-A,455HT			
52	1	TK1	COIL,TANK			
53	1	CN2	POWER CORD		POW ASSY W/FUSE	
54	2	CN1	2.5PITCH,IN-SP		SP CONNECTOR ASSY 160mm	
55	1	CN4	2.0PITCH 2P		CONT CONNECTOR ASSY 70mm	
56	1	TC1	CV-SMD,20P			
57	2	D2 D13	BALK,1N4002			
58	1	D1	BALK,1N5401			
59	1	D11	D-,KDR357			
60	4	D9 D15-16	D-,KDS160			
		D25				
61	3	D3 D6 D10	D-,KDS226			
62	2	D5 D28	D-,KDS181			
63	2	D4 D29	D-,KDS184			
64	2	D8 D14	D-V,KDV251			
65	1	D27	ZENER,3.0VB			
66	1	D22	ZENER,5.6VB			
67	1	D7	ZENER,9.1VB			
68	1	CT1	TANTAL,1/16A			
69	1	CE4	E-A,1/16			
70	1	CE11	CE,100/16			
71	1	EL1	EL,1000/16V			
72	1	EL2	EL,1000/16V			
73	1	CE3	CE ,22/16			
74	1	CT2	TANTAL,3.3/16A			
75	3	CE2 CE8-9	CE,33/16			
76	1	EL3	EL,330/16			

77	4	CE1 CE5-6 CE,47/16			
		CE10			
78	1	IC6	TO-220A78M05	500mA	
79	2	IC5	IC5,KIA4558F		
80	1	IC2	IC14,MC4066		
81	1	IC3	LC7152M		
82	1	IC7	ICG20DS,CMX808		
83	1	IC1	WP ,MC3361		
84	1	T3	IFT,047		
85	1	T6	IFT,81450A		
86	1	T7	IFT,81460N		
87	1	T4	IFT,048		
88	1	T1	IFT6,81410A		
89	1	T2	IFT6,81420		
90	2	T9-10	IFT6,81480		
91	1	T11	IFT6,LX18		
92	1	T5	IFT-5,036		
93	1	SP	77PIE 3W 8OHM		
94	1	L4	PICKING COIL		
95	1	L2	CHIP INDECTOR		
			180nH(2012)		
96	1	L3	CHIP INDECTOR		
			6.8uH(2012)		
97	1	L1	SPRING ,6T		
98	1	L7	SPRING,7-1/2T		
99	4	L5-6 L8-9	SPRING,8-1/2T		
100	3	R38 R121	R-SMD,0J		
		R125			
101	1	R58	R-SMD,1.5KJ		
102	1	R28	R-SMD,1.5MJ		
103	1	R68	R-SMD,		
			100(2012)		

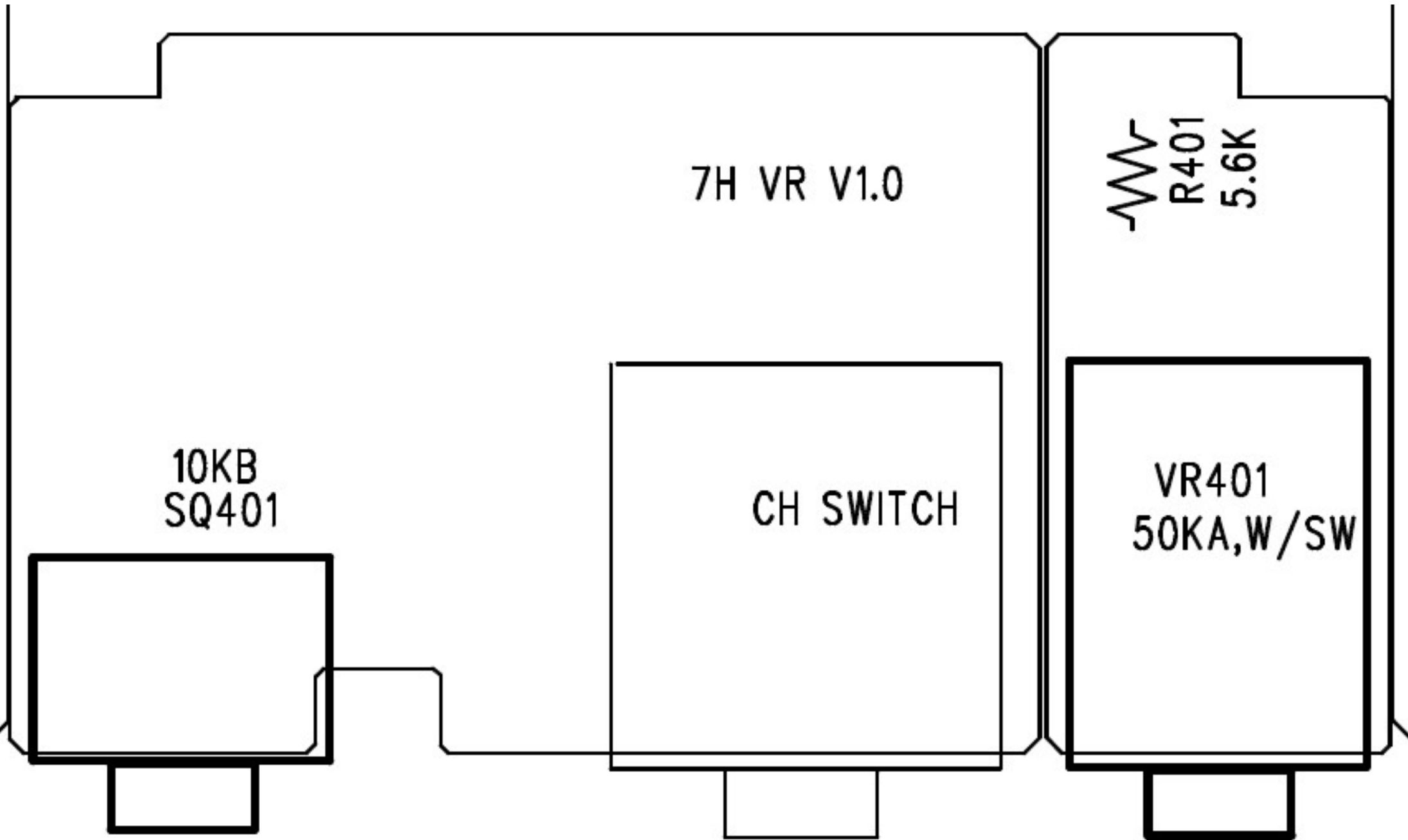
104	5	R19 R47	R-SMD,100J			
		R84				
		R100-101				
105	4	R15 R45	R-SMD,100KJ			
		R85 R138				
106	1	R42	CEMENT,10J/5W			
			CEMENT			
107	1	R44	R-SMD,10K			
108	16	R7 R9 R37	R-SMD,10KJ			
		R48				
		R59-61				
		R66-67				
		R75				
		R77-79				
		R92 R94				
		R129				
109	1	R107	R-SMD,			
			120J(5025)			
110	1	R117	BALK ,150/1W			
111	2	R62 R88	R-SMD,150KJ			
112	1	R70	R-SMD,			
			15J(2012)			
113	3	R27 R51	R-SMD,15KJ			
		R147				
114	1	R63	R-SMD,1KJ(2012)			
115	6	R18 R30	R-SMD,1KJ			
		R50 R54				
		R95 R134				
116	1	R87	R-SMD,1MJ			
117	1	R52	R-SMD,10KJ			
118	1	R64	R-SMD,2.2J			



119	1	R23	R-SMD,2.2KJ			
120	9	R2 R4 R10	R-SMD,2.2KJ			
		R16 R36				
		R65 R71				
		R91 R137				
121	5	R1 R20-21	R-SMD,2.7KJ			
		R46 R96				
122	3	R22 R33	R-SMD,220J			
		R120				
123	3	R53 R57	R-SMD,220KJ			
		R99				
124	1	R150	R-SMD,22KJ			
125	9	R5 R8 R13	R-SMD,22KJ			
		R73-74				
		R86 R97				
		R119 R142				
126	2	R89 R130	R-SMD,27KJ			
127	3	R14	R-SMD,3.3KJ			
		R82-83				
128	3	R32 R49	R-SMD,330J			
		R140				
129	4	R11 R29	R-SMD,33KJ			
		R41 R90				
130	2	R40 R118	R-SMD,390J			
131	1	R146	R-SMD,3KJ			
132	1	R69	BALK ,4.7/2W			
133	2	R102-103	R-SMD,4.7KJ			
134	3	R12 R72	R-SMD,4.7KJ			
		R131				
135	1	R144	R-SMD,			
			4.7KJ(2012)			
136	1	R93	R-SMD,430KJ			

137	2	R26 R116	R-SMD,470J			
138	3	R35	R-SMD,47J			
		R105-106				
139	8	R3 R31	R-SMD,47KJ			
		R39 R43				
		R55				
		R80-81				
		R132				
140	1	R104	R-SMD,5.6KJ			
141	1	R6	R-SMD,5.6KJ			
142	1	R56	R-SMD,56J			
143	2	R24 R34	R-SMD,56KJ			
144	1	R76	R-SMD,6.8KJ			
145	1	R122	R-SMD,680J			
146	1	R108	R-SMD,68J			
147	1	R109	R-SMD,			
			68J(2012)			
148	1	R25	R-SMD,68KJ			
149	1	R112	R-SMD,820J			
150	1	R17	R-SMD,82KJ			
151	1	Q21	TR-,KRA101S			
152	1	Q18	TR-,KRA102S			
153	2	Q25 Q35	TR-,KTA1241Y			
154	1	Q26	TTR,KTA1504Y			
155	2	Q5 Q34	T-220AB,B1366Y			
156	12	Q3-4 Q6-7	TR,KRC102S			
		Q12-14				
		Q19 Q22				
		Q24 Q28				
		Q37				
157	1	Q33	T-220,2SC2078E			
158	1	Q32	T-,2SC2314F			

159	1	Q31	TR,			
			KTC3199GR			
160	9	Q1 Q10-11	T-220AB,C3875Y			
		Q15 Q20				
		Q23 Q27				
		Q29 Q36				
161	6	Q2 Q8-9	TR,KTC3880Y			
		Q16-17				
		Q30				
162	1	IC4	TDA2003,			
163	1	MAIN PCB	FR-4		MJ-800MA-GR	
164	1	OTP1	TRANS			
165	1	CH1	TRANS2,TR1			
166	1	VR6	SEMI 3P,470B			
167	1	VR2	SEMI 3P,1KB			
168	1	VR1	SEMI 3P,50KB			
169	1	VR3	SEMI 3P,5KB			
170	1	X1	XTL-11X4.5,			
			10.245MHZ	8PPM		
171	1	X2	XTL-11X4.5,			
			4.0MHz	20PPM		
-----						



7H VR V1.0

