

SERVICE MANUAL

CRT G.SATURNE

(H)

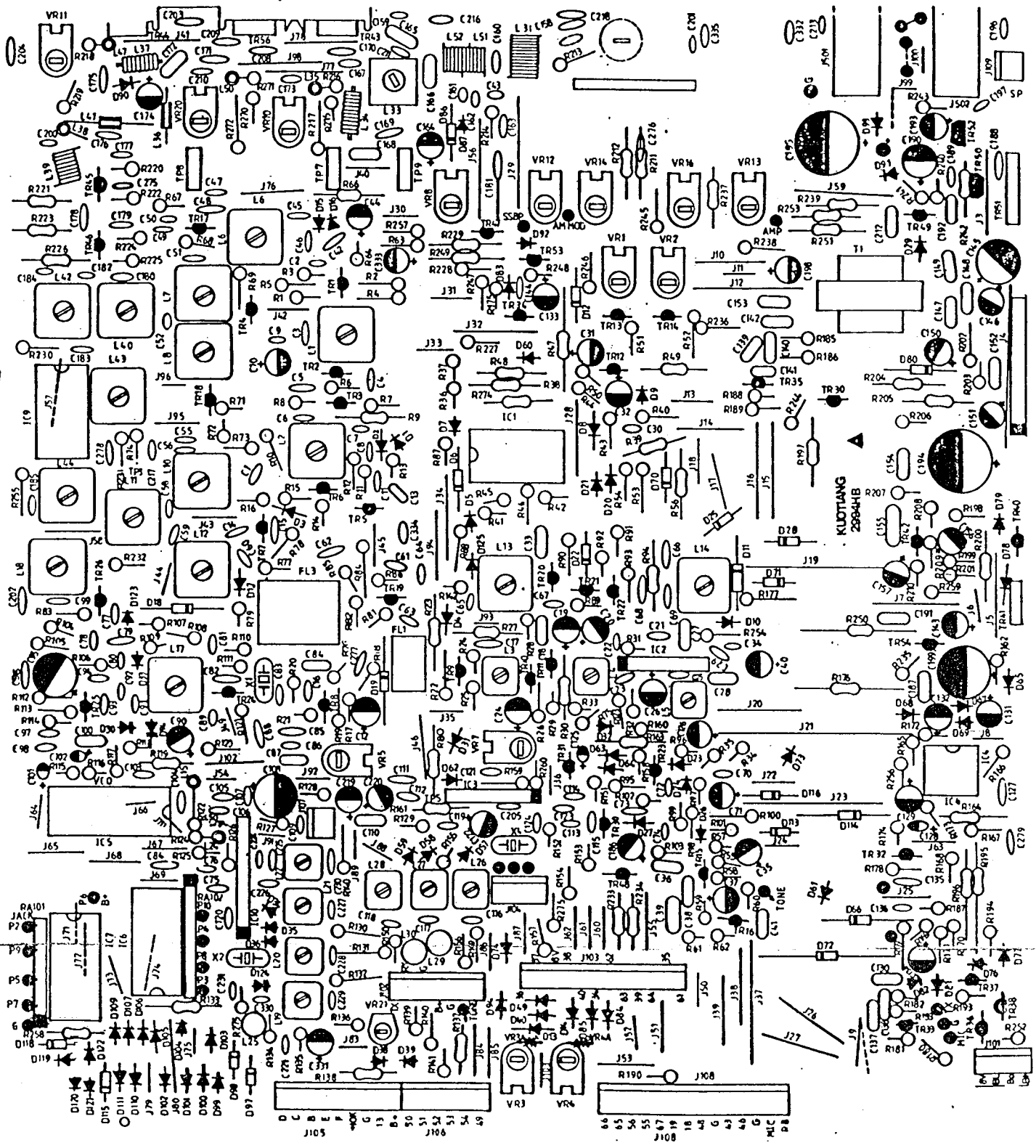
CHANNEL INFORMATION

Chan nel	ANT FREQUENCY (MHz)											
	A BAND		B BAND		C BAND		D BAND		E BAND		F BAND	
	Nor mal	+10 KHz	Nor mal	+10 KHz	Nor mal	+10 KHz	Nor mal	+10 KHz	Nor mal	+10 KHz	Nor mal	+10 KHz
1	26.065	26.075	26.515	26.525	26.965	26.975	27.415	27.425	27.865	27.875	28.315	28.325
2	26.075	26.085	26.525	26.535	26.975	26.985	27.425	27.435	27.875	27.885	28.325	28.335
3	26.085	26.095	26.535	26.545	26.985	26.995	27.435	27.445	27.885	27.895	28.335	28.355
		(3A)		(3A)		(3A)		(3A)		(3A)	(3A)	(3A)
4	26.105	26.115	26.555	26.565	27.005	27.015	27.455	27.465	27.905	27.915	28.355	28.365
5	26.115	26.125	26.565	26.575	27.015	27.025	27.465	27.475	27.915	27.925	28.365	28.375
6	26.125	26.135	26.575	26.585	27.025	27.035	27.475	27.485	27.925	27.935	28.375	28.385
7	26.135	26.145	26.585	26.595	27.035	27.045	27.485	27.495	27.935	27.945	28.385	28.405
		(7A)		(7A)		(7A)		(7A)		(7A)	(7A)	(7A)
8	26.155	26.165	26.605	26.615	27.055	27.065	27.505	27.515	27.955	27.965	28.405	28.415
9	26.165	26.175	26.615	26.625	27.065	27.075	27.515	27.525	27.965	27.975	28.415	28.425
10	26.175	26.185	26.625	26.635	27.075	27.085	27.525	27.535	27.975	27.985	28.425	28.435
11	26.185	26.195	26.635	26.645	27.085	27.095	27.535	27.545	27.985	27.995	28.435	28.455
		(11A)		(11A)		(11A)		(11A)		(11A)	(11A)	(11A)
12	26.205	26.215	26.655	26.665	27.105	27.115	27.555	27.565	28.005	28.015	28.455	28.465
13	26.215	26.225	26.665	26.675	27.115	27.125	27.565	27.575	28.015	28.025	28.465	28.475
14	26.225	26.235	26.675	26.685	27.125	27.135	27.575	27.585	28.025	28.035	28.475	28.485
15	26.235	26.245	26.685	26.695	27.135	27.145	27.585	27.595	28.035	28.045	28.485	28.505
		(15A)		(15A)		(15A)		(15A)		(15A)	(15A)	(15A)
16	26.255	26.265	26.705	26.715	27.155	27.165	27.605	27.615	28.055	28.065	28.505	28.515
17	26.265	26.275	26.715	26.725	27.165	27.175	27.615	27.625	28.065	28.075	28.515	28.525
18	26.275	26.285	26.725	26.735	27.175	27.185	27.625	27.635	28.075	28.085	28.525	28.535
19	26.285	26.295	26.735	26.745	27.185	27.195	27.635	27.645	28.085	28.095	28.535	28.555
		(19A)		(19A)		(19A)		(19A)		(19A)	(19A)	(19A)
20	26.305	26.315	26.755	26.765	27.205	27.215	27.655	27.665	28.105	28.115	28.555	28.565
21	26.315	26.325	26.765	26.775	27.215	27.225	27.665	27.675	28.115	28.125	28.565	28.575
22	26.325	26.335	26.775	26.785	27.225	27.235	27.675	27.685	28.125	28.135	28.575	28.605
23	26.355	26.365	26.805	26.815	27.255	27.265	27.705	27.715	28.155	28.165	28.605	28.585
24	26.335	26.345	26.785	26.795	27.235	27.245	27.685	27.695	28.135	28.145	28.585	28.595
25	26.345	26.355	26.795	26.805	27.245	27.255	27.695	27.705	28.145	28.155	28.595	28.615
26	26.365	26.375	26.815	26.825	27.265	27.275	27.715	27.725	28.165	28.175	28.615	28.625
27	26.375	26.385	26.825	26.835	27.275	27.285	27.725	27.735	28.175	28.185	28.625	28.635
28	26.385	26.395	26.835	26.845	27.285	27.295	27.735	27.745	28.185	28.195	28.635	28.645
29	26.395	26.405	26.845	26.855	27.295	27.305	27.745	27.755	28.195	28.205	28.645	28.655
30	26.405	26.415	26.855	26.865	27.305	27.315	27.755	27.765	28.205	28.215	28.655	28.665
31	26.415	26.425	26.865	26.875	27.315	27.325	27.765	27.775	28.215	28.225	28.665	28.675
32	26.425	26.435	26.875	26.885	27.325	27.335	27.775	27.785	28.225	28.235	28.675	28.685
33	26.435	26.445	26.885	26.895	27.335	27.345	27.785	27.795	28.235	28.245	28.685	28.695
34	26.445	26.455	26.895	26.905	27.345	27.355	27.795	27.805	28.245	28.255	28.695	28.705
35	26.455	26.465	26.905	26.915	27.355	27.365	27.805	27.815	28.255	28.265	28.705	28.715
36	26.465	26.475	26.915	26.925	27.365	27.375	27.815	27.825	28.265	28.275	28.715	28.725
37	26.475	26.485	26.925	26.935	27.375	27.385	27.825	27.835	28.275	28.285	28.725	28.735
38	26.485	26.495	26.935	26.945	27.385	27.395	27.835	27.845	28.285	28.295	28.735	28.745
39	26.495	26.505	26.945	26.955	27.395	27.405	27.845	27.855	28.295	28.305	28.745	28.755
40	26.505	26.515	26.955	26.965	27.405	27.415	27.855	27.865	28.305	28.315	28.755	28.765

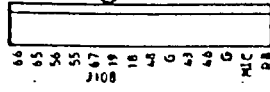
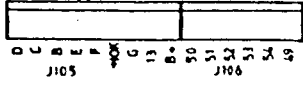
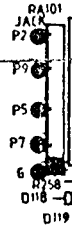
(L)

CHANNEL INFORMATION

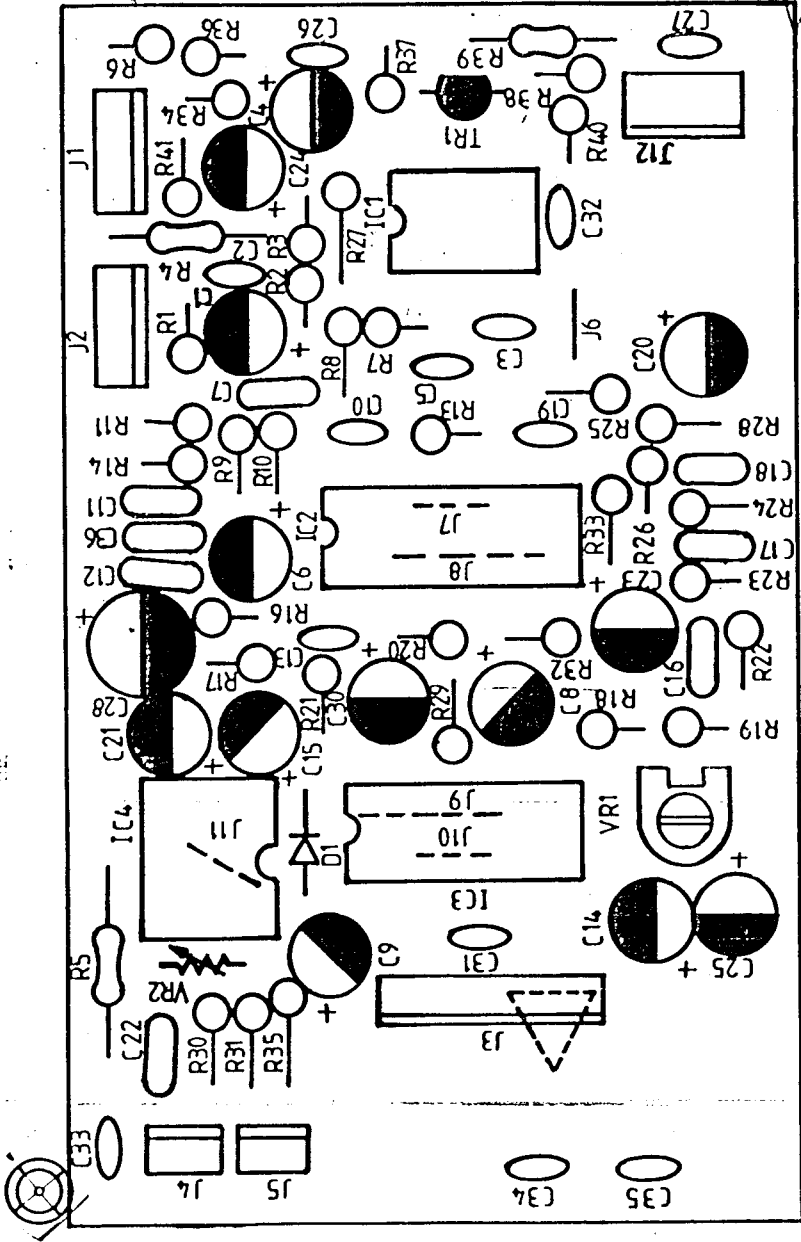
Chan nel	ANT FREQUENCY (MHz)											
	A BAND		B BAND		C BAND		D BAND		E BAND		F BAND	
	Nor mal	+10 KHz	Nor mal	+10 KHz	Nor mal	+10 KHz	Nor mal	+10 KHz	Nor mal	+10 KHz	Nor mal	+10 KHz
1	25.615	25.625	26.065	26.075	26.515	26.525	26.965	26.975	27.415	27.425	27.865	27.875
2	25.625	25.635	26.075	26.085	26.525	26.535	26.975	26.985	27.425	27.435	27.875	27.885
3	25.635	25.645	26.085	26.095	26.535	26.545	26.985	26.995	27.435	27.445	27.885	27.895
4	25.655	25.665	26.105	26.115	26.555	26.565	27.005	27.015	27.455	27.465	27.905	27.915
5	25.665	25.675	26.115	26.125	26.565	26.575	27.015	27.025	27.465	27.475	27.915	27.925
6	25.675	25.685	26.125	26.135	26.575	26.585	27.025	27.035	27.475	27.485	27.925	27.935
7	25.685	25.695	26.135	26.145	26.585	26.595	27.035	27.045	27.485	27.495	27.935	27.945
8	25.705	25.715	26.155	26.165	26.605	26.615	27.055	27.065	27.505	27.515	27.955	27.965
9	25.715	25.725	26.165	26.175	26.615	26.625	27.065	27.075	27.515	27.525	27.965	27.975
10	25.725	25.735	26.175	26.185	26.625	26.635	27.075	27.085	27.525	27.535	27.975	27.985
11	25.735	25.745	26.185	26.195	26.635	26.645	27.085	27.095	27.535	27.545	27.985	27.995
12	25.755	25.765	26.205	26.215	26.655	26.665	27.105	27.115	27.555	27.565	28.005	28.015
13	25.765	25.775	26.215	26.225	26.665	26.675	27.115	27.125	27.565	27.575	28.015	28.025
14	25.775	25.785	26.225	26.235	26.675	26.685	27.125	27.135	27.575	27.585	28.025	28.035
15	25.785	25.795	26.235	26.245	26.685	26.695	27.135	27.145	27.585	27.595	28.035	28.045
16	25.805	25.815	26.255	26.265	26.705	26.715	27.155	27.165	27.605	27.615	28.055	28.065
17	25.815	25.825	26.265	26.275	26.715	26.725	27.165	27.175	27.615	27.625	28.065	28.075
18	25.825	25.835	26.275	26.285	26.725	26.735	27.175	27.185	27.625	27.635	28.075	28.085
19	25.835	25.845	26.285	26.295	26.735	26.745	27.185	27.195	27.635	27.645	28.085	28.095
20	25.855	25.865	26.305	26.315	26.755	26.765	27.205	27.215	27.655	27.665	28.105	28.115
21	25.865	25.875	26.315	26.325	26.765	26.775	27.215	27.225	27.665	27.675	28.115	28.125
22	25.875	25.885	26.325	26.335	26.775	26.785	27.225	27.235	27.675	27.685	28.125	28.135
23	25.905	25.915	26.355	26.365	26.805	26.815	27.255	27.265	27.705	27.715	28.155	28.165
24	25.885	25.895	26.335	26.345	26.785	26.795	27.235	27.245	27.685	27.695	28.135	28.145
25	25.895	25.905	26.345	26.355	26.795	26.805	27.245	27.255	27.695	27.705	28.145	28.155
26	25.915	25.925	26.365	26.375	26.815	26.825	27.265	27.275	27.715	27.725	28.165	28.175
27	25.925	25.935	26.375	26.385	26.825	26.835	27.275	27.285	27.725	27.735	28.175	28.185
28	25.935	25.945	26.385	26.395	26.835	26.845	27.285	27.295	27.735	27.745	28.185	28.195
29	25.945	25.955	26.395	26.405	26.845	26.855	27.295	27.305	27.745	27.755	28.195	28.205
30	25.955	25.965	26.405	26.415	26.855	26.865	27.305	27.315	27.755	27.765	28.205	28.215
31	25.965	25.975	26.415	26.425	26.865	26.875	27.315	27.325	27.765	27.775	28.215	28.225
32	25.975	25.985	26.425	26.435	26.875	26.885	27.325	27.335	27.775	27.785	28.225	28.235
33	25.985	25.995	26.435	26.445	26.885	26.895	27.335	27.345	27.785	27.795	28.235	28.245
34	25.995	26.005	26.445	26.455	26.895	26.905	27.345	27.355	27.795	27.805	28.245	28.255
35	26.005	26.015	26.455	26.465	26.905	26.915	27.355	27.365	27.805	27.815	28.255	28.265
36	36.015	26.025	26.465	26.475	26.915	26.925	27.365	27.375	27.815	27.825	28.265	28.275
37	26.025	26.035	26.475	26.485	26.925	26.935	27.375	27.385	27.825	27.835	28.275	28.285
38	26.035	26.045	26.485	26.495	26.935	26.945	27.385	27.395	27.835	27.845	28.285	28.295
39	26.045	26.055	26.495	26.505	26.945	26.955	27.395	27.405	27.845	27.855	28.295	28.305
40	26.055	26.065	26.505	26.515	26.955	26.965	27.405	27.415	27.855	27.865	28.305	28.315



KLUOTIANG
2994HB



4. DWG. NO: EPTOSSB50B E=1.2°
 DATE: 78.8.18
 5. HOLE SIZE: A=15X4°-3
 翻图: 吕淑贞

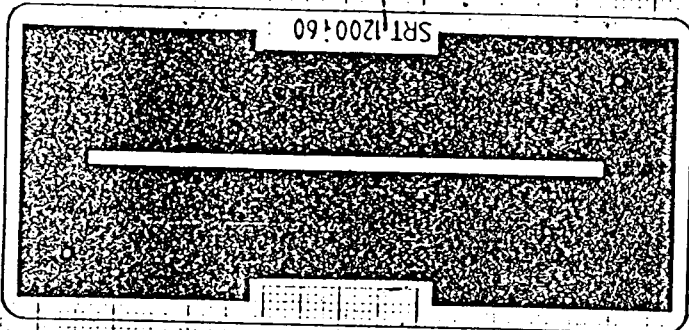


NOTES
 1 S=2:1
 2 MODEL: GALAXY PLUS
 3 TITLE: ECHO PCB
 4 DWG NO: EPTOSSB50B
 DATE: 78.9.7
 DRAWER: 吕淑贞

SRT-1206

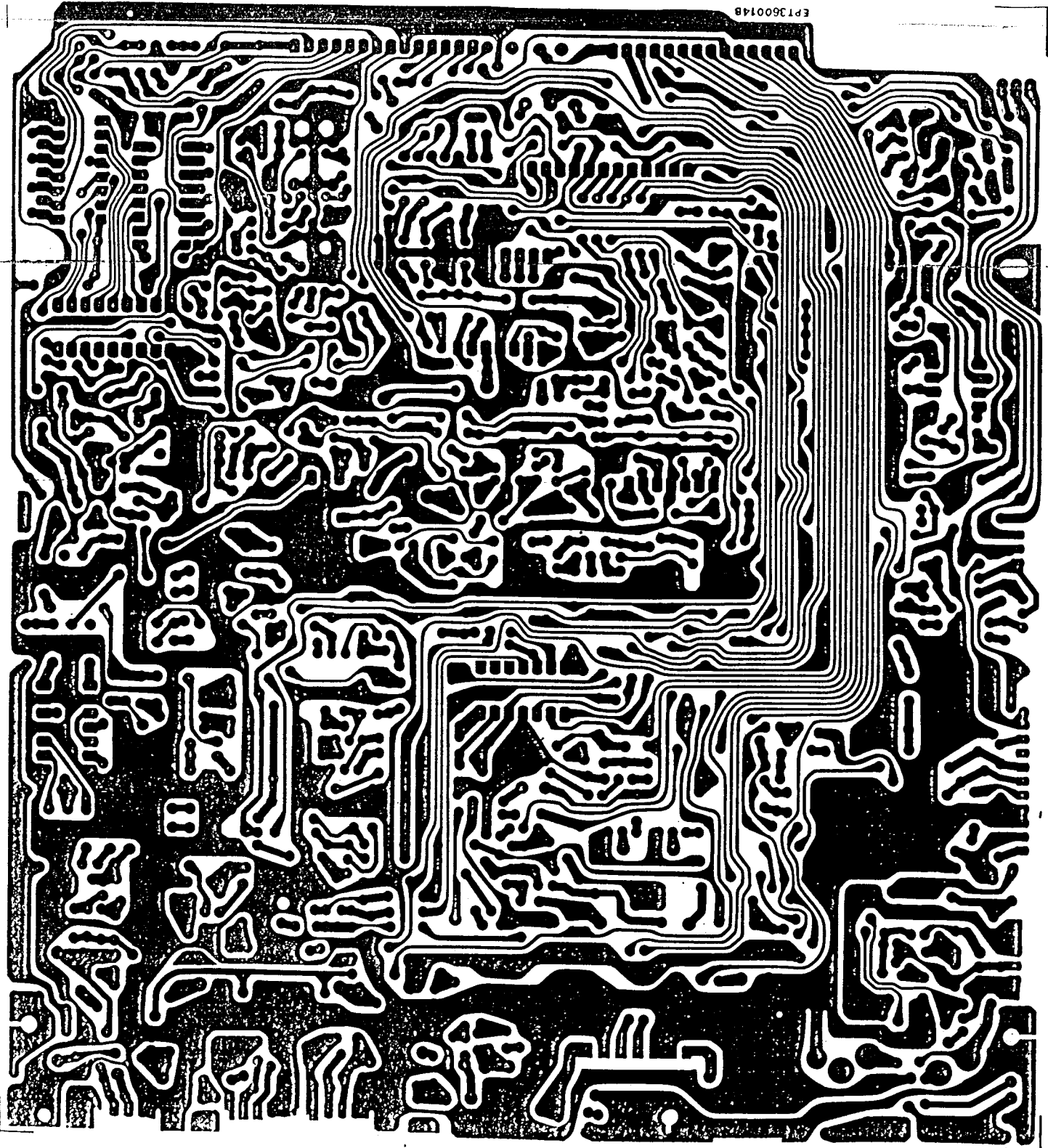
2:1

SRT 1200:60



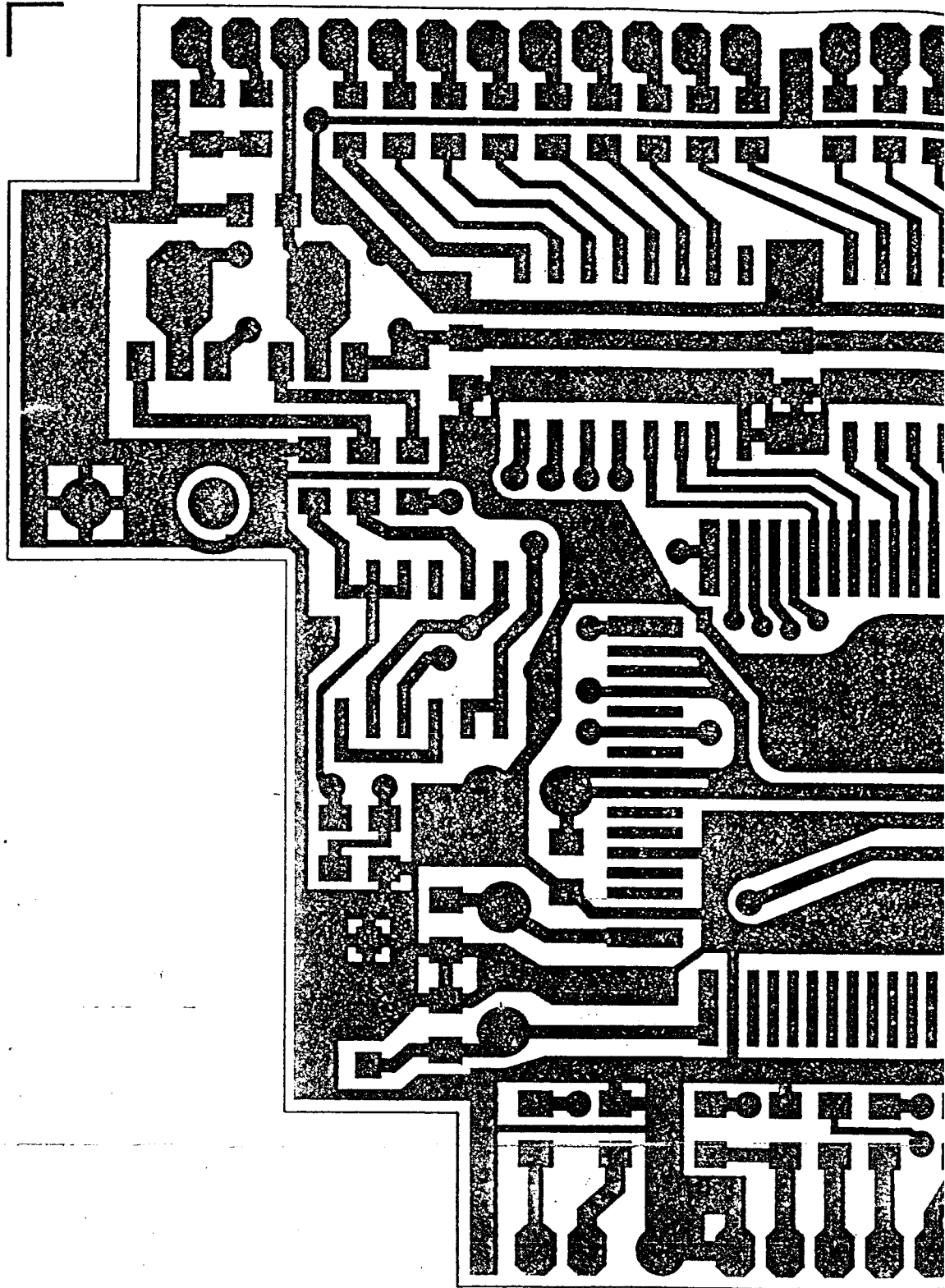
Handwritten marks or scribbles on the left side of the grid.

EP1360014B



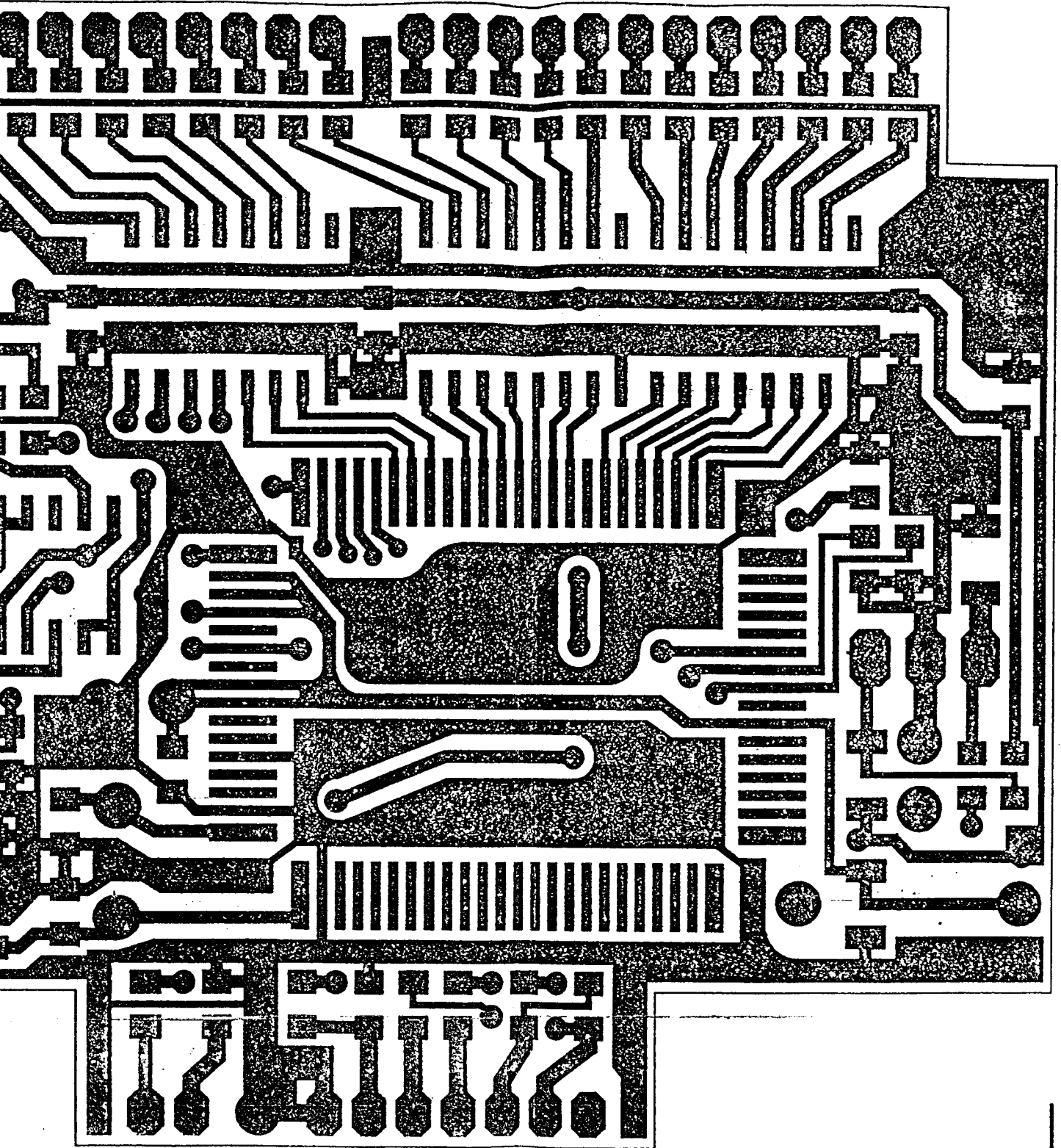
1A

1B



1B

1C



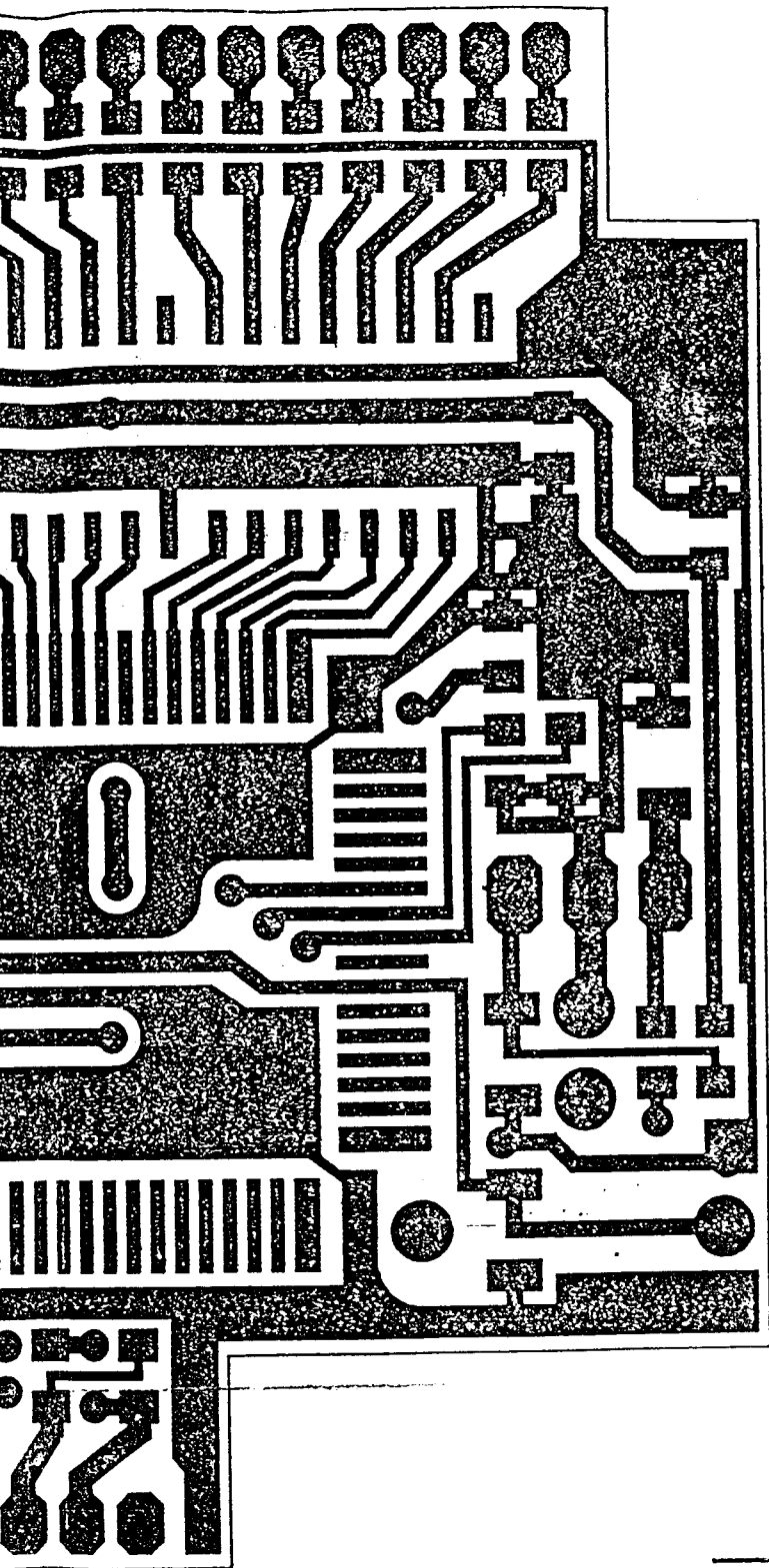
- NO
- 1: SC
- 2: MD
- 3: TI
- 4: DV
- 5: MA
- 6: HC

7: DR

此面为如

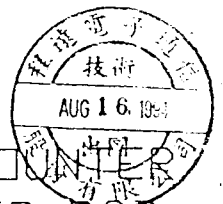
1C

1D



NOTES

- 1: SCALE: 4:1
- 2: MODEL: NEW COUNTER
- 3: TITLE: COUNTER PCB
- 4: DWG NO: EPT210011C
- 5: MATERIAL: F.G 1.6 mm
- 6: HOLE: A=1.5 ϕ B=1.0 ϕ
C=0.8 ϕ ØHTER 0.5 ϕ
- 7: DRAWING: RAY.10.1994

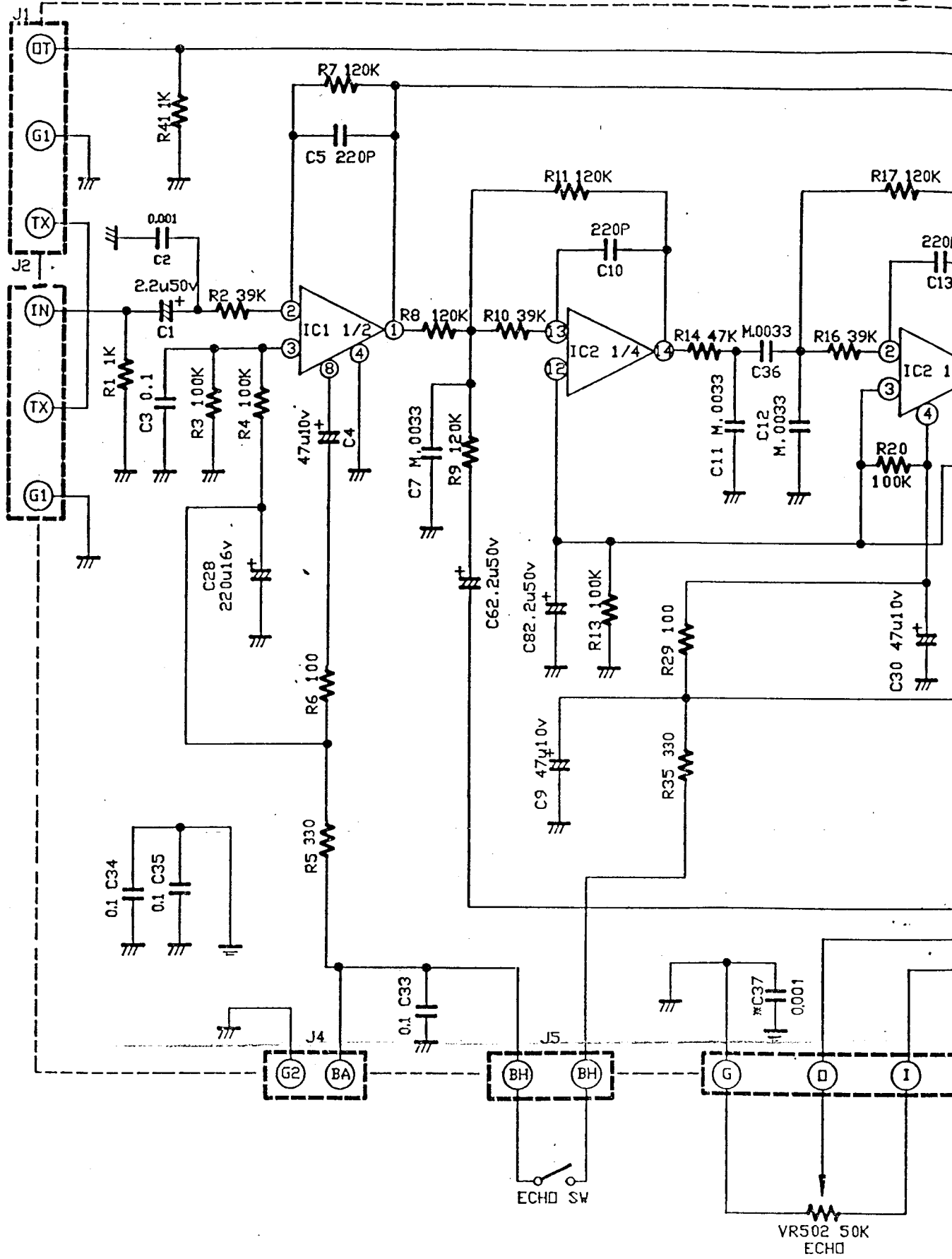


此面为铜箔面铜箔图
(正版)

J.F.WEI

2A

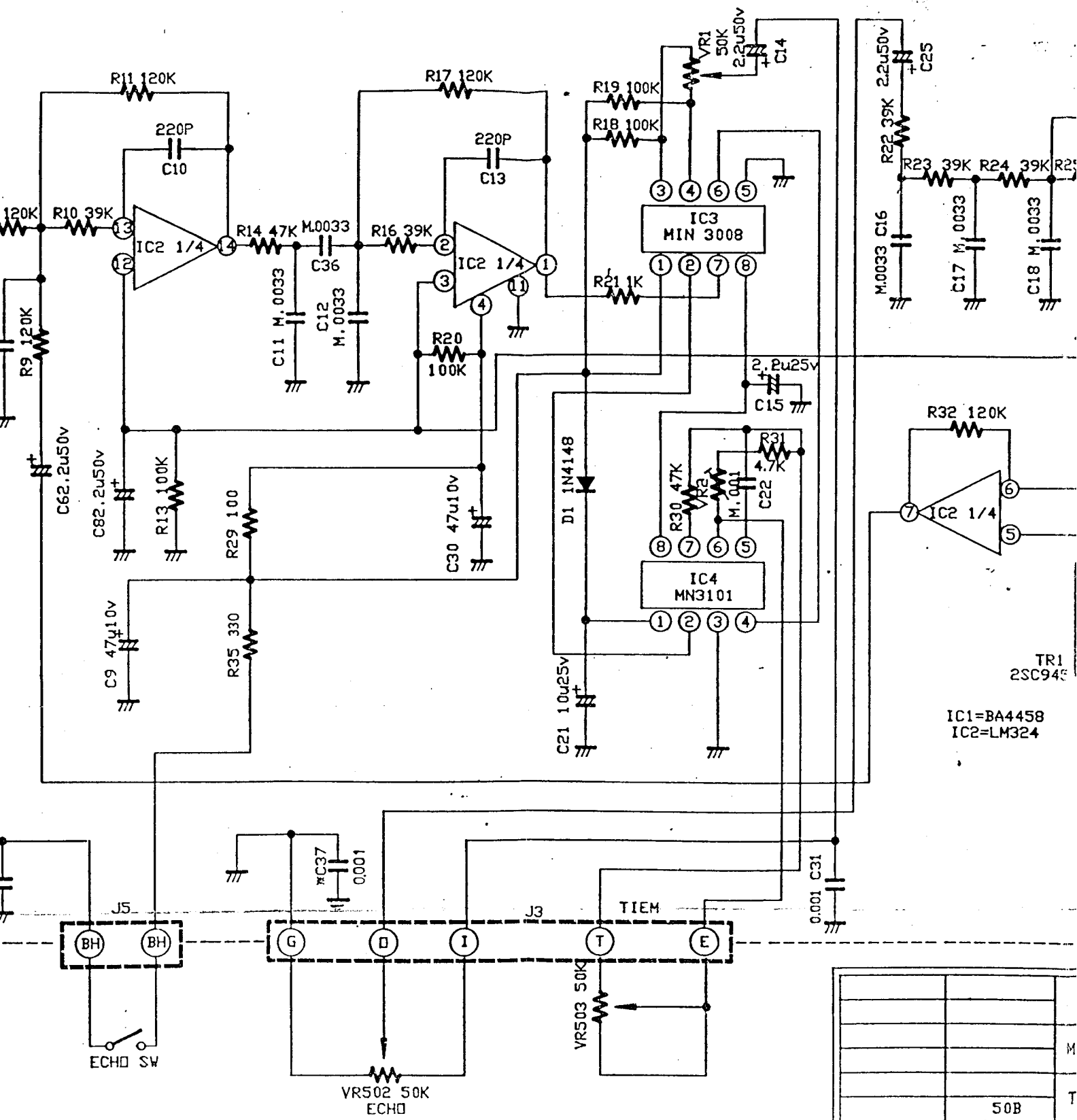
2B



3	R5 100
2	R35 100
1	R34 1K
	CHANC

20

2C

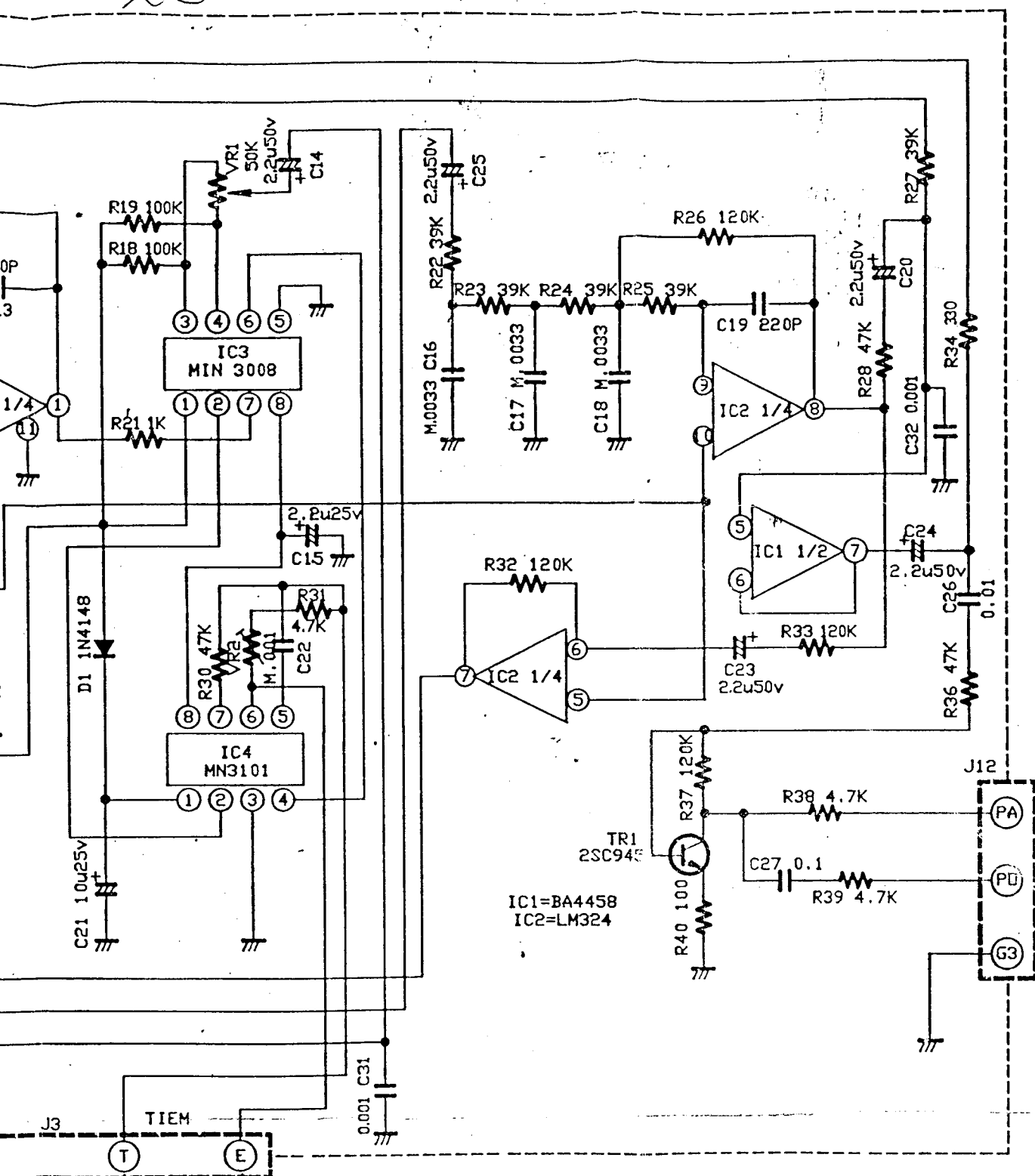


3	R5	100	330	"	"
2	R35	100	330	"	"
1	R34	1K	330	79,10.5	2657
	CHANGE ITEM			DATE	REMARK

APPROVED	CHECKED

2C

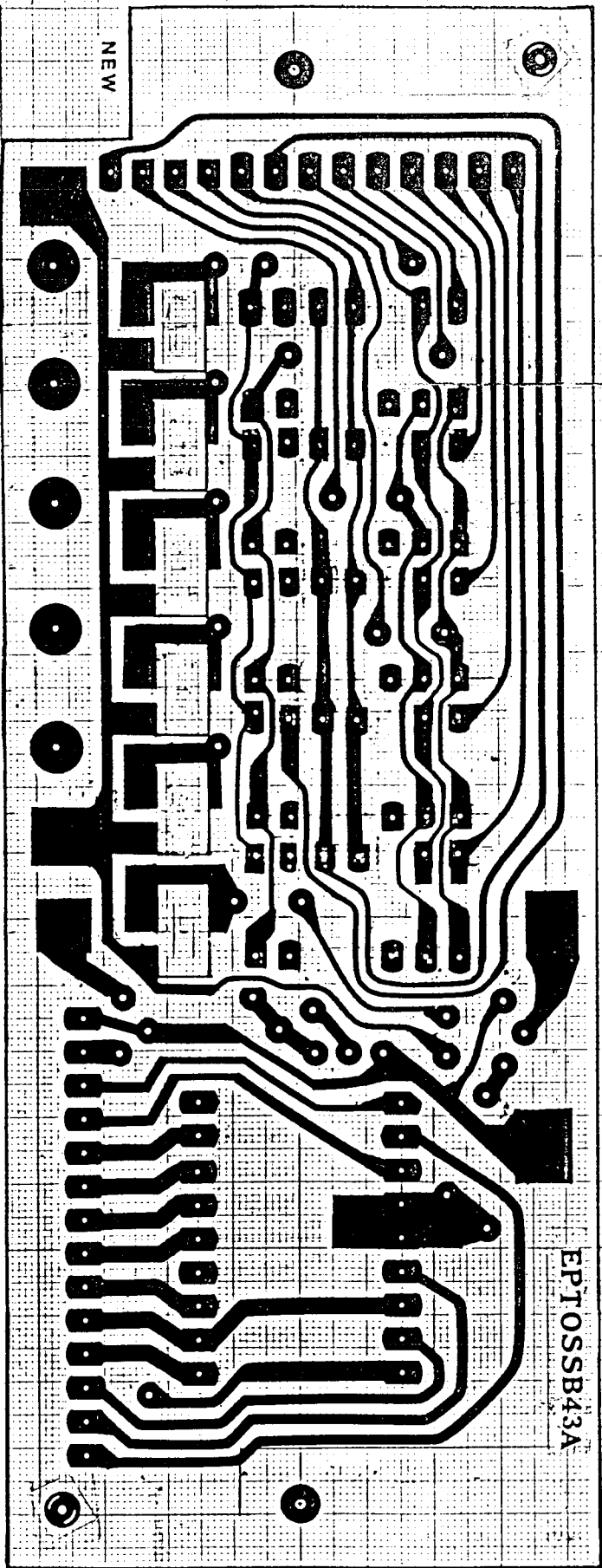
2D



00	-	330		
00	-	330		
K	-	330	79,10.5	2657
CHANGE	ITEM	DATE	REMARK	

		MODEL	ECHO		
		TITLE	SCHEMATIC DIAGRAM		
	50B				
APPROVED	CHECKED	DRAWER	L.S.J	79 6 22	ITEM NO 89SH

E5



NOTE:

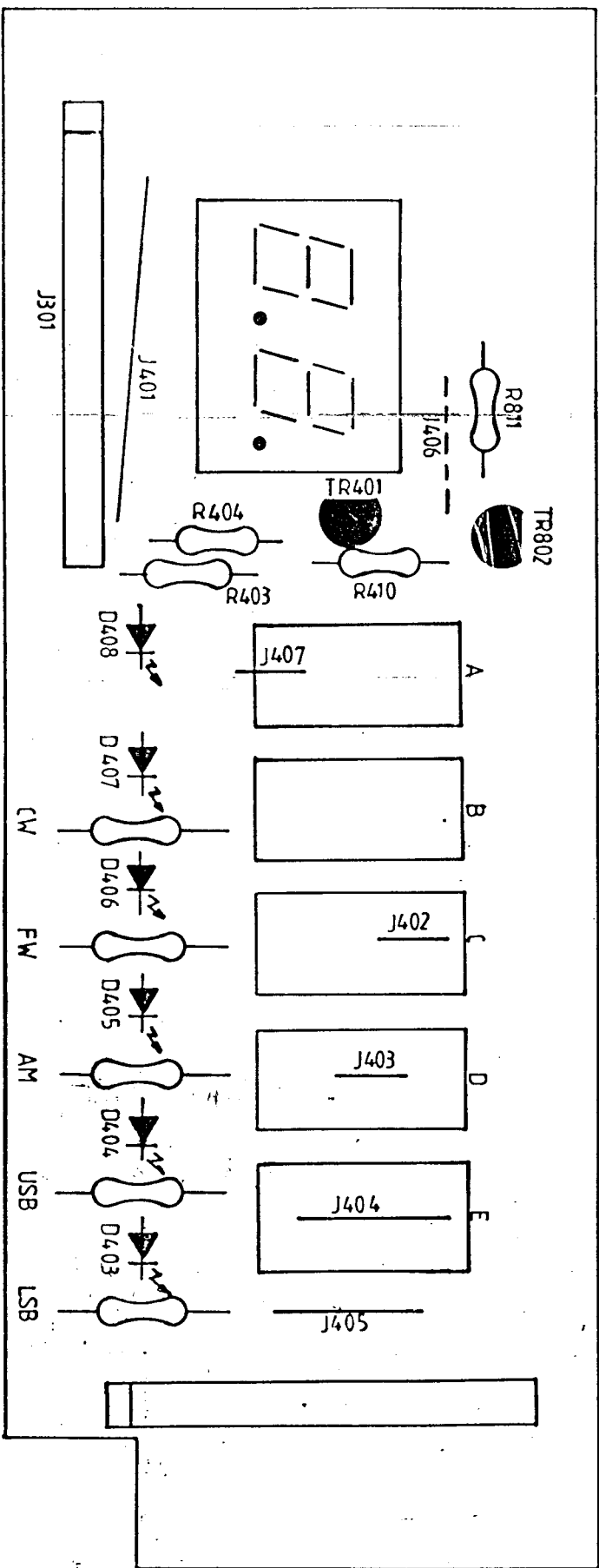
1. 板种 = GALAXY SATURN
2. 图号 = COUNTER PCB
3. 图号 = EPTOSSB43A

4. S = 2:1
5. 孔径:

A = 3.2 - 2
B = 1.2 - 1.2
C = 1

孔径 0.8

图号: 93.3.26



NOTES:

L.S.: 2:1

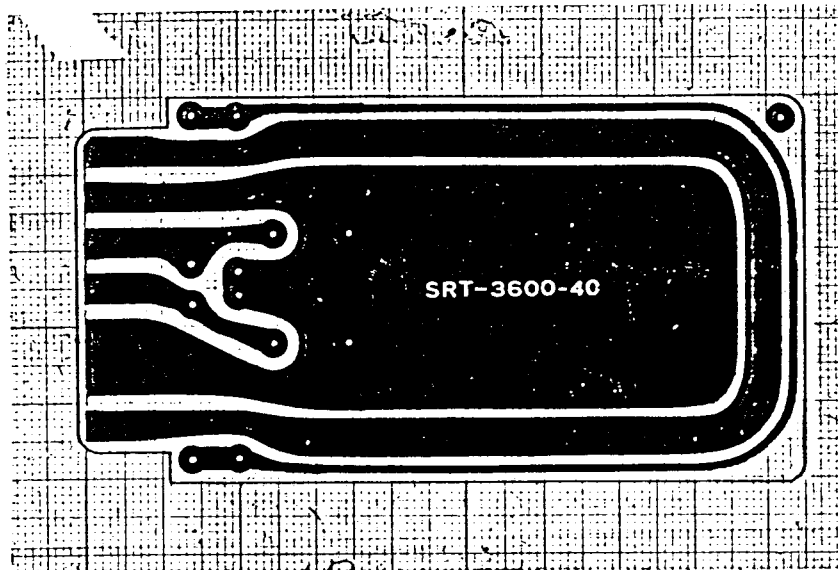
2 机种: GALAXY SATURN

1. 图名: COUNTER P.C.B

4 图号: ZPT055B4A

制图: 洪其利

99.5.24



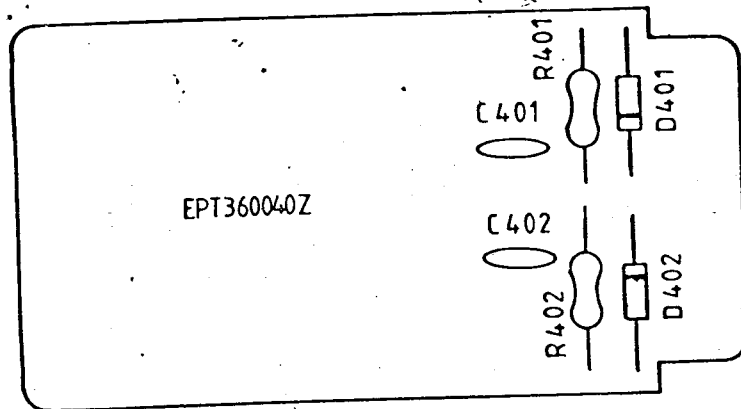
圖名: SWR

NOTE:

1. S: 2:1
2. 機種: SRC-3600
3. 圖號: SRC-3600-40
4. 孔徑: 0.8φ

製圖: 呂佩玲
公司: 程遠

SWR



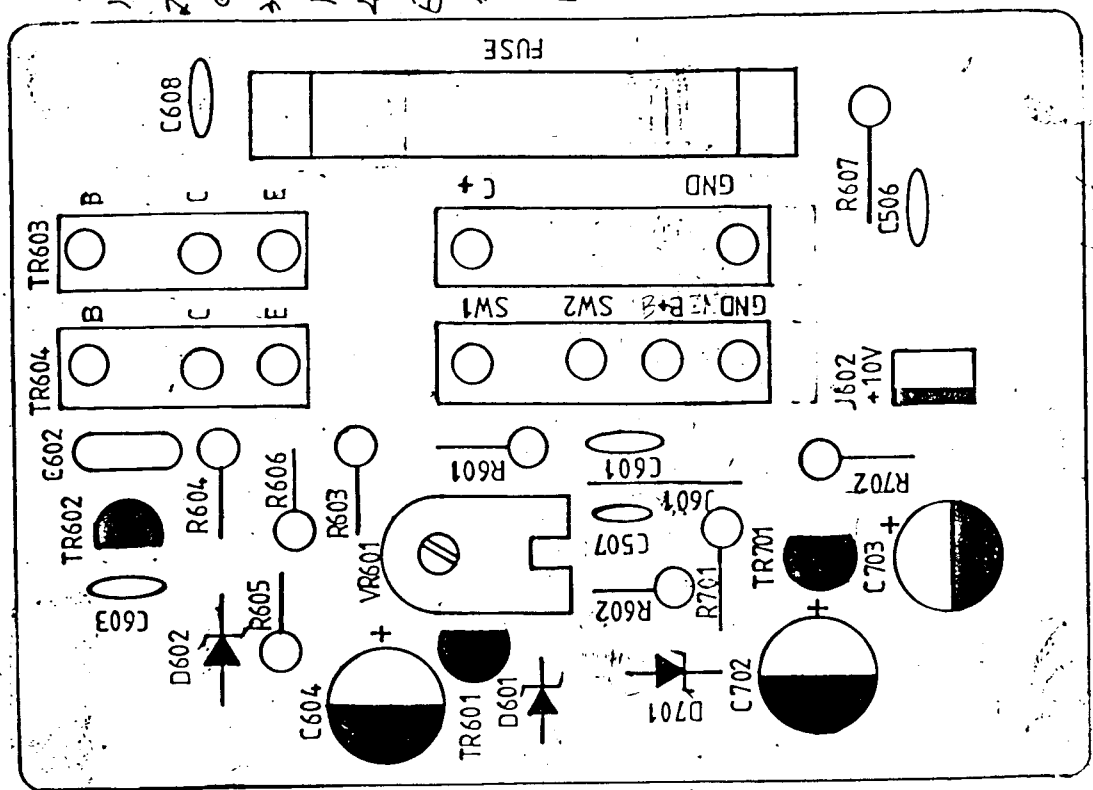
NOTE:

1. S: 2:1
2. 機種: SRC-3600
3. 圖號: SRC-3600-40

製圖: 林芳如

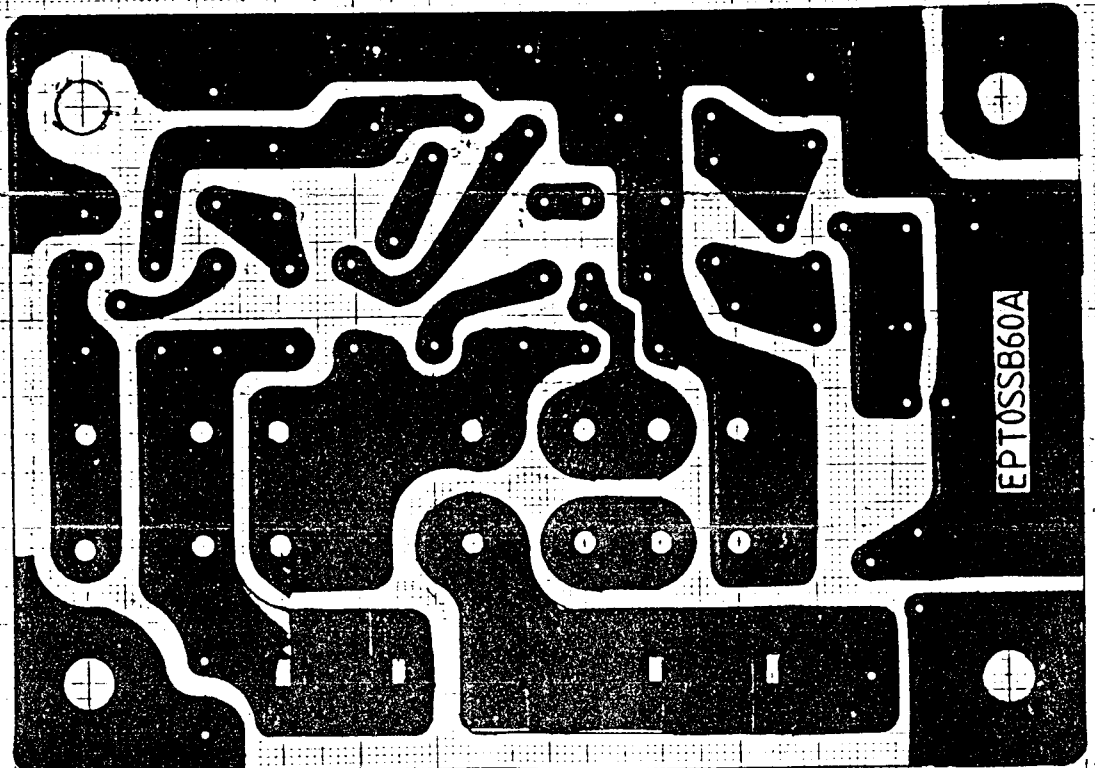
公司: 程遠

NOTE:
 1. S=Z=1
 2. 机种: GALAXY 55B
 3. 图名: POWER P.C.B
 4. 图号: EPT055B60A
 制图: 倪芳秀
 25.7.1

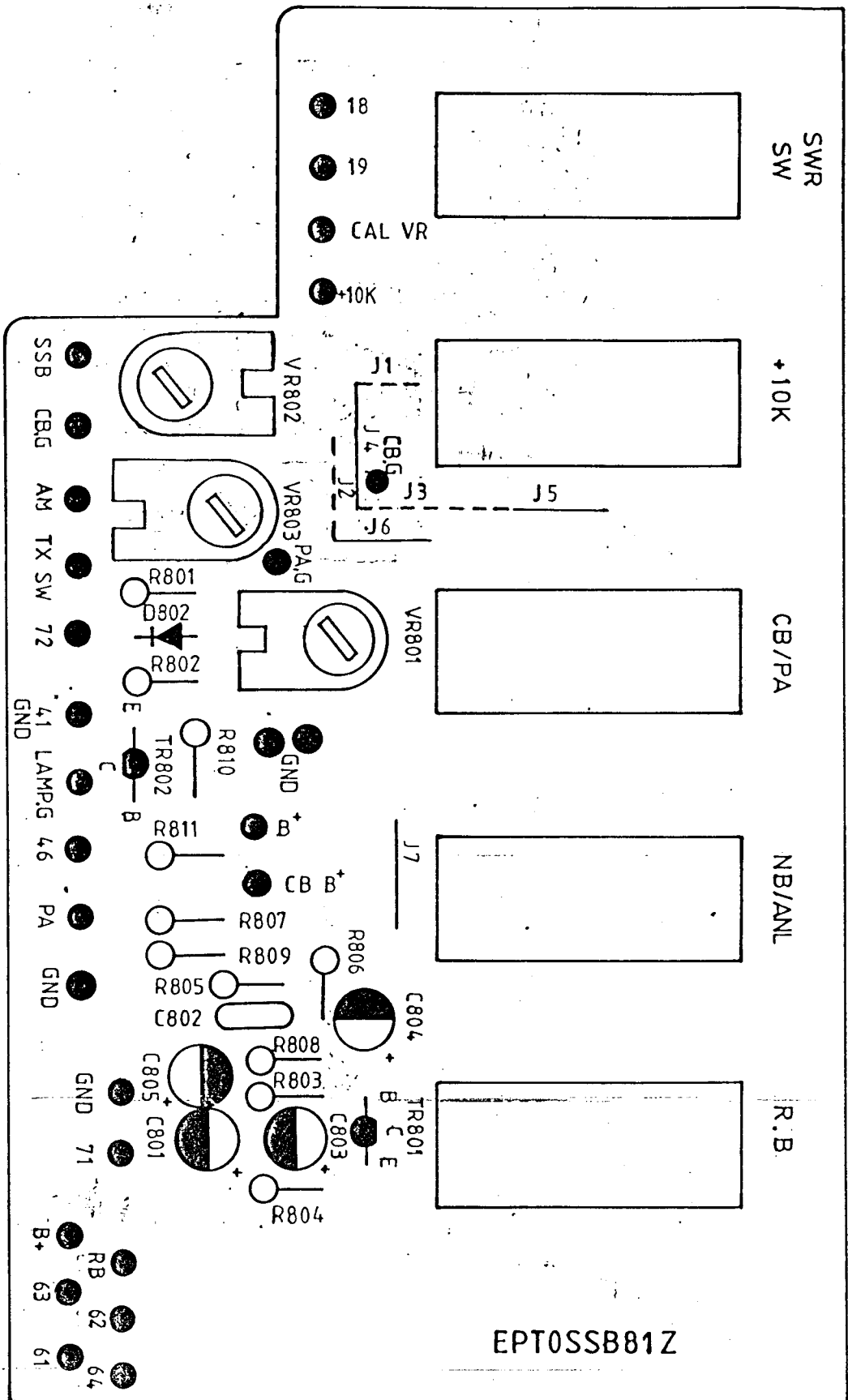


EPT055B60A

NOTE:
 1. S=Z=1
 2. 机种: GALAXY 55B
 3. 图名: POWER P.C.B
 4. 图号: EPT055B60A
 5. 尺寸: A=1.64
 B=0.8x1.7
 C=1.24
 D=1.04
 其餘0.84
 制图: 倪芳秀
 25.5.21.



141
 10cm
 ←



(4)

Function Selector

50%

EPT0SSB81Z

程遠

NOTE:

- 1. AS = 2:1
- 2. 板種 = USB_{SN}
- 3. 圖名 = LEVER PCB
- 4. 圖號 = EPTOSSB81Z
- 5. 孔径

- A. 1X1.5-00
- B. 1.24-9
- C. 1.4-61

共餘 0.8

型圖

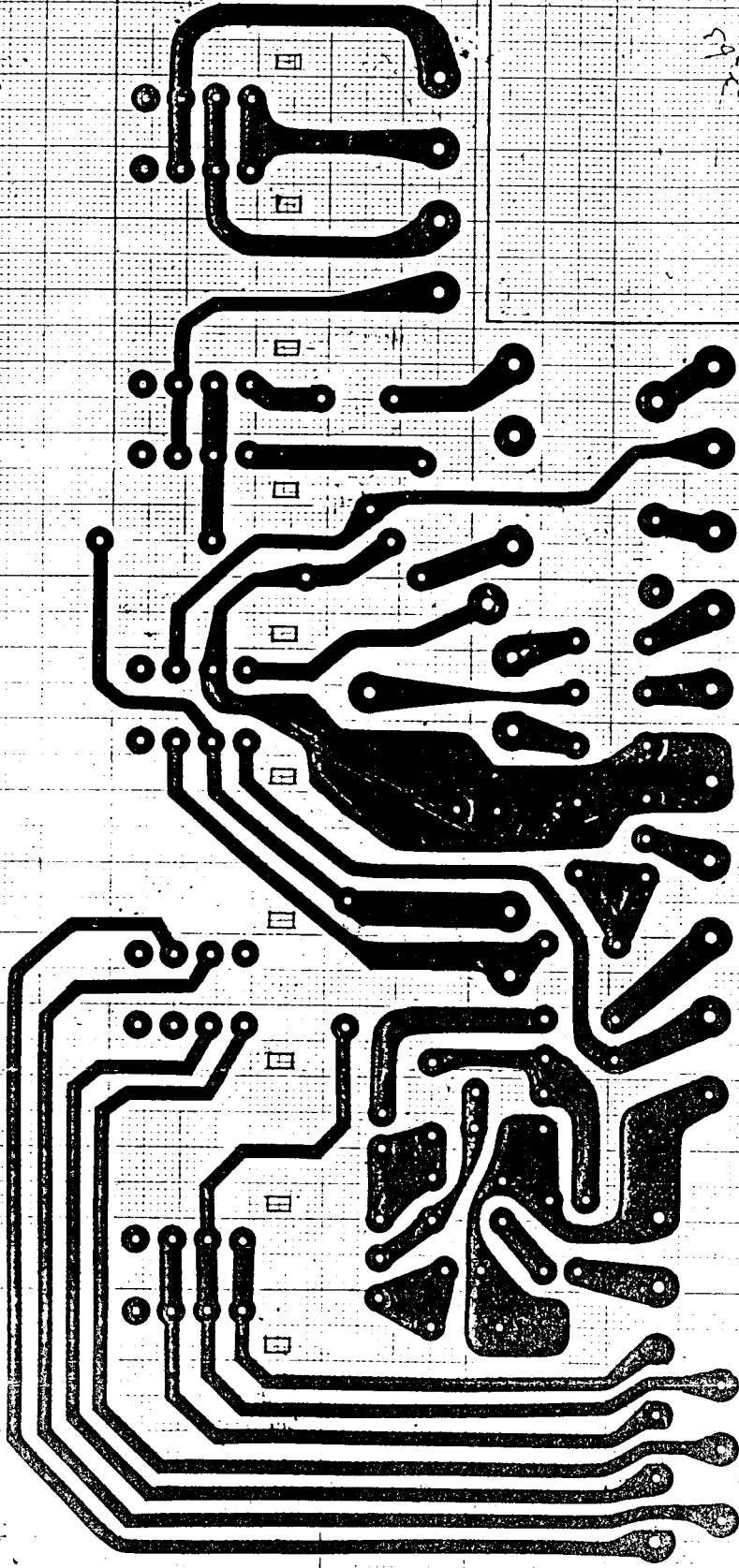
曾春

73.9.19

50/

加球

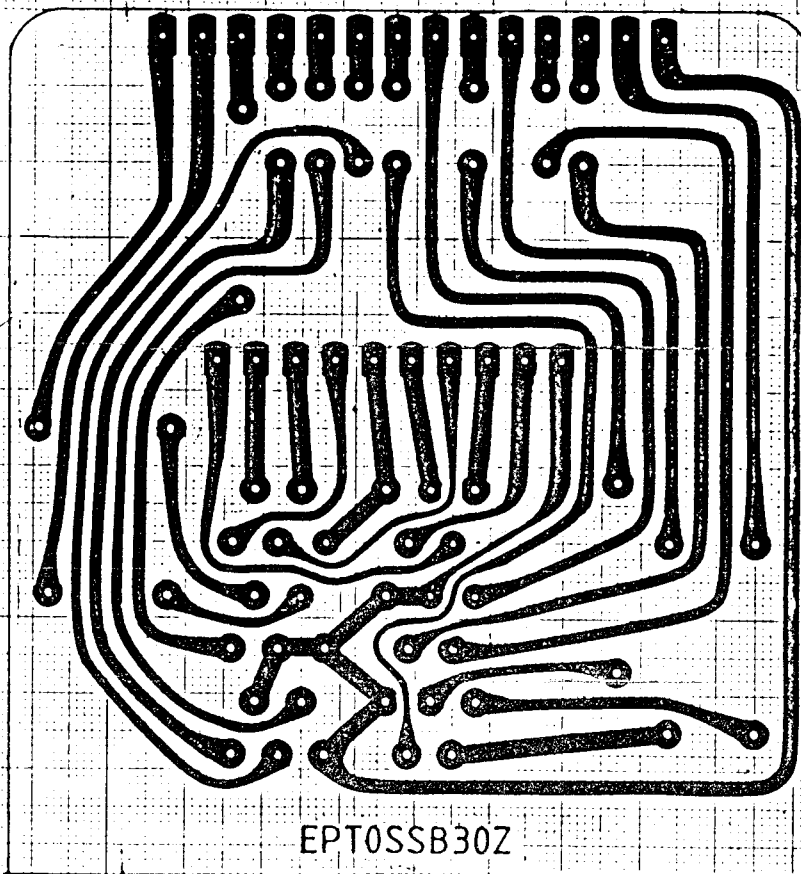
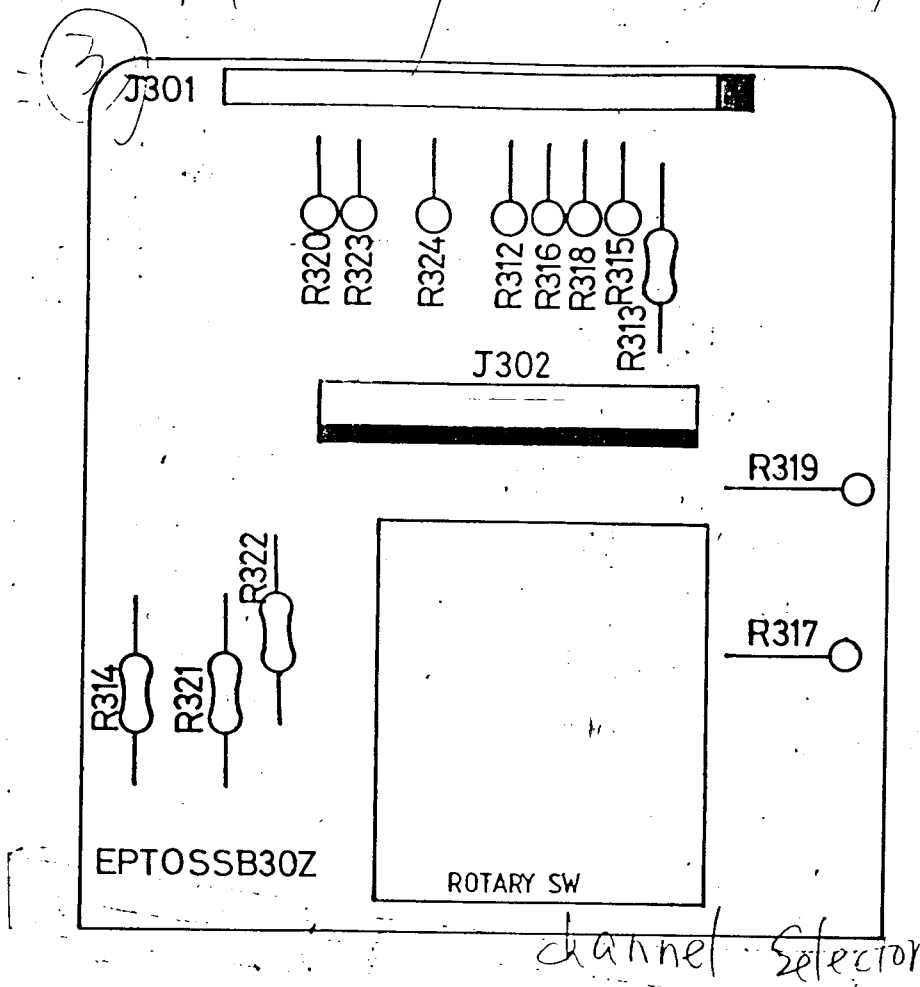
EPTOSSB81Z



50/

50/

50/



程遠

NOTE

1. S = 0:1
2. 板种 = SSB
3. 圖名 = R.S p.c.B
4. 圖号 = EPTOSSB02
5. 孔徑

A =

其餘 0.8⁺

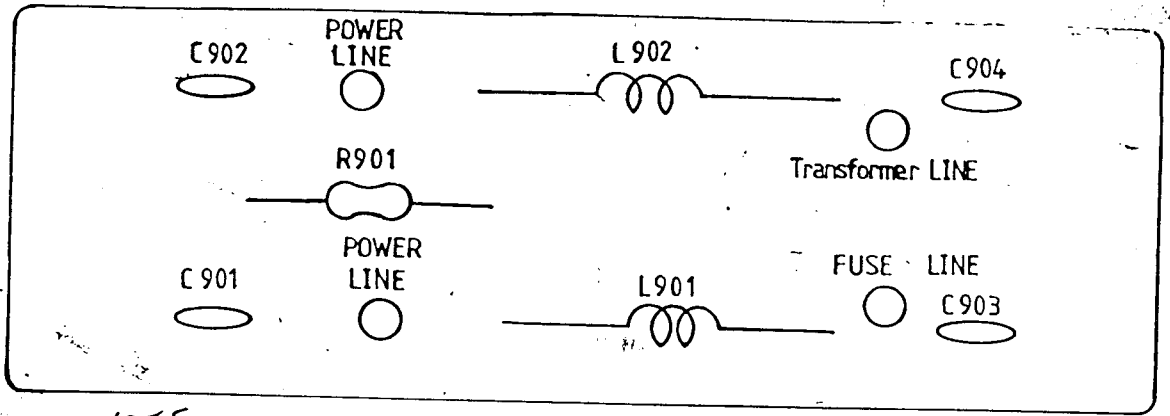
製圖:

廖春

73.9.19

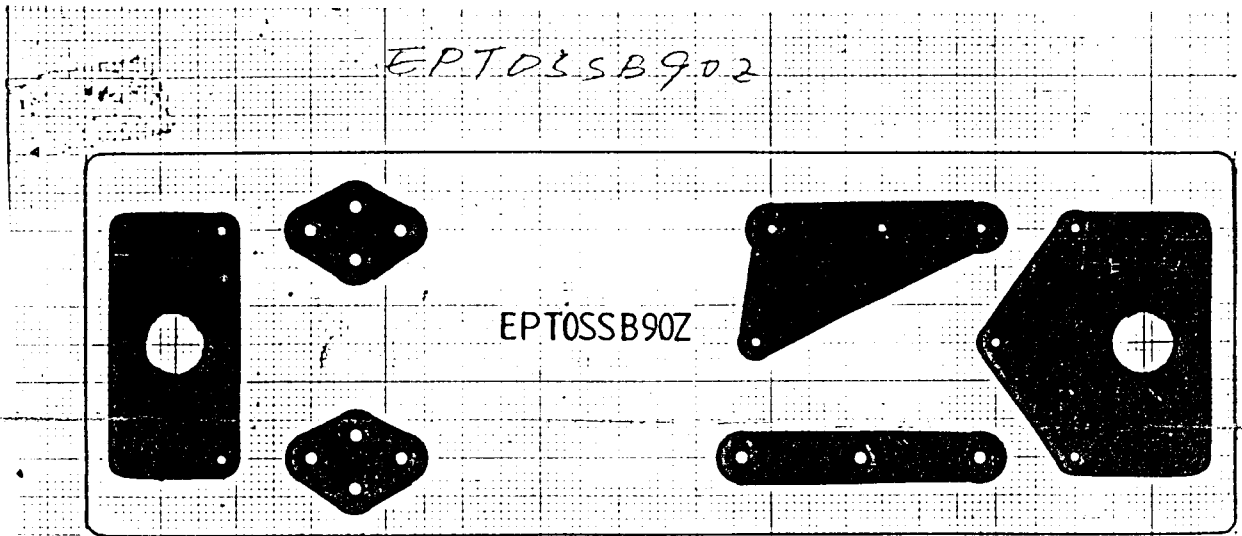
7-1

7/1
95



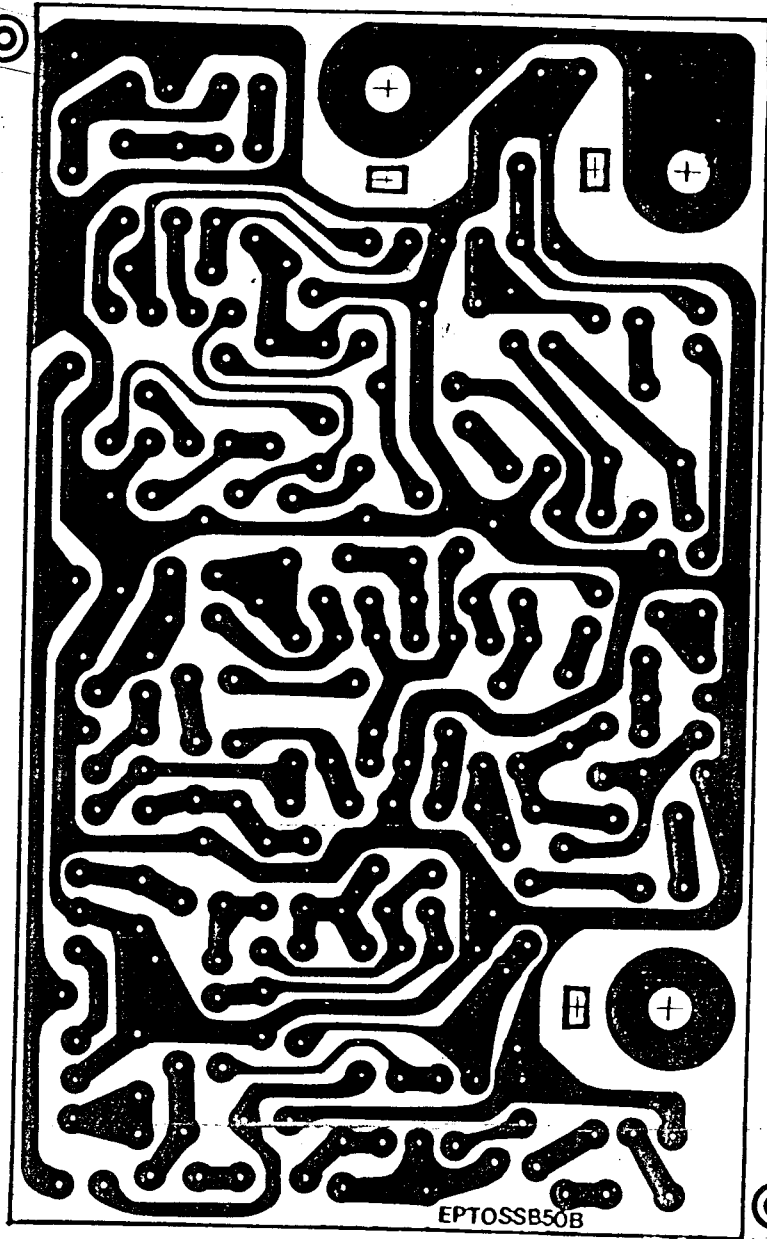
NOTE:
 1. S=2=1
 2. 机种: GALAXY 33B
 3. 图名: POWER INPUT P.C.B
 4. 图号: EPT055B90Z

制图: 田芳秀
 25.6.30



NOTE:
 1. S=2=1
 2. 机种: GALAXY 33B
 3. 图名: POWER INPUT P.C.B

4. 图号: EPT055B90Z
 5. 孔径 = $\phi 1.0$
 其他 $\phi 0.8$
 制图: 田芳秀
 25.5.21



NOTES:

- 1. S=2:1
- 2. MODEL: GALAXY PLUS C=3'-2

B=5'-1

C=3'-2

EPTOSSB50B

