

# **PRESIDENT**

**TRUMAN**

**SERVICE MANUAL**

## **-TECNNICAL CHARACTERITICS**

### **TRUMAN ( config: E d EU EC U PL )**

#### **1-GENERAL:**

##### **-Multiconfiguration(E,d,EU,EC,U,PL)**

- E ⇒ 40 channels AM/FM 4W (from 26,965Mhz to 27,405Mhz)
- d ⇒ 80 channels FM 4W (from 26,565Mhz to 27,405Mhz)  
40 channels AM 1W (from 26,965Mhz to 27,405Mhz)
- EU ⇒ 40 channels FM 4W/AM 1W (from 26,965Mhz to 27,405Mhz)
- EC ⇒ 40 channels FM 4W (from 26,965Mhz to 27,405Mhz)
- U ⇒ 40 channels CEPT FM 4W (from 26,965Mhz to 27,405Mhz)  
40 channels FM UK 4W (from 27,60125Mhz to 27,99125Mhz)
- PL ⇒ 40 channels AM/FM 4W (from 26,960Mhz to 27,400Mhz)

##### **-Channel step**

-10KHz

##### **-Class of emission**

-AM(A3E)/FM(F3E)

##### **-Power supply**

-13,2V (from 10,8V to 15,6V)

##### **-Antenna impedance**

-50Ω

##### **-Dimensions(in mm)**

-125(L)x45(H)x150(D)

##### **-Weight**

-0,7Kg

#### **2-TRANSMISSION:**

##### **-Frequency allowance**

-±200Hz

##### **-Transmission interference**

-Inferior to 4nW(-54dBm)

##### **-Audio frequency response**

-From 300Hz to 3kHz in AM/FM

##### **-Emitted power in the adjacent channel**

-Inferior to 20μW

##### **-Microphone sensitivity**

-Inferior to 10mV

##### **-Current drain**

-1,7A(in transmission mode with modulation)

##### **-Modulated signal distortion**

-Inferior to 2%

### **3-RECEPTION:**

**-Maximum sensitivity at 20dB sinad**

-0,5 $\mu$ V(-113dBm) AM/FM

**-Audio frequency response**

-From 300Hz to 3kHz in AM/FM

**-Adjacent channel selectivity**

-Superior to 60dB

**-Frequency image rejection**

-Superior to 60dB

**-Intermodulation response**

-Superior to 54dB

**-Maximum audio power**

-3W

**-Squelch sensitivity**

-Threshold 0,2 $\mu$ V(-120dBm)/Tight 1mV(-47dBm)

**-Current drain**

-300mA nominal/750mA maximum

# ALIGNMENT PROCEDURE (TRUMAN)

## \* VCO/PLL PORTION

- Alignment procedure
  - Test points
  - Frequencies chart

## \* TRANSMITTER

- Alignment procedure
  - Test points

## \* RECEIVER

- Alignment procedure
  - Test points

## Test equipment required

Frequency counter 200 Mhz	HF Generator
DC Voltmeter	BF Voltmeter
Distortimeter	HF Voltmeter
Wattmeter - Dummy load	Osilloscope
FM linear detector	Load 8 $\Omega$
AF generator	Sinad meter

## Conditions of Measurements on HF Generator

### Reception

AM mode: Level - 107 dBm Frequency 1 KHz with 60% of modulation.  
FM mode: Level - 107 dBm Frequency 1 KHz with 1,2KHz of deviation.

### Transmission

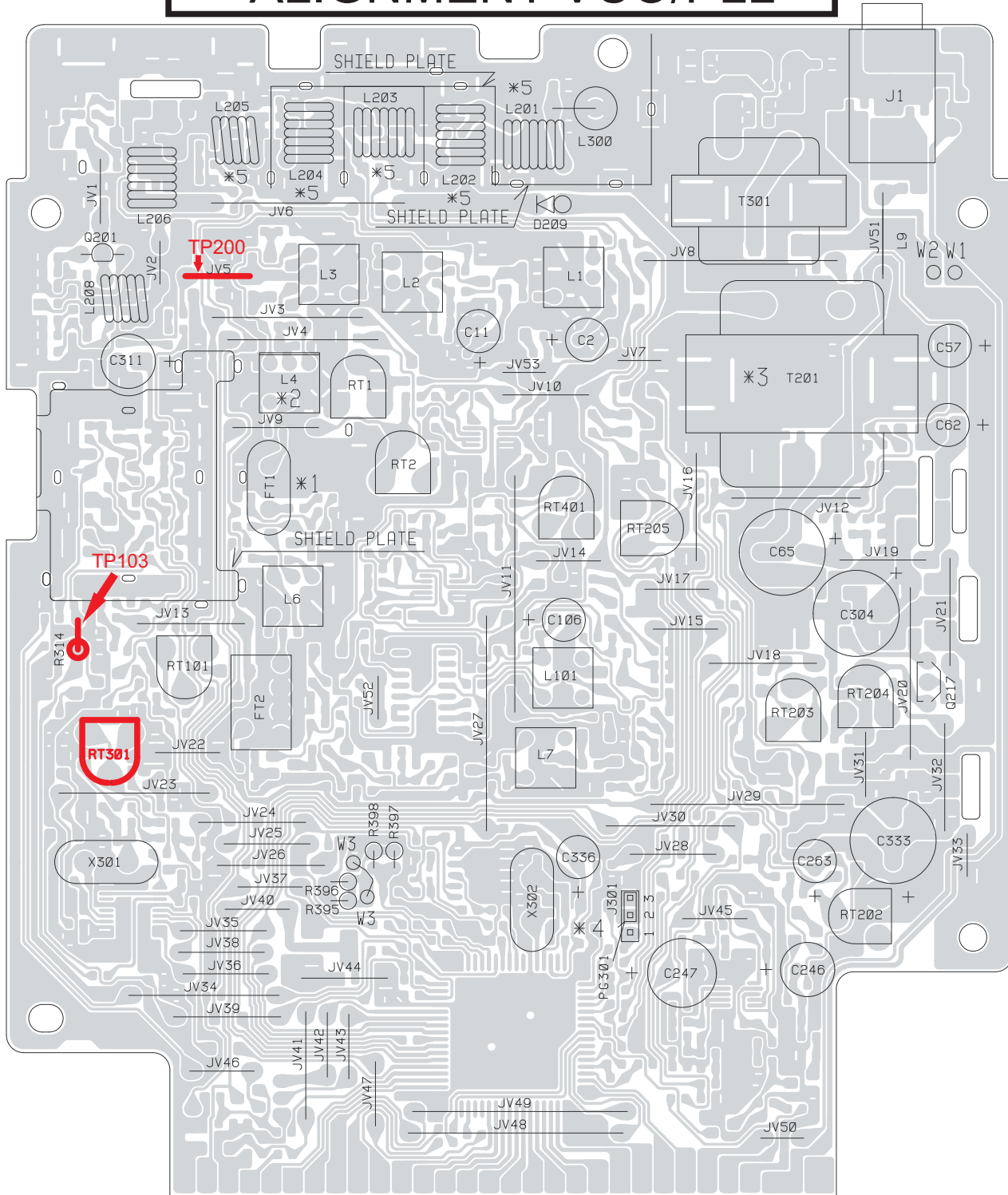
Frequency 1 KHz 30mV.

## ALIGNMENT VCO/PLL

### 1 - Alignment procedure(13,2V;configuration"EU,E,d")

STEP	CONDITION	ADJUSTMENT	REMARKS OF ADJUSTMENT
1	AM/FM(EU,E) RX mode Channel 20	RT301	Connect a frequency counter to TP200,and adjust RT301 to reach 37,900MHz.
2	AM/FM(EU,E) TX/RX mode Channel 40		Connect a voltmeter to TP 103,and check: $2,2V \pm 0,1V \leq Tx \text{ Channel } 40 \leq 3,2V \pm 0,1V$ $2,5V \pm 0,1V \leq Rx \text{ Channel } 40 \leq 3,5V \pm 0,1V$
3	AM/FM(EU,E) TX/RX mode Channel 1		Connect a voltmeter to TP 103,and check: Tx Channel 1=Tx Channel 40-0,3V $\pm$ 0,1V Rx Channel 1=Rx Channel 40-0,3V $\pm$ 0,1V
4	AM/FM(EU,E) TX/RX mode Channel 1 to 40 or 1 to 80(d)		Connect a frequency counter to TP200,and check frequencies.

# ALIGNMENT VCO/PLL



**- FREQUENCY LIST (EU,E,EC)**

CH	Channels Frequencies (MHz)	VCO Frequencies (MHz)
1	26,965	37,660
2	26,975	37,670
3	26,985	37,680
4	27,005	37,700
5	27,015	37,710
6	27,025	37,720
7	27,035	37,730
8	27,055	37,750
9	27,065	37,760
10	27,075	37,770
11	27,085	37,780
12	27,105	37,800
13	27,115	37,810
14	27,125	37,820
15	27,135	37,830
16	27,155	37,850
17	27,165	37,860
18	27,175	37,870
19	27,185	37,880
20	27,205	37,900
21	27,215	37,910
22	27,225	37,930
23	27,255	37,950
24	27,235	37,930
25	27,245	37,940
26	27,265	37,960
27	27,275	37,970
28	27,285	37,980
29	27,295	37,990
30	27,305	38,000
31	27,315	38,010
32	27,325	38,020
33	27,335	38,030
34	27,345	38,040
35	27,355	38,050
36	27,365	38,060
37	27,375	38,070
38	27,385	38,080
39	27,395	38,090
40	27,405	38,100

**- FREQUENCY LIST (PL)**

CH	Channels Frequencies (MHz)	VCO Frequencies (MHz)
1	26,960	37,655
2	26,970	37,665
3	26,980	37,675
4	27,000	37,695
5	27,010	37,705
6	27,020	37,715
7	27,030	37,725
8	27,050	37,745
9	27,060	37,755
10	27,070	37,765
11	27,080	37,775
12	27,100	37,795
13	27,110	37,805
14	27,120	37,815
15	27,130	37,825
16	27,150	37,845
17	27,160	37,855
18	27,170	37,865
19	27,180	37,875
20	27,200	37,895
21	27,210	37,905
22	27,220	37,915
23	27,250	37,945
24	27,230	37,925
25	27,240	37,935
26	27,260	37,955
27	27,270	37,965
28	27,280	37,975
29	27,290	37,985
30	27,300	37,995
31	27,310	38,005
32	27,320	38,015
33	27,330	38,025
34	27,340	38,035
35	27,350	38,045
36	27,360	38,055
37	27,370	38,065
38	27,380	38,075
39	27,390	38,085
40	27,400	38,095



**- FREQUENCY LIST (U)**

CH CEPT	Channels Frequencies (MHz)	VCO Frequencies (MHz)
1	26,965	37,660
2	26,975	37,670
3	26,985	37,680
4	27,005	37,700
5	27,015	37,710
6	27,025	37,720
7	27,035	37,730
8	27,055	37,750
9	27,065	37,760
10	27,075	37,770
11	27,085	37,780
12	27,105	37,800
13	27,115	37,810
14	27,125	37,820
15	27,135	37,830
16	27,155	37,850
17	27,165	37,860
18	27,175	37,870
19	27,185	37,880
20	27,205	37,900
21	27,215	37,910
22	27,225	37,930
23	27,255	37,950
24	27,235	37,930
25	27,245	37,940
26	27,265	37,960
27	27,275	37,970
28	27,285	37,980
29	27,295	37,990
30	27,305	38,000
31	27,315	38,010
32	27,325	38,020
33	27,335	38,030
34	27,345	38,040
35	27,355	38,050
36	27,365	38,060
37	27,375	38,070
38	27,385	38,080
39	27,395	38,090
40	27,405	38,100

**- FREQUENCY LIST (U)**

CH UK	Channels Frequencies (MHz)	VCO Frequencies (MHz)
1	27,60125	38,29625
2	27,61125	38,30625
3	27,62125	38,31625
4	27,63125	38,32625
5	27,64125	38,33625
6	27,65125	38,34625
7	27,66125	38,35625
8	27,67125	38,36625
9	27,68125	38,37625
10	27,69125	38,38625
11	27,70125	38,39625
12	27,71125	38,40625
13	27,72125	38,41625
14	27,73125	38,42625
15	27,74125	38,43625
16	27,75125	38,44625
17	27,76125	38,45625
18	27,77125	38,46625
19	27,78125	38,47625
20	27,79125	38,48625
21	27,80125	38,49625
22	27,81125	38,50625
23	27,82125	38,51625
24	27,83125	38,52625
25	27,84125	38,53625
26	27,85125	38,54625
27	27,86125	38,55625
28	27,87125	38,56625
29	27,88125	38,57625
30	27,89125	38,58625
31	27,90125	38,59625
32	27,91125	38,60625
33	27,92125	38,61625
34	27,93125	38,62625
35	27,94125	38,63625
36	27,95125	38,64625
37	27,96125	38,65625
38	27,97125	38,66625
39	27,98125	38,67625
40	27,99125	38,68625

**- FREQUENCY LIST (d)**

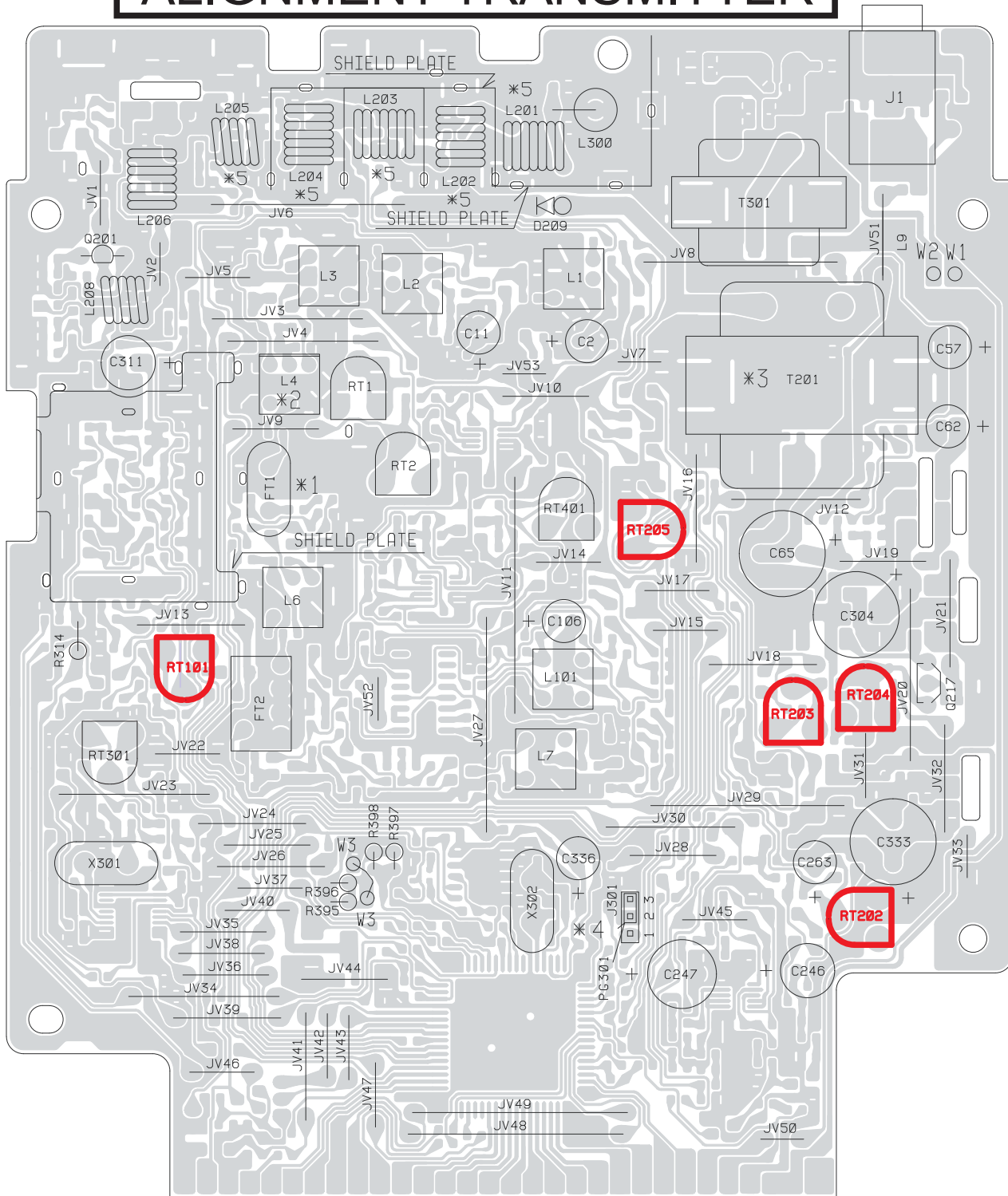
CH	Channels	VCO	CH	Channels	VCO
D	Frequencies (MHz)	Frequencies (MHz)	D	Frequencies (MHz)	Frequencies (MHz)
1	26,965	37,660	41	26,565	37,260
2	26,975	37,670	42	26,575	37,270
3	26,985	37,680	43	26,585	37,280
4	27,005	37,70	44	26,595	37,290
5	27,015	37,710	45	26,605	37,300
6	27,025	37,720	46	26,615	37,310
7	27,035	37,730	47	26,625	37,320
8	27,055	37,750	48	26,635	37,330
9	27,065	37,760	49	26,645	37,340
10	27,075	37,770	50	26,655	37,350
11	27,085	37,780	51	26,665	37,360
12	27,105	37,800	52	26,675	37,370
13	27,115	37,810	53	26,685	37,380
14	27,125	37,820	54	26,695	37,390
15	27,135	37,830	55	26,705	37,400
16	27,155	37,850	56	26,715	37,410
17	27,165	37,860	57	26,725	37,420
18	27,175	37,870	58	26,735	37,430
19	27,185	37,880	59	26,745	37,440
20	27,205	37,900	60	26,755	37,450
21	27,215	37,910	61	26,765	37,460
22	27,225	37,930	62	26,775	37,470
23	27,255	37,950	63	26,785	37,480
24	27,235	37,930	64	26,795	37,490
25	27,245	37,940	65	26,805	37,500
26	27,265	37,960	66	26,815	37,510
27	27,275	37,970	67	26,825	37,520
28	27,285	37,980	68	26,835	37,530
29	27,295	37,990	69	26,845	37,540
30	27,305	38,000	70	26,855	37,550
31	27,315	38,010	71	26,865	37,560
32	27,325	38,020	72	26,875	37,570
33	27,335	38,030	73	26,885	37,580
34	27,345	38,040	74	26,895	37,590
35	27,355	38,050	75	26,905	37,600
36	27,365	38,060	76	26,915	37,610
37	27,375	38,070	77	26,925	37,620
38	27,385	38,080	78	26,935	37,630
39	27,395	38,090	79	26,945	37,640
40	27,405	38,100	80	26,955	37,650

# ALIGNMENT TRANSMITTER

## 1 - Alignment procedure(13,2V;configuration'EU,E')

STEP	CONDITION	ADJUSTMENT	REMARKS OF ADJUSTMENT
1	AM(EU)TX Channel 20	RT203	Connect a wattmeter to jack antenna, adjust RT203 to reach 1W on the wattmeter.
2	FM(EU)TX Channel 20	RT204	Connect a wattmeter to jack antenna, adjust RT204 to reach 4W on the wattmeter.
3	Same as 1		Connect a dummy load to jack antenna. Check that the "RF meter" display S1
4	Same as 2		Connect a dummy load to jack antenna. Check that the "RF meter" display S9
5	FM(EU)TX Mod 30 mV 1 KHz CH 20	RT101	Adjust RT101 reach $\pm 1,2$ KHz of deviation.
6	AM(E)TX Mod 30 mV 1 KHz CH 20	RT202/RT205	First: Adjust RT202 and RT205 to the maximum of modulation, then adjust RT205 to reach $\pm 90\%$ of modulation, then adjust RT202 to reach $\pm 85\%$ of modulation.

# ALIGNMENT TRANSMITTER

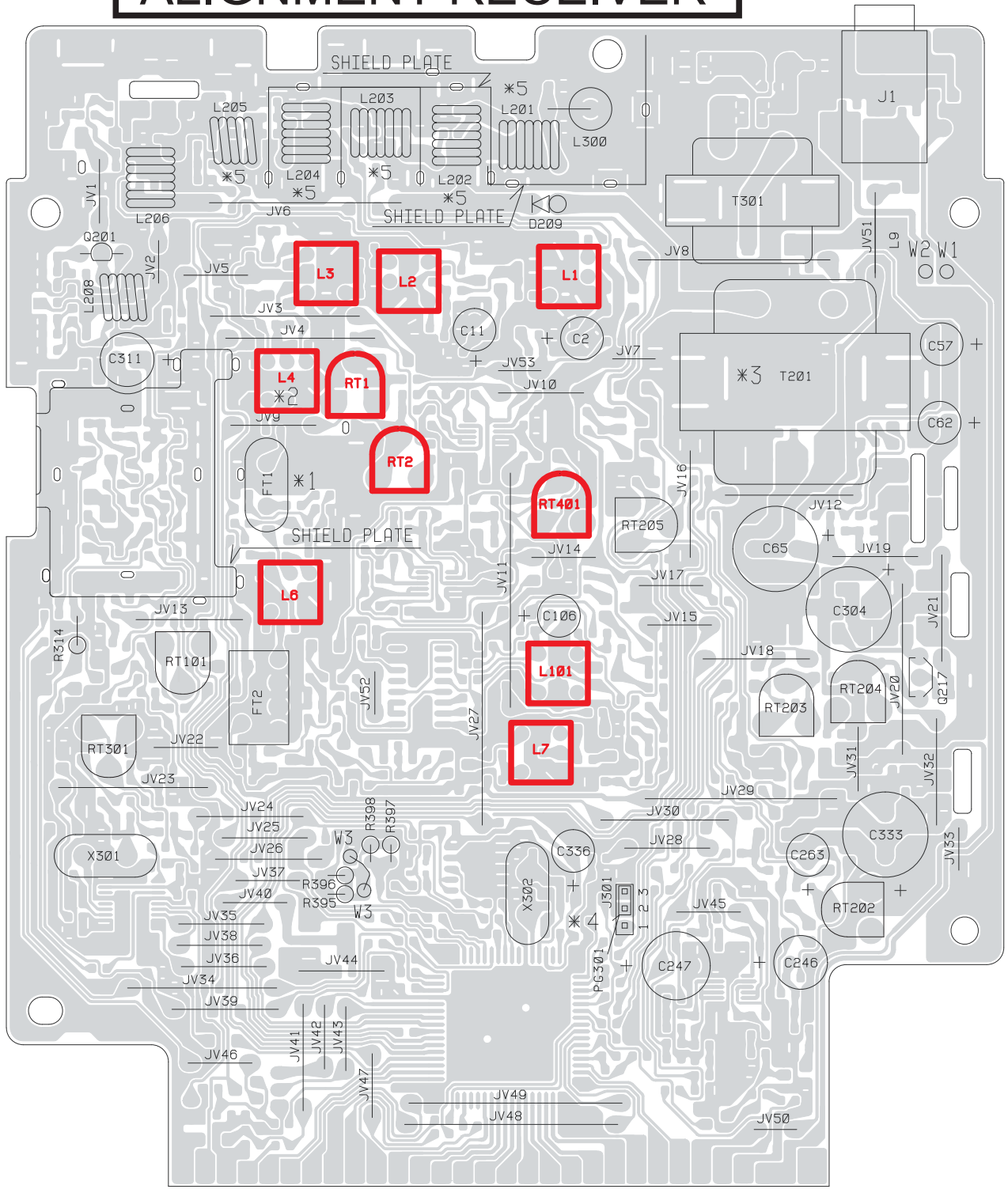


# ALIGNMENT RECEIVER

## 1 - Alignment procedure(13,2V;configuration"EU,E")

STEP	CONDITION	ADJUSTMENT	REMARKS OF ADJUSTMENT
1	AM(EU,E) Channel 20 Middle volume level. No squelch active	L1-L2-L3 L4-L6-L7	Connect HF generator to jack antenna adjusted at ( -107dBm 1KHz 60%), connect sinad meter to jack EXT speaker and adjust coils for maximum sensitivity( $\geq 20$ dB sinad).
2	FM(EU,E) Channel 20 Middle volume level No squelch active	L 101	Connect HF generator to jack antenna adjusted at ( -107dBm 1KHz 1,2KHz Dev),connect sinad meter to jack EXT speaker and adjust L101for maximum sensitivity( $\geq 20$ dB sinad).
3	AM(EU,E) Channel 20 Middle volume level No squelch active	RT1(S-METER)	Connect HF generator to jack antenna adjusted at ( -67dBm 1KHz 60%) and adjust RT1 so that the "S meter" display S9.
4	AM(EU,E) Channel 20 Middle volume level Squelch maximum clockwise	RT2(SQ)	Connect HF generator to jack antenna adjusted at ( -47dBm 1KHz 60%) and adjust RT2 so that the signal is audible .
5	AM(EU,E) Channel 20 Middle volume level Squelch maximum counterclockwise (ASC)	RT401(ASC)	Connect HF generator to jack antenna. Connect sinad meter to jack EXT speaker, adjust the ouput level of HF generator and check that the opening ASC sinad is $20\text{dB} \pm 2\text{dB}$ .If not adjust RT401.

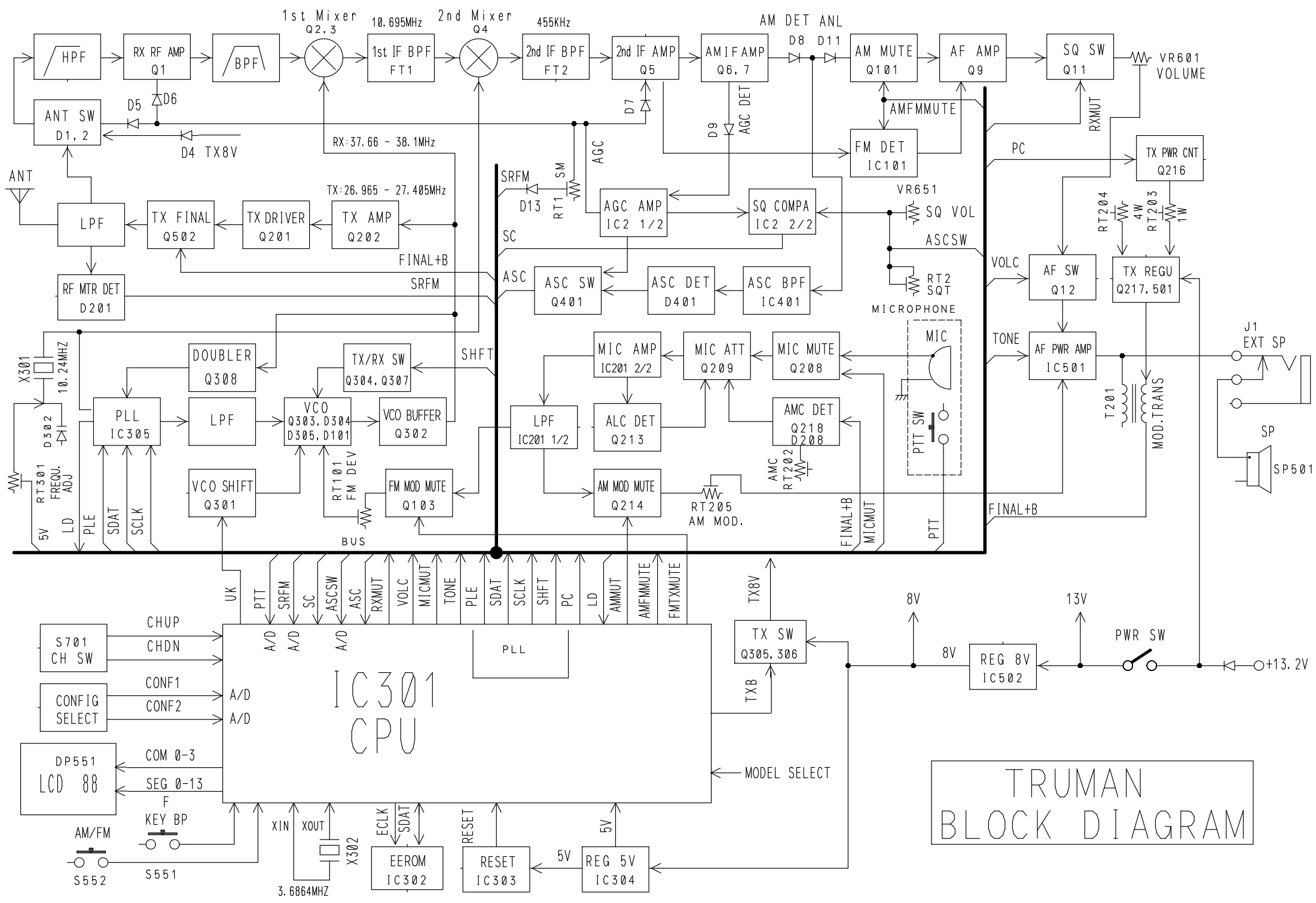
# ALIGNMENT RECEIVER



**TRUMAN**

**BLOC DIAGRAM**

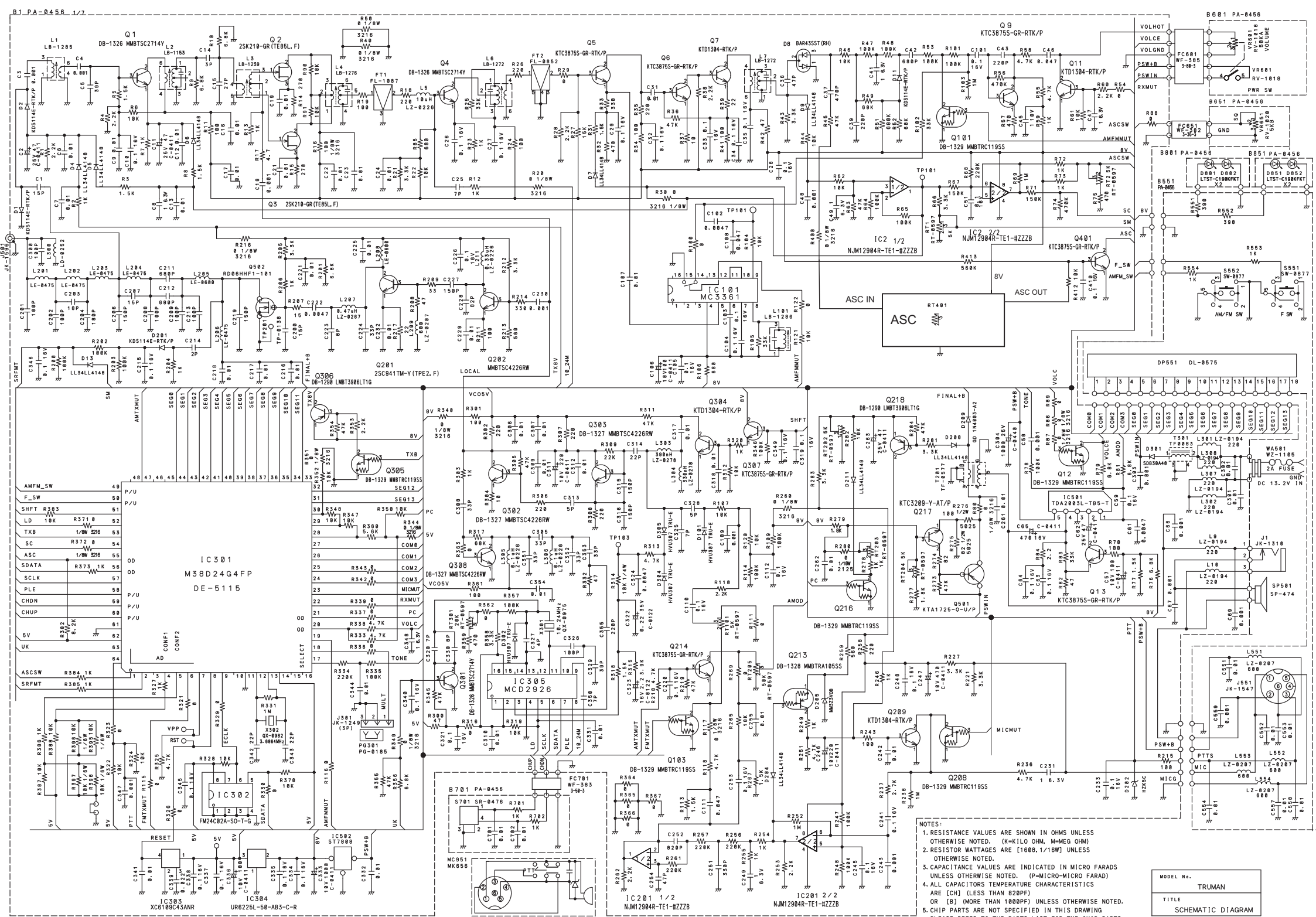




TRUMAN  
BLOCK DIAGRAM

**TRUMAN**

**SCHEMATIC DIAGRAM**



- NOTES:
1. RESISTANCE VALUES ARE SHOWN IN OHMS UNLESS OTHERWISE NOTED. (K=KILO OHM, M=MEG OHM)
  2. RESISTOR WATTAGES ARE (1608, 1/16W) UNLESS OTHERWISE NOTED.
  3. CAPACITANCE VALUES ARE INDICATED IN MICRO FARADS UNLESS OTHERWISE NOTED. (P=MICRO-MICRO FARAD)
  4. ALL CAPACITORS TEMPERATURE CHARACTERISTICS ARE (CH) (LESS THAN 820PF)
  5. OR [B] (MORE THAN 1000PF) UNLESS OTHERWISE NOTED.
  6. CHIP PARTS ARE NOT SPECIFIED IN THIS DRAWING PLEASE REFER TO THE PARTS LIST FOR THE CHIP PARTS.

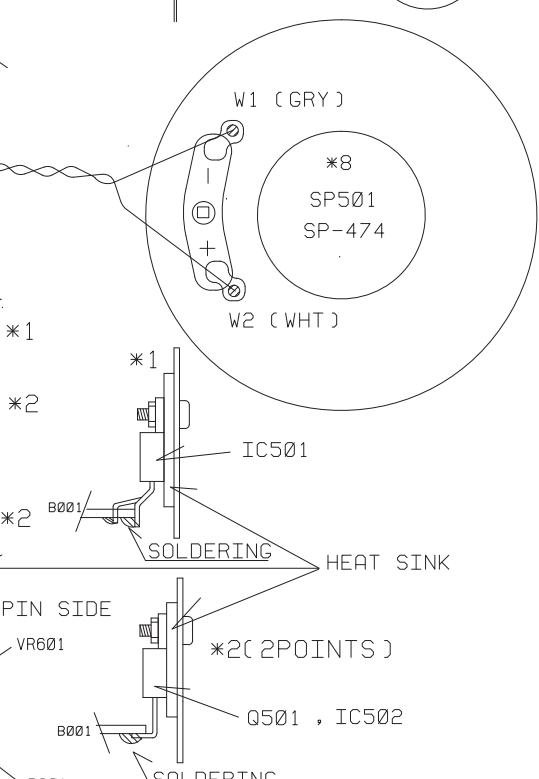
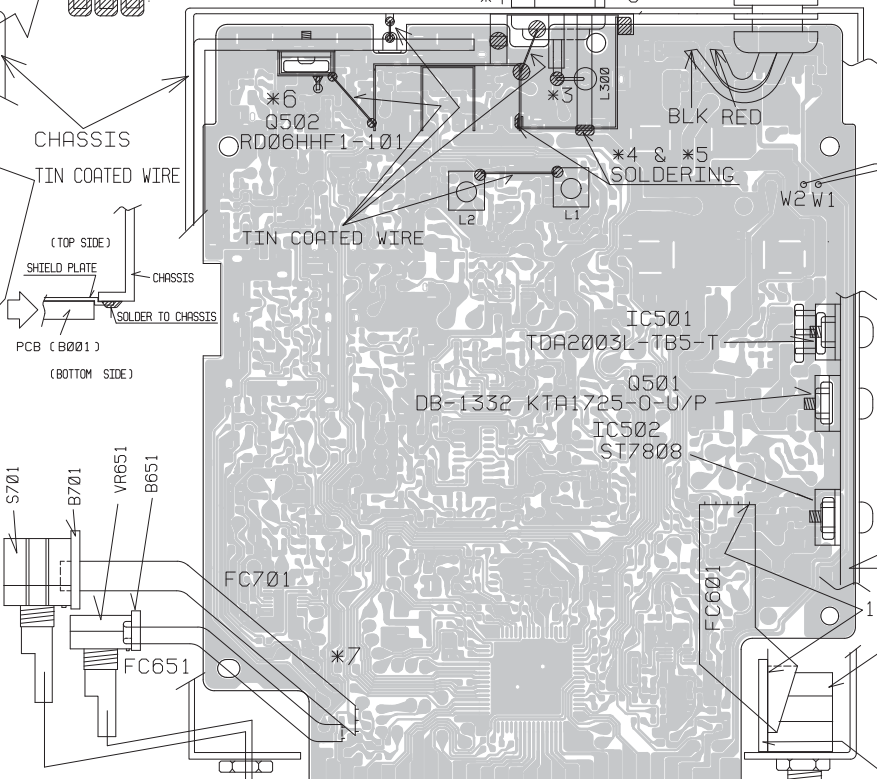
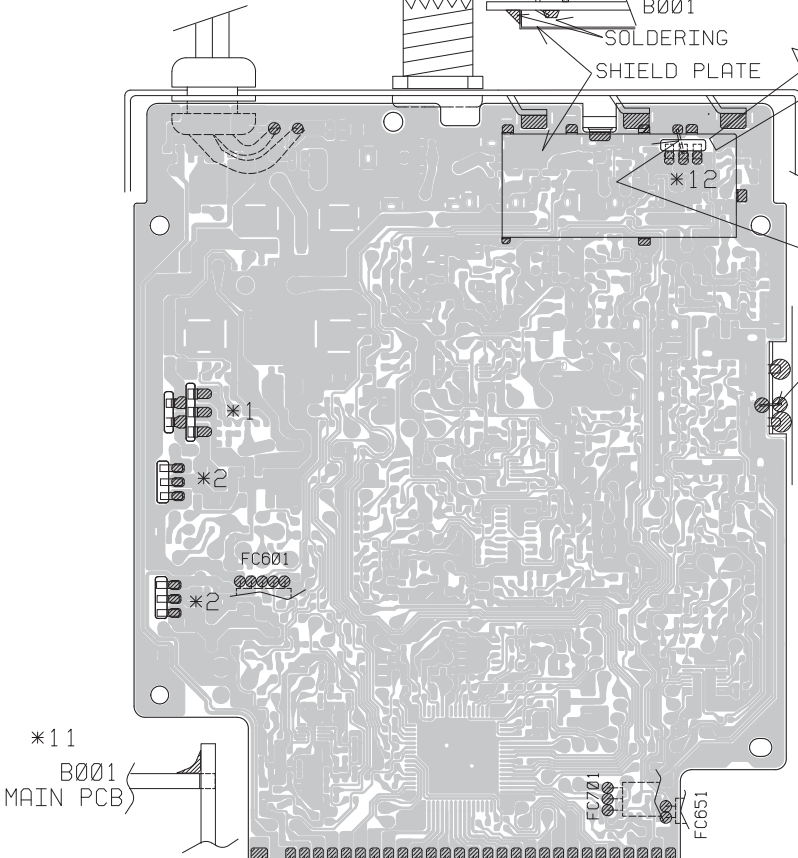
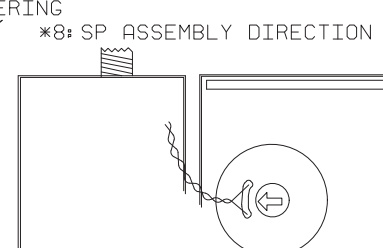
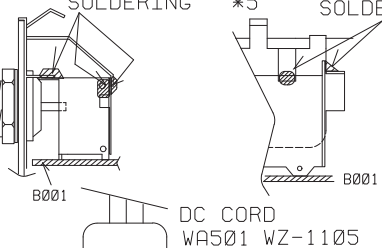
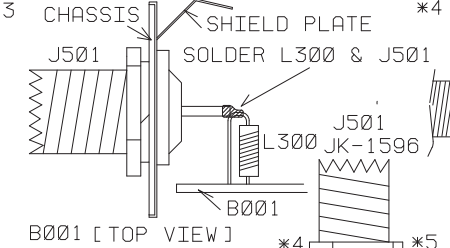
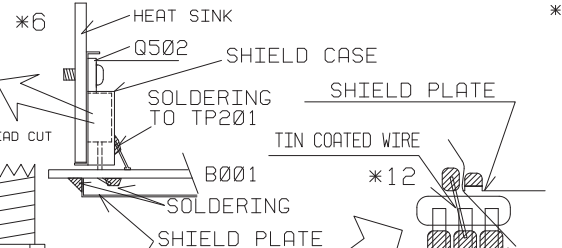
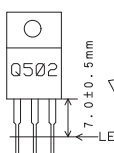
MODEL NO.	TRUMAN
TITLE	SCHEMATIC DIAGRAM

**TRUMAN**

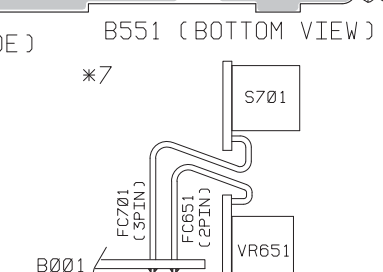
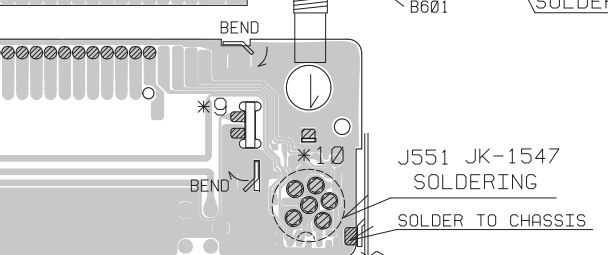
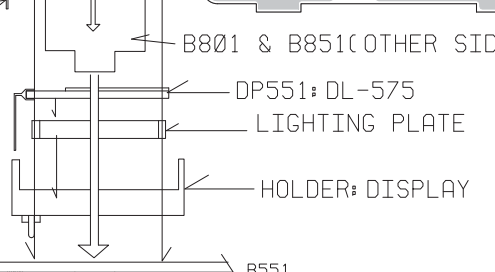
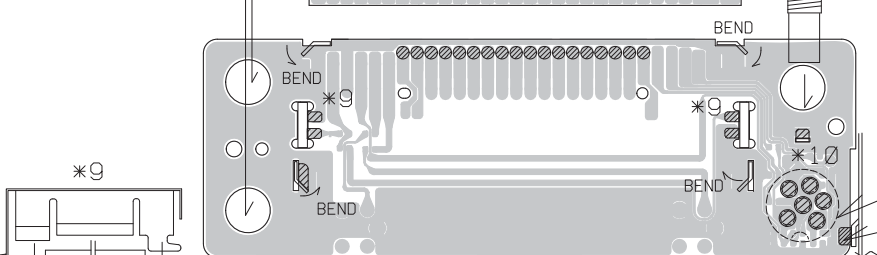
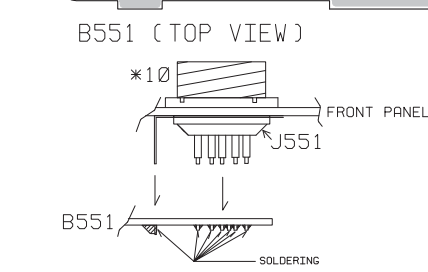
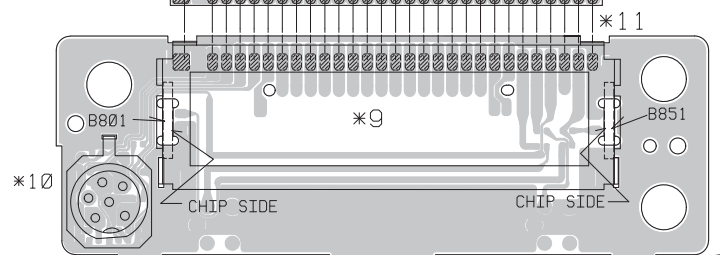
**COMPONENT LAYOUT**

⊘ : SOLDERING

B001  
[BOTTOM VIEW]



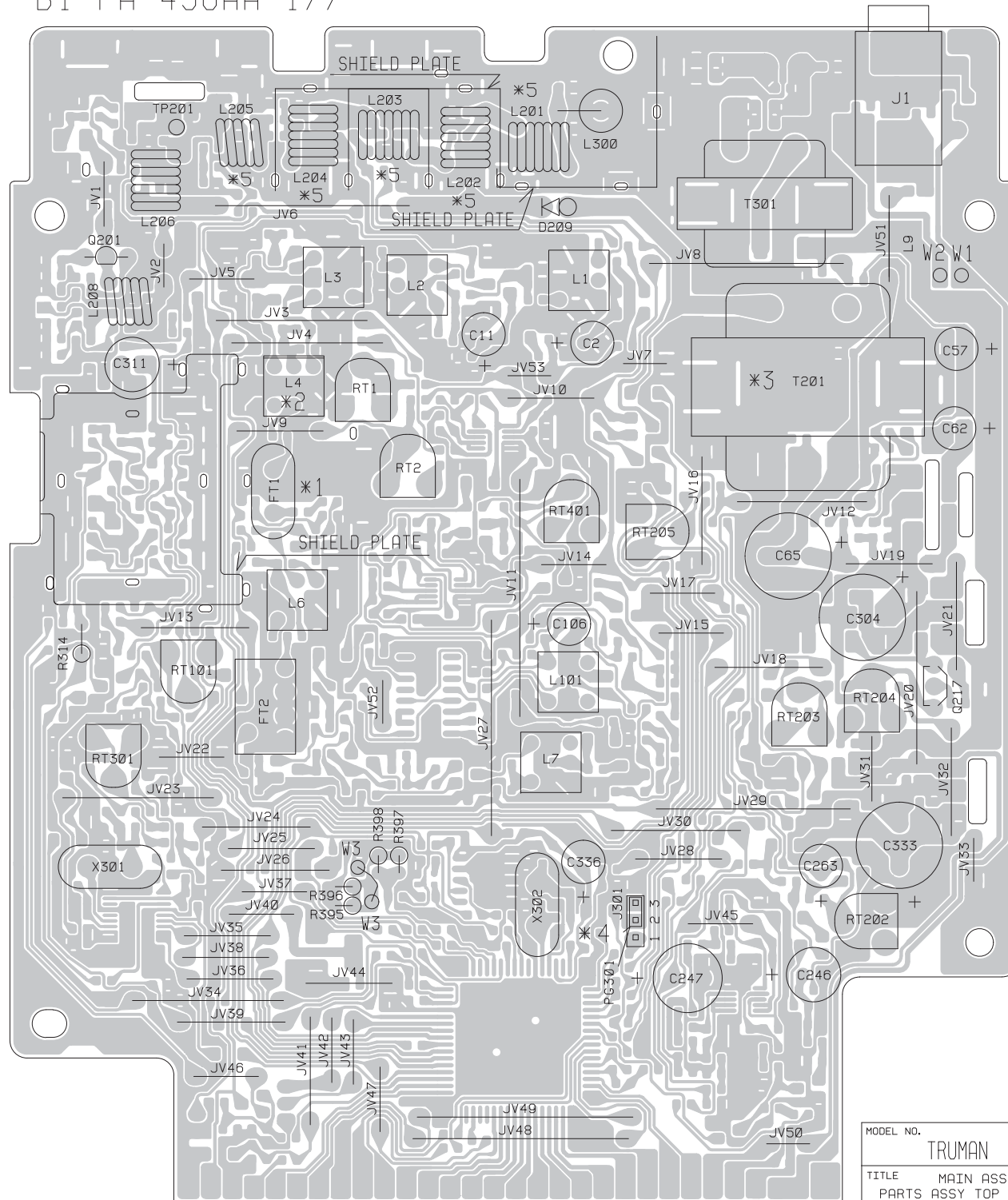
\*11  
B001  
MAIN PCB)



MODEL NO.	TRUMAN
TITLE	WIRING DIAGRAM

(MAIN PCB TOP VIEW)

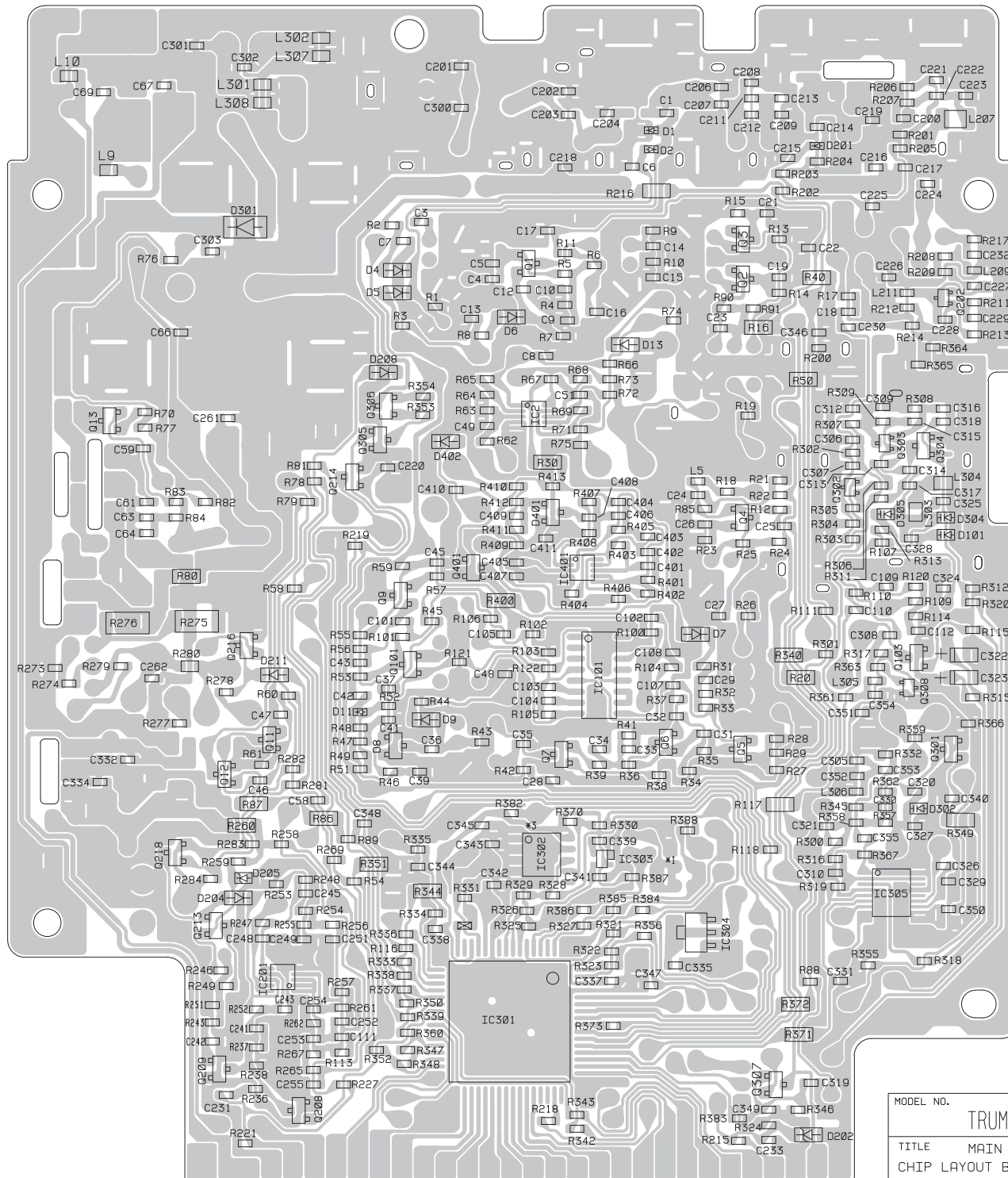
B1 PA-456AA 1/7



MODEL NO.	TRUMAN
TITLE	MAIN ASSY PARTS ASSY TOP VIEW



(MAIN PCB BOTTOM VIEW)  
B1 PA-456AA 1/7



MODEL NO. TRUMAN  
TITLE MAIN ASSY  
CHIP LAYOUT BOTTOM VIEW

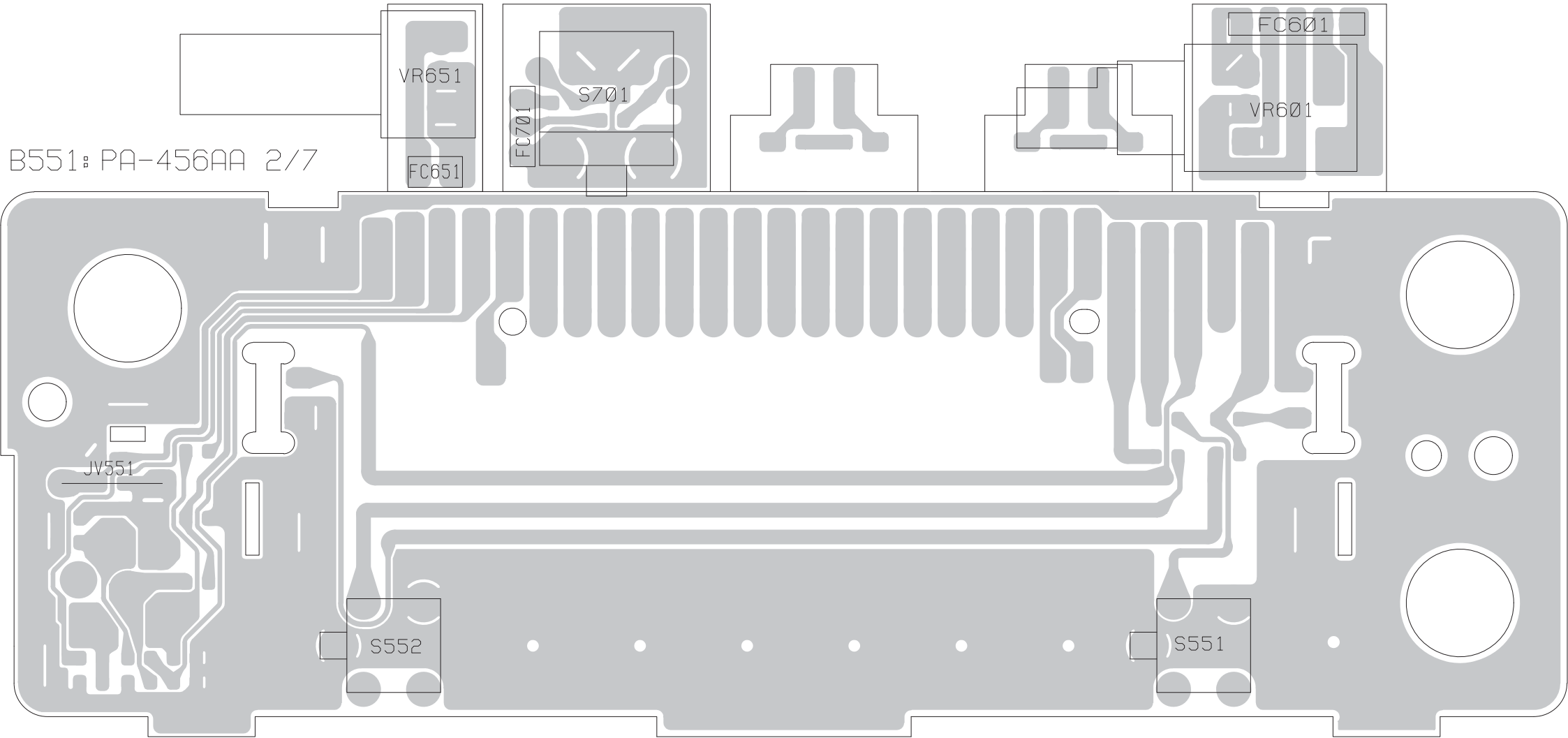
( TOP VIEW )

B651: PA-456AA 4/7

B701: PA-456AA 5/7

B601: PA-456AA 3/7

B551: PA-456AA 2/7

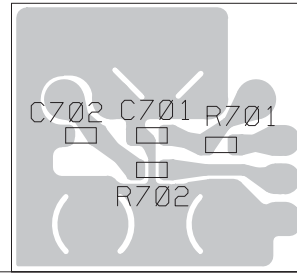
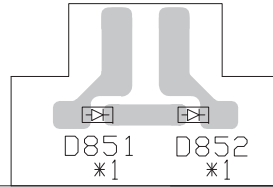
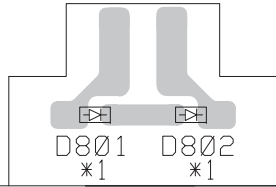


MODEL NO.	TRUMAN
TITLE	FRONT/VOL/SQ/CH SW PARTS ASS'Y TOP VIEW

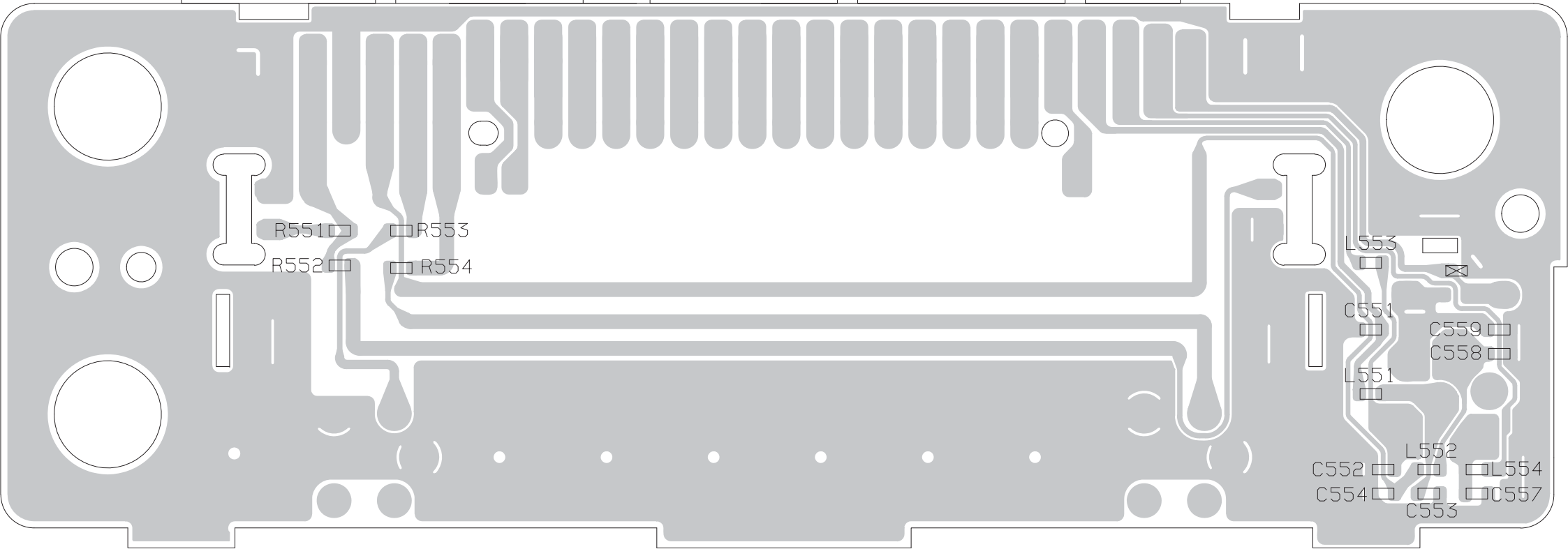


# ( BOTTOM VIEW )

B801 PA-456AA 6/7    B851 PA-456AA 7/7    B701 PA-456AA 5/7



B551 PA-456AA 2/7



MODEL NO.
TRUMAN
TITLE FRONT/CH SW/LED L/LED R
CHIP LAYOUT BOTTOM VIEW

# **TRUMAN**

## **COMPONENTS LIST**

# COMPONENTS LIST

## TRUMAN INQUIRY BOM

ASSY CODE	PARTS CODE	DESCRIPTION	SPEC	REF NO
AT384ZKBAE	BCHL111016G	C:ELECTROLYTIC	100UF 10V M C-411	C057
AT384ZKBAE	BCHL111016G	C:ELECTROLYTIC	100UF 10V M C-411	C106
AT384ZKBAE	BCHL111016G	C:ELECTROLYTIC	100UF 10V M C-411	C336
AT384ZKBAE	BCHL111026G	C:ELECTROLYTIC	1000UF 10V M C-411	C333
AT384ZKBAE	BCHL112216G	C:ELECTROLYTIC	220UF 10V M C-411	C246
AT384ZKBAE	BCHL112216G	C:ELECTROLYTIC	220UF 10V M C-411	C311
AT384ZKBAE	BCHL114716G	C:ELECTROLYTIC	470UF 10V M C-411	C247
AT384ZKBAE	BCHL314716G	C:ELECTROLYTIC	470UF 16V M C-411	C065
AT384ZKBAE	BCHL514706G	C:ELECTROLYTIC	47UF 25V M C-411	C002
AT384ZKBAE	BCHL514706G	C:ELECTROLYTIC	47UF 25V M C-411	C011
AT384ZKBAE	BCHL514706G	C:ELECTROLYTIC	47UF 25V M C-411	C062
AT384ZKBAE	BCHL514706G	C:ELECTROLYTIC	47UF 25V M C-411	C263
AT384ZKBAE	BCJW511026G	C:ELECTROLYTIC	1000UF 25V M C-440	C304
AT384ZKBAE	BCML111055G	C:CERAMIC M/L (1608) TAPE	1UF 10V K B	C045
AT384ZKBAE	BCML311045G	C:CERAMIC M/L (1608) TAPE	0.1UF 16V K B	C010
AT384ZKBAE	BCML311045G	C:CERAMIC M/L (1608) TAPE	0.1UF 16V K B	C026
AT384ZKBAE	BCML311045G	C:CERAMIC M/L (1608) TAPE	0.1UF 16V K B	C027
AT384ZKBAE	BCML311045G	C:CERAMIC M/L (1608) TAPE	0.1UF 16V K B	C028
AT384ZKBAE	BCML311045G	C:CERAMIC M/L (1608) TAPE	0.1UF 16V K B	C029
AT384ZKBAE	BCML311045G	C:CERAMIC M/L (1608) TAPE	0.1UF 16V K B	C032
AT384ZKBAE	BCML311045G	C:CERAMIC M/L (1608) TAPE	0.1UF 16V K B	C033
AT384ZKBAE	BCML311045G	C:CERAMIC M/L (1608) TAPE	0.1UF 16V K B	C034
AT384ZKBAE	BCML311045G	C:CERAMIC M/L (1608) TAPE	0.1UF 16V K B	C035
AT384ZKBAE	BCML311045G	C:CERAMIC M/L (1608) TAPE	0.1UF 16V K B	C051
AT384ZKBAE	BCML311045G	C:CERAMIC M/L (1608) TAPE	0.1UF 16V K B	C059
AT384ZKBAE	BCML311045G	C:CERAMIC M/L (1608) TAPE	0.1UF 16V K B	C063
AT384ZKBAE	BCML311045G	C:CERAMIC M/L (1608) TAPE	0.1UF 16V K B	C064
AT384ZKBAE	BCML311045G	C:CERAMIC M/L (1608) TAPE	0.1UF 16V K B	C101
AT384ZKBAE	BCML311045G	C:CERAMIC M/L (1608) TAPE	0.1UF 16V K B	C103
AT384ZKBAE	BCML311045G	C:CERAMIC M/L (1608) TAPE	0.1UF 16V K B	C104
AT384ZKBAE	BCML311045G	C:CERAMIC M/L (1608) TAPE	0.1UF 16V K B	C105
AT384ZKBAE	BCML311045G	C:CERAMIC M/L (1608) TAPE	0.1UF 16V K B	C110
AT384ZKBAE	BCML311045G	C:CERAMIC M/L (1608) TAPE	0.1UF 16V K B	C112
AT384ZKBAE	BCML311045G	C:CERAMIC M/L (1608) TAPE	0.1UF 16V K B	C215
AT384ZKBAE	BCML311045G	C:CERAMIC M/L (1608) TAPE	0.1UF 16V K B	C220
AT384ZKBAE	BCML311045G	C:CERAMIC M/L (1608) TAPE	0.1UF 16V K B	C226
AT384ZKBAE	BCML311045G	C:CERAMIC M/L (1608) TAPE	0.1UF 16V K B	C233
AT384ZKBAE	BCML311045G	C:CERAMIC M/L (1608) TAPE	0.1UF 16V K B	C241
AT384ZKBAE	BCML311045G	C:CERAMIC M/L (1608) TAPE	0.1UF 16V K B	C245



AT384ZKBAE	BCML811035G	C:CERAMIC M/L (1608) TAPE	0.01UF 50V K B	C217
AT384ZKBAE	BCML811035G	C:CERAMIC M/L (1608) TAPE	0.01UF 50V K B	C218
AT384ZKBAE	BCML811035G	C:CERAMIC M/L (1608) TAPE	0.01UF 50V K B	C221
AT384ZKBAE	BCML811035G	C:CERAMIC M/L (1608) TAPE	0.01UF 50V K B	C225
AT384ZKBAE	BCML811035G	C:CERAMIC M/L (1608) TAPE	0.01UF 50V K B	C229
AT384ZKBAE	BCML811035G	C:CERAMIC M/L (1608) TAPE	0.01UF 50V K B	C232
AT384ZKBAE	BCML811035G	C:CERAMIC M/L (1608) TAPE	0.01UF 50V K B	C242
AT384ZKBAE	BCML811035G	C:CERAMIC M/L (1608) TAPE	0.01UF 50V K B	C255
AT384ZKBAE	BCML811035G	C:CERAMIC M/L (1608) TAPE	0.01UF 50V K B	C261
AT384ZKBAE	BCML811035G	C:CERAMIC M/L (1608) TAPE	0.01UF 50V K B	C262
AT384ZKBAE	BCML811035G	C:CERAMIC M/L (1608) TAPE	0.01UF 50V K B	C301
AT384ZKBAE	BCML811035G	C:CERAMIC M/L (1608) TAPE	0.01UF 50V K B	C302
AT384ZKBAE	BCML811035G	C:CERAMIC M/L (1608) TAPE	0.01UF 50V K B	C306
AT384ZKBAE	BCML811035G	C:CERAMIC M/L (1608) TAPE	0.01UF 50V K B	C307
AT384ZKBAE	BCML811035G	C:CERAMIC M/L (1608) TAPE	0.01UF 50V K B	C309
AT384ZKBAE	BCML811035G	C:CERAMIC M/L (1608) TAPE	0.01UF 50V K B	C310
AT384ZKBAE	BCML811035G	C:CERAMIC M/L (1608) TAPE	0.01UF 50V K B	C312
AT384ZKBAE	BCML811035G	C:CERAMIC M/L (1608) TAPE	0.01UF 50V K B	C317
AT384ZKBAE	BCML811035G	C:CERAMIC M/L (1608) TAPE	0.01UF 50V K B	C318
AT384ZKBAE	BCML811035G	C:CERAMIC M/L (1608) TAPE	0.01UF 50V K B	C331
AT384ZKBAE	BCML811035G	C:CERAMIC M/L (1608) TAPE	0.01UF 50V K B	C332
AT384ZKBAE	BCML811035G	C:CERAMIC M/L (1608) TAPE	0.01UF 50V K B	C341
AT384ZKBAE	BCML811035G	C:CERAMIC M/L (1608) TAPE	0.01UF 50V K B	C344
AT384ZKBAE	BCML811035G	C:CERAMIC M/L (1608) TAPE	0.01UF 50V K B	C354
AT384ZKBAE	BCML812235G	C:CERAMIC M/L (1608) TAPE	0.022UF 50V K B	C339
AT384ZKBAE	BCML814725G	C:CERAMIC M/L (1608) TAPE	0.0047UF 50V K B	C061
AT384ZKBAE	BCML814725G	C:CERAMIC M/L (1608) TAPE	0.0047UF 50V K B	C102
AT384ZKBAE	BCML814725G	C:CERAMIC M/L (1608) TAPE	0.0047UF 50V K B	C222
AT384ZKBAE	BCML814725G	C:CERAMIC M/L (1608) TAPE	0.0047UF 50V K B	C324
AT384ZKBAE	BCML814735G	C:CERAMIC M/L (1608) TAPE	0.047UF 50V K B	C046
AT384ZKBAE	BCML814735G	C:CERAMIC M/L (1608) TAPE	0.047UF 50V K B	C108
AT384ZKBAE	BCML814735G	C:CERAMIC M/L (1608) TAPE	0.047UF 50V K B	C111
AT384ZKBAE	BCML901055G	C:CERAMIC M/L (1608) TAPE	1UF 6.3V K B	C008
AT384ZKBAE	BCML901055G	C:CERAMIC M/L (1608) TAPE	1UF 6.3V K B	C041
AT384ZKBAE	BCML901055G	C:CERAMIC M/L (1608) TAPE	1UF 6.3V K B	C047
AT384ZKBAE	BCML901055G	C:CERAMIC M/L (1608) TAPE	1UF 6.3V K B	C049
AT384ZKBAE	BCML901055G	C:CERAMIC M/L (1608) TAPE	1UF 6.3V K B	C231
AT384ZKBAE	BCML901055G	C:CERAMIC M/L (1608) TAPE	1UF 6.3V K B	C249
AT384ZKBAE	BCML901055G	C:CERAMIC M/L (1608) TAPE	1UF 6.3V K B	C348
AT384ZKBAE	BCML901055G	C:CERAMIC M/L (1608) TAPE	1UF 6.3V K B	C409
AT384ZKBAE	BCML901055G	C:CERAMIC M/L (1608) TAPE	1UF 6.3V K B	C411
AT384ZKBAE	BCMM811014G	C:CERAMIC M/L (1608) TAPE	100PF 50V J CH	C201
AT384ZKBAE	BCMM811014G	C:CERAMIC M/L (1608) TAPE	100PF 50V J CH	C208
AT384ZKBAE	BCMM811014G	C:CERAMIC M/L (1608) TAPE	100PF 50V J CH	C209

AT384ZKBAE	BCMM811014G	C:CERAMIC M/L (1608) TAPE	100PF 50V J CH	C213
AT384ZKBAE	BCMM811014G	C:CERAMIC M/L (1608) TAPE	100PF 50V J CH	C300
AT384ZKBAE	BCMM811014G	C:CERAMIC M/L (1608) TAPE	100PF 50V J CH	C326
AT384ZKBAE	BCMM811504G	C:CERAMIC M/L (1608) TAPE	15PF 50V J CH	C001
AT384ZKBAE	BCMM811504G	C:CERAMIC M/L (1608) TAPE	15PF 50V J CH	C200
AT384ZKBAE	BCMM811504G	C:CERAMIC M/L (1608) TAPE	15PF 50V J CH	C207
AT384ZKBAE	BCMM811514G	C:CERAMIC M/L (1608) TAPE	150PF 50V J CH	C206
AT384ZKBAE	BCMM811514G	C:CERAMIC M/L (1608) TAPE	150PF 50V J CH	C219
AT384ZKBAE	BCMM811514G	C:CERAMIC M/L (1608) TAPE	150PF 50V J CH	C227
AT384ZKBAE	BCMM811514G	C:CERAMIC M/L (1608) TAPE	150PF 50V J CH	C315
AT384ZKBAE	BCMM811514G	C:CERAMIC M/L (1608) TAPE	150PF 50V J CH	C316
AT384ZKBAE	BCMM811804G	C:CERAMIC M/L (1608) TAPE	18PF 50V J CH	C203
AT384ZKBAE	BCMM811814G	C:CERAMIC M/L (1608) TAPE	180PF 50V J CH	C202
AT384ZKBAE	BCMM811814G	C:CERAMIC M/L (1608) TAPE	180PF 50V J CH	C204
AT384ZKBAE	BCMM812098G	C: CERAMIC M/L (1608) TAPE	2PF 50V B CH	C214
AT384ZKBAE	BCMM812204G	C:CERAMIC M/L (1608) TAPE	22PF 50V J CH	C314
AT384ZKBAE	BCMM812204G	C:CERAMIC M/L (1608) TAPE	22PF 50V J CH	C342
AT384ZKBAE	BCMM812204G	C:CERAMIC M/L (1608) TAPE	22PF 50V J CH	C343
AT384ZKBAE	BCMM812214G	C:CERAMIC M/L (1608) TAPE	220PF 50V J CH	C039
AT384ZKBAE	BCMM812214G	C:CERAMIC M/L (1608) TAPE	220PF 50V J CH	C043
AT384ZKBAE	BCMM812214G	C:CERAMIC M/L (1608) TAPE	220PF 50V J CH	C355
AT384ZKBAE	BCMM812704G	C:CERAMIC M/L (1608) TAPE	27PF 50V J CH	C015
AT384ZKBAE	BCMM812714G	C:CERAMIC M/L (1608) TAPE	270PF 50V J CH	C403
AT384ZKBAE	BCMM812714G	C:CERAMIC M/L (1608) TAPE	270PF 50V J CH	C406
AT384ZKBAE	BCMM813098G	C: CERAMIC M/L (1608) TAPE	3PF 50V B CH	C014
AT384ZKBAE	BCMM813304G	C:CERAMIC M/L (1608) TAPE	33PF 50V J CH	C224
AT384ZKBAE	BCMM813304G	C:CERAMIC M/L (1608) TAPE	33PF 50V J CH	C305
AT384ZKBAE	BCMM813304G	C:CERAMIC M/L (1608) TAPE	33PF 50V J CH	C308
AT384ZKBAE	BCMM813304G	C:CERAMIC M/L (1608) TAPE	33PF 50V J CH	C351
AT384ZKBAE	BCMM813304G	C:CERAMIC M/L (1608) TAPE	33PF 50V J CH	C352
AT384ZKBAE	BCMM813304G	C:CERAMIC M/L (1608) TAPE	33PF 50V J CH	C353
AT384ZKBAE	BCMM813314G	C:CERAMIC M/L (1608) TAPE	330PF 50V J CH	C251
AT384ZKBAE	BCMM813904G	C:CERAMIC M/L (1608) TAPE	39PF 50V J CH	C005
AT384ZKBAE	BCMM813904G	C:CERAMIC M/L (1608) TAPE	39PF 50V J CH	C329
AT384ZKBAE	BCMM814098G	C:CERAMIC M/L (1608) TAPE	4PF 50V B CH	C327
AT384ZKBAE	BCMM814704G	C:CERAMIC M/L (1608) TAPE	47PF 50V J CH	C036
AT384ZKBAE	BCMM814704G	C:CERAMIC M/L (1608) TAPE	47PF 50V J CH	C254
AT384ZKBAE	BCMM814714G	C:CERAMIC M/L (1608) TAPE	470PF 50V J CH	C037
AT384ZKBAE	BCMM814714G	C:CERAMIC M/L (1608) TAPE	470PF 50V J CH	C401
AT384ZKBAE	BCMM814714G	C:CERAMIC M/L (1608) TAPE	470PF 50V J CH	C402
AT384ZKBAE	BCMM814714G	C:CERAMIC M/L (1608) TAPE	470PF 50V J CH	C404
AT384ZKBAE	BCMM815091G	C: CERAMIC M/L (1608) TAPE	5PF 50V C CH	C313
AT384ZKBAE	BCMM815098G	C: CERAMIC M/L (1608) TAPE	5PF 50V B CH	C328
AT384ZKBAE	BCMM816814G	C:CERAMIC M/L (1608) TAPE	680PF 50V J CH	C042

AT384ZKBAE	BCMM816814G	C:CERAMIC M/L (1608) TAPE	680PF 50V J CH	C211
AT384ZKBAE	BCMM816814G	C:CERAMIC M/L (1608) TAPE	680PF 50V J CH	C212
AT384ZKBAE	BCMM817092G	C: CERAMIC M/L (1608) TAPE	7PF 50V D CH	C025
AT384ZKBAE	BCMM817092G	C: CERAMIC M/L (1608) TAPE	7PF 50V D CH	C320
AT384ZKBAE	BCMM817092G	C: CERAMIC M/L (1608) TAPE	7PF 50V D CH	C325
AT384ZKBAE	BCMM817092G	C: CERAMIC M/L (1608) TAPE	7PF 50V D CH	C350
AT384ZKBAE	BCMM818092G	C: CERAMIC M/L (1608) TAPE	8PF 50V D CH	C223
AT384ZKBAE	BCMM818092G	C: CERAMIC M/L (1608) TAPE	8PF 50V D CH	C330
AT384ZKBAE	BCMM818204G	C:CERAMIC M/L (1608) TAPE	82PF 50V J CH	C228
AT384ZKBAE	BCMM818214G	C:CERAMIC M/L (1608) TAPE	820PF 50V J CH	C252
AT384ZKBAE	BCSH312296G	C:TANTALUM CHIP TAPE	2.2UF 16V M C-122 TAPE	C323
AT384ZKBAE	BCSH662286G	CAPACITOR:TANTALUM CHIP	0.22UF 35V M C-122 TAPE	C322
AT384ZKBAE	BDAG1268001	DIODE	KDS226-RTK/P	D401
AT384ZKBAE	BDAG1269001	DIODE	KDS114E-RTK/P	D001
AT384ZKBAE	BDAG1269001	DIODE	KDS114E-RTK/P	D002
AT384ZKBAE	BDAG1269001	DIODE	KDS114E-RTK/P	D011
AT384ZKBAE	BDAG1269001	DIODE	KDS114E-RTK/P	D201
AT384ZKBAE	BDAG1280001	DIODE:VARICAP	HVU307 TRU-E	D101
AT384ZKBAE	BDAG1280001	DIODE:VARICAP	HVU307 TRU-E	D302
AT384ZKBAE	BDAG1280001	DIODE:VARICAP	HVU307 TRU-E	D304
AT384ZKBAE	BDAG1280001	DIODE:VARICAP	HVU307 TRU-E	D305
AT384ZKBAE	BDAG1349001	DIODE	GD 1N4003-A2	D209
AT384ZKBAE	BDAG1355001	DIODE	SDB30A40	D301
AT384ZKBAE	BDAG1414001	DIODE	DA-1414 LL34LL4148	D004
AT384ZKBAE	BDAG1414001	DIODE	DA-1414 LL34LL4148	D005
AT384ZKBAE	BDAG1414001	DIODE	DA-1414 LL34LL4148	D006
AT384ZKBAE	BDAG1414001	DIODE	DA-1414 LL34LL4148	D007
AT384ZKBAE	BDAG1414001	DIODE	DA-1414 LL34LL4148	D009
AT384ZKBAE	BDAG1414001	DIODE	DA-1414 LL34LL4148	D013
AT384ZKBAE	BDAG1414001	DIODE	DA-1414 LL34LL4148	D204
AT384ZKBAE	BDAG1414001	DIODE	DA-1414 LL34LL4148	D208
AT384ZKBAE	BDAG1414001	DIODE	DA-1414 LL34LL4148	D211
AT384ZKBAE	BDAG1414001	DIODE	DA-1414 LL34LL4148	D402
AT384ZKBAE	BDAG1423002	DIODE:ZENER	HZK5C	D202
AT384ZKBAE	BDAG1572016	DIODE:ZENER	MM3Z3V0B	D205
AT384ZKBAE	BDAG1590001	DIODE	BAR43SST(RH)	D008
AT384ZKBAE	BDBL0941112	TRANSISTOR	DB-1212 2SC941TM-Y(TPE2_F)	Q201
AT384ZKBAE	BDBN1259001	TRANSISTOR	DB-1259 KTC3875S-GR-RTK/P TAPE	Q005
AT384ZKBAE	BDBN1259001	TRANSISTOR	DB-1259 KTC3875S-GR-RTK/P TAPE	Q006
AT384ZKBAE	BDBN1259001	TRANSISTOR	DB-1259 KTC3875S-GR-RTK/P TAPE	Q009
AT384ZKBAE	BDBN1259001	TRANSISTOR	DB-1259 KTC3875S-GR-RTK/P TAPE	Q013
AT384ZKBAE	BDBN1259001	TRANSISTOR	DB-1259 KTC3875S-GR-RTK/P TAPE	Q214
AT384ZKBAE	BDBN1259001	TRANSISTOR	DB-1259 KTC3875S-GR-RTK/P TAPE	Q307
AT384ZKBAE	BDBN1259001	TRANSISTOR	DB-1259 KTC3875S-GR-RTK/P TAPE	Q401

AT384ZKBAE	BDBN1290001	TRANSISTOR	DB-1290 LMBT3906LT1G	Q218
AT384ZKBAE	BDBN1290001	TRANSISTOR	DB-1290 LMBT3906LT1G	Q306
AT384ZKBAE	BDBN1326001	TRANSISTOR	DB-1326 MMBTSC2714Y	Q001
AT384ZKBAE	BDBN1326001	TRANSISTOR	DB-1326 MMBTSC2714Y	Q004
AT384ZKBAE	BDBN1326001	TRANSISTOR	DB-1326 MMBTSC2714Y	Q301
AT384ZKBAE	BDBN1327001	TRANSISTOR	DB-1327 MMBTSC4226RW	Q202
AT384ZKBAE	BDBN1327001	TRANSISTOR	DB-1327 MMBTSC4226RW	Q302
AT384ZKBAE	BDBN1327001	TRANSISTOR	DB-1327 MMBTSC4226RW	Q303
AT384ZKBAE	BDBN1327001	TRANSISTOR	DB-1327 MMBTSC4226RW	Q308
AT384ZKBAE	BDBN1328001	TRANSISTOR	DB-1328 MMBTRA105SS	Q213
AT384ZKBAE	BDBN1329001	TRANSISTOR	DB-1329 MMBTRC119SS	Q012
AT384ZKBAE	BDBN1329001	TRANSISTOR	DB-1329 MMBTRC119SS	Q101
AT384ZKBAE	BDBN1329001	TRANSISTOR	DB-1329 MMBTRC119SS	Q103
AT384ZKBAE	BDBN1329001	TRANSISTOR	DB-1329 MMBTRC119SS	Q208
AT384ZKBAE	BDBN1329001	TRANSISTOR	DB-1329 MMBTRC119SS	Q216
AT384ZKBAE	BDBN1329001	TRANSISTOR	DB-1329 MMBTRC119SS	Q305
AT384ZKBAE	BDBN1330001	TRANSISTOR	DB-1330 KTC3209-Y-AT/P	Q217
AT384ZKBAE	BDBN1331001	TRANSISTOR	DB-1331 KTD1304-RTK/P	Q007
AT384ZKBAE	BDBN1331001	TRANSISTOR	DB-1331 KTD1304-RTK/P	Q011
AT384ZKBAE	BDBN1331001	TRANSISTOR	DB-1331 KTD1304-RTK/P	Q209
AT384ZKBAE	BDBN1331001	TRANSISTOR	DB-1331 KTD1304-RTK/P	Q304
AT384ZKBAE	BDCK0210303	FIELD EFFECT TRANSISTOR	DC-310 2SK210-GR(TE85L_F)	Q002
AT384ZKBAE	BDCK0210303	FIELD EFFECT TRANSISTOR	DC-310 2SK210-GR(TE85L_F)	Q003
AT384ZKBAE	BDEG4463003	INTEGRATED CIRCUIT	NJM12904R-TE1-#ZZZB	IC002
AT384ZKBAE	BDEG4463003	INTEGRATED CIRCUIT	NJM12904R-TE1-#ZZZB	IC201
AT384ZKBAE	BDEG4463003	INTEGRATED CIRCUIT	NJM12904R-TE1-#ZZZB	IC401
AT384ZKBAE	BDEG4680003	INTEGRATED CIRCUIT	XC6109C43ANR	IC303
AT384ZKBAE	BDEG5115001	INTEGRATED CIRCUIT	M38D24G4FP	IC301
AT384ZKBAE	BDEG5165003	INTEGRATED CIRCUIT	MCD2926	IC305
AT384ZKBAE	BDEG5186003	INTEGRATED CIRCUIT	MC3361	IC101
AT384ZKBAE	BDEG5191003	INTEGRATED CIRCUIT	FM24C02A-SO-T-G	IC302
AT384ZKBAE	BDEG5193003	INTEGRATED CIRCUIT	UR6225L-50-AB3-C-R	IC304
AT384ZKBAE	BFLG0852001	FILTER:CERAMIC	FL-852 LTS455HTW	FT002
AT384ZKBAE	BFLG1087001	FILTER:CRYSTAL	FL-1087 10M07AZ	FT001
AT384ZKBAE	BJKG1249003	JACK	JK-1249 IMSA-9210B-1-03Z058-PT1	J301
AT384ZKBAE	BJKG1310001	JACK:EARPHONE	JK-1310 PJ-305C	J001
AT384ZKBAE	BLBG1276001	COIL	LB-1276	L004
AT384ZKBAE	BLBG1285001	COIL	LB-1285	L001
AT384ZKBAE	BLBG1286001	COIL	LB-1286	L101
AT384ZKBAE	BLBH1153001	COIL	LB-1153 KS2485NC	L002
AT384ZKBAE	BLBH1239001	COIL	LB-1239 KS2585N	L003
AT384ZKBAE	BLBH1272001	COIL	LB-1272 7MK4A035A	L006
AT384ZKBAE	BLBH1272001	COIL	LB-1272 7MK4A035A	L007
AT384ZKBAE	BLDH0252001	COIL	LD-252 SZFDLLD-252	L300



AT384ZKBAE	BLEG0600001	COIL	LE-0600	L205
AT384ZKBAE	BLEG0600001	COIL	LE-0600	L208
AT384ZKBAE	BLEH0475001	COIL	LE-475 SZFDLLE-475	L201
AT384ZKBAE	BLEH0475001	COIL	LE-475 SZFDLLE-475	L202
AT384ZKBAE	BLEH0475001	COIL	LE-475 SZFDLLE-475	L203
AT384ZKBAE	BLEH0475001	COIL	LE-475 SZFDLLE-475	L204
AT384ZKBAE	BLEH0475001	COIL	LE-475 SZFDLLE-475	L206
AT384ZKBAE	BLZG0194221	INDUCTOR:MOLDED CHIP	LZ-194 MPZ2012S221AT 220	L009
AT384ZKBAE	BLZG0194221	INDUCTOR:MOLDED CHIP	LZ-194 MPZ2012S221AT 220	L010
AT384ZKBAE	BLZG0194221	INDUCTOR:MOLDED CHIP	LZ-194 MPZ2012S221AT 220	L301
AT384ZKBAE	BLZG0194221	INDUCTOR:MOLDED CHIP	LZ-194 MPZ2012S221AT 220	L302
AT384ZKBAE	BLZG0194221	INDUCTOR:MOLDED CHIP	LZ-194 MPZ2012S221AT 220	L307
AT384ZKBAE	BLZG0194221	INDUCTOR:MOLDED CHIP	LZ-194 MPZ2012S221AT 220	L308
AT384ZKBAE	BLZG0207601	INDUCTOR:MOLDED CHIP	LZ-207 MMZ1608Y601BT 600	L209
AT384ZKBAE	BLZG0226100	INDUCTOR:MOLDED CHIP	LZ-226 SGMI1608K100K T	L005
AT384ZKBAE	BLZG0226108	INDUCTOR:MOLDED CHIP	LZ-226 SGMI1608GR10K T	L305
AT384ZKBAE	BLZG0226108	INDUCTOR:MOLDED CHIP	LZ-226 SGMI1608GR10K T	L306
AT384ZKBAE	BLZG0226338	INDUCTOR:MOLDED CHIP	LZ-226 SGMI1608GR33K T	L211
AT384ZKBAE	BLZG0267478	INDUCTOR:MOLDED CHIP	LZ-267 NLV25T-R47J-PF	L207
AT384ZKBAE	BLZG0278338	INDUCTOR:MOLDED CHIP	LZ-278 LLQ2012-FR33J 330NH	L304
AT384ZKBAE	BLZG0278398	INDUCTOR:MOLDED CHIP	LZ-278 LLQ2012-FR39J 390NH	L303
AT384ZKBAE	BPAG0456AA1	PCB:MAIN	PA-456AA 1/7	B001
AT384ZKBAE	BPGG0185001	PLUG	PG-185 IMSA-9215H-T	PG301
AT384ZKBAE	BQXG0975001	CRYSTAL	QX-975 10.24MHZ	X301
AT384ZKBAE	BQXG0982001	CRYSTAL	QX-982 3.6864MHZ	X302
AT384ZKBAE	BRFC010004G	R:CARBON FIXED CHIP(2125)	0 1/10W J TAPE	R280
AT384ZKBAE	BRFC121014G	R:CARBON FIXED CHIP(5025)	100 1/2W J TAPE	R276
AT384ZKBAE	BRFC128204G	R:CARBON FIXED CHIP(5025)	82 1/2W J TAPE	R275
AT384ZKBAE	BRFC160004G	R:CARBON FIXED CHIP(1608)	0 1/16W J TAPE	R029
AT384ZKBAE	BRFC160004G	R:CARBON FIXED CHIP(1608)	0 1/16W J TAPE	R054
AT384ZKBAE	BRFC160004G	R:CARBON FIXED CHIP(1608)	0 1/16W J TAPE	R088
AT384ZKBAE	BRFC160004G	R:CARBON FIXED CHIP(1608)	0 1/16W J TAPE	R089
AT384ZKBAE	BRFC160004G	R:CARBON FIXED CHIP(1608)	0 1/16W J TAPE	R100
AT384ZKBAE	BRFC160004G	R:CARBON FIXED CHIP(1608)	0 1/16W J TAPE	R111
AT384ZKBAE	BRFC160004G	R:CARBON FIXED CHIP(1608)	0 1/16W J TAPE	R115
AT384ZKBAE	BRFC160004G	R:CARBON FIXED CHIP(1608)	0 1/16W J TAPE	R116
AT384ZKBAE	BRFC160004G	R:CARBON FIXED CHIP(1608)	0 1/16W J TAPE	R122
AT384ZKBAE	BRFC160004G	R:CARBON FIXED CHIP(1608)	0 1/16W J TAPE	R269
AT384ZKBAE	BRFC160004G	R:CARBON FIXED CHIP(1608)	0 1/16W J TAPE	R316
AT384ZKBAE	BRFC160004G	R:CARBON FIXED CHIP(1608)	0 1/16W J TAPE	R321
AT384ZKBAE	BRFC160004G	R:CARBON FIXED CHIP(1608)	0 1/16W J TAPE	R323
AT384ZKBAE	BRFC160004G	R:CARBON FIXED CHIP(1608)	0 1/16W J TAPE	R326
AT384ZKBAE	BRFC160004G	R:CARBON FIXED CHIP(1608)	0 1/16W J TAPE	R329
AT384ZKBAE	BRFC160004G	R:CARBON FIXED CHIP(1608)	0 1/16W J TAPE	R330





AT384ZKBAE	BRFC161044G	R:CARBON FIXED CHIP(1608)	100K 1/16W J TAPE	R247
AT384ZKBAE	BRFC161044G	R:CARBON FIXED CHIP(1608)	100K 1/16W J TAPE	R248
AT384ZKBAE	BRFC161044G	R:CARBON FIXED CHIP(1608)	100K 1/16W J TAPE	R335
AT384ZKBAE	BRFC161044G	R:CARBON FIXED CHIP(1608)	100K 1/16W J TAPE	R346
AT384ZKBAE	BRFC161044G	R:CARBON FIXED CHIP(1608)	100K 1/16W J TAPE	R357
AT384ZKBAE	BRFC161054G	R:CARBON FIXED CHIP(1608)	1M 1/16W J TAPE	R069
AT384ZKBAE	BRFC161054G	R:CARBON FIXED CHIP(1608)	1M 1/16W J TAPE	R103
AT384ZKBAE	BRFC161054G	R:CARBON FIXED CHIP(1608)	1M 1/16W J TAPE	R238
AT384ZKBAE	BRFC161054G	R:CARBON FIXED CHIP(1608)	1M 1/16W J TAPE	R252
AT384ZKBAE	BRFC161054G	R:CARBON FIXED CHIP(1608)	1M 1/16W J TAPE	R331
AT384ZKBAE	BRFC161504G	R:CARBON FIXED CHIP(1608)	15 1/16W J TAPE	R207
AT384ZKBAE	BRFC161524G	R:CARBON FIXED CHIP(1608)	1.5K 1/16W J TAPE	R003
AT384ZKBAE	BRFC161524G	R:CARBON FIXED CHIP(1608)	1.5K 1/16W J TAPE	R005
AT384ZKBAE	BRFC161524G	R:CARBON FIXED CHIP(1608)	1.5K 1/16W J TAPE	R008
AT384ZKBAE	BRFC161524G	R:CARBON FIXED CHIP(1608)	1.5K 1/16W J TAPE	R031
AT384ZKBAE	BRFC161524G	R:CARBON FIXED CHIP(1608)	1.5K 1/16W J TAPE	R077
AT384ZKBAE	BRFC161524G	R:CARBON FIXED CHIP(1608)	1.5K 1/16W J TAPE	R113
AT384ZKBAE	BRFC161524G	R:CARBON FIXED CHIP(1608)	1.5K 1/16W J TAPE	R267
AT384ZKBAE	BRFC161524G	R:CARBON FIXED CHIP(1608)	1.5K 1/16W J TAPE	R318
AT384ZKBAE	BRFC161534G	R:CARBON FIXED CHIP(1608)	15K 1/16W J TAPE	R027
AT384ZKBAE	BRFC161544G	R:CARBON FIXED CHIP(1608)	150K 1/16W J TAPE	R067
AT384ZKBAE	BRFC161544G	R:CARBON FIXED CHIP(1608)	150K 1/16W J TAPE	R071
AT384ZKBAE	BRFC161824G	R:CARBON FIXED CHIP(1608)	1.8K 1/16W J TAPE	R277
AT384ZKBAE	BRFC161824G	R:CARBON FIXED CHIP(1608)	1.8K 1/16W J TAPE	R279
AT384ZKBAE	BRFC161834G	R:CARBON FIXED CHIP(1608)	18K 1/16W J TAPE	R265
AT384ZKBAE	BRFC162204G	R:CARBON FIXED CHIP(1608)	22 1/16W J TAPE	R039
AT384ZKBAE	BRFC162204G	R:CARBON FIXED CHIP(1608)	22 1/16W J TAPE	R217
AT384ZKBAE	BRFC162214G	R:CARBON FIXED CHIP(1608)	220 1/16W J TAPE	R018
AT384ZKBAE	BRFC162214G	R:CARBON FIXED CHIP(1608)	220 1/16W J TAPE	R026
AT384ZKBAE	BRFC162214G	R:CARBON FIXED CHIP(1608)	220 1/16W J TAPE	R035
AT384ZKBAE	BRFC162214G	R:CARBON FIXED CHIP(1608)	220 1/16W J TAPE	R258
AT384ZKBAE	BRFC162214G	R:CARBON FIXED CHIP(1608)	220 1/16W J TAPE	R302
AT384ZKBAE	BRFC162214G	R:CARBON FIXED CHIP(1608)	220 1/16W J TAPE	R306
AT384ZKBAE	BRFC162214G	R:CARBON FIXED CHIP(1608)	220 1/16W J TAPE	R307
AT384ZKBAE	BRFC162214G	R:CARBON FIXED CHIP(1608)	220 1/16W J TAPE	R308
AT384ZKBAE	BRFC162214G	R:CARBON FIXED CHIP(1608)	220 1/16W J TAPE	R410
AT384ZKBAE	BRFC162224G	R:CARBON FIXED CHIP(1608)	2.2K 1/16W J TAPE	R001
AT384ZKBAE	BRFC162224G	R:CARBON FIXED CHIP(1608)	2.2K 1/16W J TAPE	R004
AT384ZKBAE	BRFC162224G	R:CARBON FIXED CHIP(1608)	2.2K 1/16W J TAPE	R028
AT384ZKBAE	BRFC162224G	R:CARBON FIXED CHIP(1608)	2.2K 1/16W J TAPE	R038
AT384ZKBAE	BRFC162224G	R:CARBON FIXED CHIP(1608)	2.2K 1/16W J TAPE	R060
AT384ZKBAE	BRFC162224G	R:CARBON FIXED CHIP(1608)	2.2K 1/16W J TAPE	R110
AT384ZKBAE	BRFC162224G	R:CARBON FIXED CHIP(1608)	2.2K 1/16W J TAPE	R253
AT384ZKBAE	BRFC162224G	R:CARBON FIXED CHIP(1608)	2.2K 1/16W J TAPE	R262

AT384ZKBAE	BRFC162224G	R:CARBON FIXED CHIP(1608)	2.2K 1/16W J TAPE	R353
AT384ZKBAE	BRFC162224G	R:CARBON FIXED CHIP(1608)	2.2K 1/16W J TAPE	R404
AT384ZKBAE	BRFC162224G	R:CARBON FIXED CHIP(1608)	2.2K 1/16W J TAPE	R408
AT384ZKBAE	BRFC162234G	R:CARBON FIXED CHIP(1608)	22K 1/16W J TAPE	R309
AT384ZKBAE	BRFC162244G	R:CARBON FIXED CHIP(1608)	220K 1/16W J TAPE	R068
AT384ZKBAE	BRFC162244G	R:CARBON FIXED CHIP(1608)	220K 1/16W J TAPE	R256
AT384ZKBAE	BRFC162244G	R:CARBON FIXED CHIP(1608)	220K 1/16W J TAPE	R257
AT384ZKBAE	BRFC162244G	R:CARBON FIXED CHIP(1608)	220K 1/16W J TAPE	R261
AT384ZKBAE	BRFC162244G	R:CARBON FIXED CHIP(1608)	220K 1/16W J TAPE	R334
AT384ZKBAE	BRFC162294G	R:CARBON FIXED CHIP(1608)	2.2 1/16W J TAPE	R084
AT384ZKBAE	BRFC162714G	R:CARBON FIXED CHIP(1608)	270 1/16W J TAPE	R014
AT384ZKBAE	BRFC162714G	R:CARBON FIXED CHIP(1608)	270 1/16W J TAPE	R015
AT384ZKBAE	BRFC162724G	R:CARBON FIXED CHIP(1608)	2.7K 1/16W J TAPE	R237
AT384ZKBAE	BRFC163304G	R:CARBON FIXED CHIP(1608)	33 1/16W J TAPE	R209
AT384ZKBAE	BRFC163314G	R:CARBON FIXED CHIP(1608)	330 1/16W J TAPE	R033
AT384ZKBAE	BRFC163314G	R:CARBON FIXED CHIP(1608)	330 1/16W J TAPE	R214
AT384ZKBAE	BRFC163324G	R:CARBON FIXED CHIP(1608)	3.3K 1/16W J TAPE	R021
AT384ZKBAE	BRFC163324G	R:CARBON FIXED CHIP(1608)	3.3K 1/16W J TAPE	R043
AT384ZKBAE	BRFC163324G	R:CARBON FIXED CHIP(1608)	3.3K 1/16W J TAPE	R066
AT384ZKBAE	BRFC163324G	R:CARBON FIXED CHIP(1608)	3.3K 1/16W J TAPE	R205
AT384ZKBAE	BRFC163324G	R:CARBON FIXED CHIP(1608)	3.3K 1/16W J TAPE	R212
AT384ZKBAE	BRFC163324G	R:CARBON FIXED CHIP(1608)	3.3K 1/16W J TAPE	R221
AT384ZKBAE	BRFC163324G	R:CARBON FIXED CHIP(1608)	3.3K 1/16W J TAPE	R227
AT384ZKBAE	BRFC163324G	R:CARBON FIXED CHIP(1608)	3.3K 1/16W J TAPE	R281
AT384ZKBAE	BRFC163324G	R:CARBON FIXED CHIP(1608)	3.3K 1/16W J TAPE	R283
AT384ZKBAE	BRFC163324G	R:CARBON FIXED CHIP(1608)	3.3K 1/16W J TAPE	R358
AT384ZKBAE	BRFC163334G	R:CARBON FIXED CHIP(1608)	33K 1/16W J TAPE	R025
AT384ZKBAE	BRFC163334G	R:CARBON FIXED CHIP(1608)	33K 1/16W J TAPE	R083
AT384ZKBAE	BRFC163334G	R:CARBON FIXED CHIP(1608)	33K 1/16W J TAPE	R102
AT384ZKBAE	BRFC163334G	R:CARBON FIXED CHIP(1608)	33K 1/16W J TAPE	R105
AT384ZKBAE	BRFC163334G	R:CARBON FIXED CHIP(1608)	33K 1/16W J TAPE	R409
AT384ZKBAE	BRFC163924G	R:CARBON FIXED CHIP(1608)	3.9K 1/16W J TAPE	R315
AT384ZKBAE	BRFC163924G	R:CARBON FIXED CHIP(1608)	3.9K 1/16W J TAPE	R401
AT384ZKBAE	BRFC164704G	R:CARBON FIXED CHIP(1608)	47 1/16W J TAPE	R042
AT384ZKBAE	BRFC164704G	R:CARBON FIXED CHIP(1608)	47 1/16W J TAPE	R082
AT384ZKBAE	BRFC164704G	R:CARBON FIXED CHIP(1608)	47 1/16W J TAPE	R208
AT384ZKBAE	BRFC164704G	R:CARBON FIXED CHIP(1608)	47 1/16W J TAPE	R300
AT384ZKBAE	BRFC164704G	R:CARBON FIXED CHIP(1608)	47 1/16W J TAPE	R332
AT384ZKBAE	BRFC164714G	R:CARBON FIXED CHIP(1608)	470 1/16W J TAPE	R032
AT384ZKBAE	BRFC164714G	R:CARBON FIXED CHIP(1608)	470 1/16W J TAPE	R057
AT384ZKBAE	BRFC164714G	R:CARBON FIXED CHIP(1608)	470 1/16W J TAPE	R075
AT384ZKBAE	BRFC164714G	R:CARBON FIXED CHIP(1608)	470 1/16W J TAPE	R359
AT384ZKBAE	BRFC164724G	R:CARBON FIXED CHIP(1608)	4.7K 1/16W J TAPE	R055
AT384ZKBAE	BRFC164724G	R:CARBON FIXED CHIP(1608)	4.7K 1/16W J TAPE	R058

AT384ZKBAE	BRFC164724G	R:CARBON FIXED CHIP(1608)	4.7K 1/16W J TAPE	R118
AT384ZKBAE	BRFC164724G	R:CARBON FIXED CHIP(1608)	4.7K 1/16W J TAPE	R218
AT384ZKBAE	BRFC164724G	R:CARBON FIXED CHIP(1608)	4.7K 1/16W J TAPE	R236
AT384ZKBAE	BRFC164724G	R:CARBON FIXED CHIP(1608)	4.7K 1/16W J TAPE	R251
AT384ZKBAE	BRFC164724G	R:CARBON FIXED CHIP(1608)	4.7K 1/16W J TAPE	R313
AT384ZKBAE	BRFC164724G	R:CARBON FIXED CHIP(1608)	4.7K 1/16W J TAPE	R325
AT384ZKBAE	BRFC164724G	R:CARBON FIXED CHIP(1608)	4.7K 1/16W J TAPE	R333
AT384ZKBAE	BRFC164724G	R:CARBON FIXED CHIP(1608)	4.7K 1/16W J TAPE	R338
AT384ZKBAE	BRFC164734G	R:CARBON FIXED CHIP(1608)	47K 1/16W J TAPE	R036
AT384ZKBAE	BRFC164734G	R:CARBON FIXED CHIP(1608)	47K 1/16W J TAPE	R045
AT384ZKBAE	BRFC164734G	R:CARBON FIXED CHIP(1608)	47K 1/16W J TAPE	R063
AT384ZKBAE	BRFC164734G	R:CARBON FIXED CHIP(1608)	47K 1/16W J TAPE	R219
AT384ZKBAE	BRFC164734G	R:CARBON FIXED CHIP(1608)	47K 1/16W J TAPE	R273
AT384ZKBAE	BRFC164734G	R:CARBON FIXED CHIP(1608)	47K 1/16W J TAPE	R284
AT384ZKBAE	BRFC164734G	R:CARBON FIXED CHIP(1608)	47K 1/16W J TAPE	R305
AT384ZKBAE	BRFC164734G	R:CARBON FIXED CHIP(1608)	47K 1/16W J TAPE	R311
AT384ZKBAE	BRFC164734G	R:CARBON FIXED CHIP(1608)	47K 1/16W J TAPE	R345
AT384ZKBAE	BRFC164734G	R:CARBON FIXED CHIP(1608)	47K 1/16W J TAPE	R354
AT384ZKBAE	BRFC164734G	R:CARBON FIXED CHIP(1608)	47K 1/16W J TAPE	R355
AT384ZKBAE	BRFC164744G	R:CARBON FIXED CHIP(1608)	470K 1/16W J TAPE	R056
AT384ZKBAE	BRFC164744G	R:CARBON FIXED CHIP(1608)	470K 1/16W J TAPE	R074
AT384ZKBAE	BRFC164794G	R:CARBON FIXED CHIP(1608)	4.7 1/16W J TAPE	R017
AT384ZKBAE	BRFC165614G	R:CARBON FIXED CHIP(1608)	560 1/16W J TAPE	R213
AT384ZKBAE	BRFC165614G	R:CARBON FIXED CHIP(1608)	560 1/16W J TAPE	R259
AT384ZKBAE	BRFC165624G	R:CARBON FIXED CHIP(1608)	5.6K 1/16W J TAPE	R360
AT384ZKBAE	BRFC165644G	R:CARBON FIXED CHIP(1608)	560K 1/16W J TAPE	R407
AT384ZKBAE	BRFC165644G	R:CARBON FIXED CHIP(1608)	560K 1/16W J TAPE	R413
AT384ZKBAE	BRFC166814G	R:CARBON FIXED CHIP(1608)	680 1/16W J TAPE	R085
AT384ZKBAE	BRFC166814G	R:CARBON FIXED CHIP(1608)	680 1/16W J TAPE	R106
AT384ZKBAE	BRFC166824G	R:CARBON FIXED CHIP(1608)	6.8K 1/16W J TAPE	R009
AT384ZKBAE	BRFC166824G	R:CARBON FIXED CHIP(1608)	6.8K 1/16W J TAPE	R010
AT384ZKBAE	BRFC166824G	R:CARBON FIXED CHIP(1608)	6.8K 1/16W J TAPE	R076
AT384ZKBAE	BRFC166824G	R:CARBON FIXED CHIP(1608)	6.8K 1/16W J TAPE	R079
AT384ZKBAE	BRFC166824G	R:CARBON FIXED CHIP(1608)	6.8K 1/16W J TAPE	R081
AT384ZKBAE	BRFC166824G	R:CARBON FIXED CHIP(1608)	6.8K 1/16W J TAPE	R201
AT384ZKBAE	BRFC166824G	R:CARBON FIXED CHIP(1608)	6.8K 1/16W J TAPE	R356
AT384ZKBAE	BRFC166834G	R:CARBON FIXED CHIP(1608)	68K 1/16W J TAPE	R049
AT384ZKBAE	BRFC166834G	R:CARBON FIXED CHIP(1608)	68K 1/16W J TAPE	R052
AT384ZKBAE	BRFC166834G	R:CARBON FIXED CHIP(1608)	68K 1/16W J TAPE	R317
AT384ZKBAE	BRFC166844G	R:CARBON FIXED CHIP(1608)	680K 1/16W J TAPE	R051
AT384ZKBAE	BRFC166844G	R:CARBON FIXED CHIP(1608)	680K 1/16W J TAPE	R403
AT384ZKBAE	BRFC168204G	R:CARBON FIXED CHIP(1608)	82 1/16W J TAPE	R274
AT384ZKBAE	BRFC168224G	R:CARBON FIXED CHIP(1608)	8.2K 1/16W J TAPE	R382
AT384ZKBAE	BRFC168224G	R:CARBON FIXED CHIP(1608)	8.2K 1/16W J TAPE	R405

AT384ZKBAE	BRFC180004G	R:CARBON FIXED CHIP(3216)	0 1/8W J TAPE	R020
AT384ZKBAE	BRFC180004G	R:CARBON FIXED CHIP(3216)	0 1/8W J TAPE	R030
AT384ZKBAE	BRFC180004G	R:CARBON FIXED CHIP(3216)	0 1/8W J TAPE	R040
AT384ZKBAE	BRFC180004G	R:CARBON FIXED CHIP(3216)	0 1/8W J TAPE	R050
AT384ZKBAE	BRFC180004G	R:CARBON FIXED CHIP(3216)	0 1/8W J TAPE	R080
AT384ZKBAE	BRFC180004G	R:CARBON FIXED CHIP(3216)	0 1/8W J TAPE	R086
AT384ZKBAE	BRFC180004G	R:CARBON FIXED CHIP(3216)	0 1/8W J TAPE	R087
AT384ZKBAE	BRFC180004G	R:CARBON FIXED CHIP(3216)	0 1/8W J TAPE	R117
AT384ZKBAE	BRFC180004G	R:CARBON FIXED CHIP(3216)	0 1/8W J TAPE	R216
AT384ZKBAE	BRFC180004G	R:CARBON FIXED CHIP(3216)	0 1/8W J TAPE	R260
AT384ZKBAE	BRFC180004G	R:CARBON FIXED CHIP(3216)	0 1/8W J TAPE	R340
AT384ZKBAE	BRFC180004G	R:CARBON FIXED CHIP(3216)	0 1/8W J TAPE	R344
AT384ZKBAE	BRFC180004G	R:CARBON FIXED CHIP(3216)	0 1/8W J TAPE	R349
AT384ZKBAE	BRFC180004G	R:CARBON FIXED CHIP(3216)	0 1/8W J TAPE	R351
AT384ZKBAE	BRFC180004G	R:CARBON FIXED CHIP(3216)	0 1/8W J TAPE	R371
AT384ZKBAE	BRFC180004G	R:CARBON FIXED CHIP(3216)	0 1/8W J TAPE	R372
AT384ZKBAE	BRFC180004G	R:CARBON FIXED CHIP(3216)	0 1/8W J TAPE	R400
AT384ZKBAE	BRFC181014G	R:CARBON FIXED CHIP(3216)	100 1/8W J TAPE	R016
AT384ZKBAE	BRFT141034G	R:CARBON AXIAL LEAD (52)	10K 1/4W J TAPE	R314
AT384ZKBAE	BRPA611034G	R:CARBON AXIAL LEAD (26)	10K 1/6W J TAPE	R395
AT384ZKBAE	BRPA611034G	R:CARBON AXIAL LEAD (26)	10K 1/6W J TAPE	R396
AT384ZKBAE	BRPA611034G	R:CARBON AXIAL LEAD (26)	10K 1/6W J TAPE	R397
AT384ZKBAE	BRPA611034G	R:CARBON AXIAL LEAD (26)	10K 1/6W J TAPE	R398
AT384ZKBAE	BRTG0597102	R:SEMI-FIXED	RT-597 PA0630-HA1-B102	RT203
AT384ZKBAE	BRTG0597203	R:SEMI-FIXED	RT-597 PA0630-HA1-B203	RT301
AT384ZKBAE	BRTG0597501	R:SEMI-FIXED	RT-597 PA0630-HA1-B501	RT401
AT384ZKBAE	BRTG0597502	R:SEMI-FIXED	RT-597 PA0630-HA1-B502	RT001
AT384ZKBAE	BRTG0597502	R:SEMI-FIXED	RT-597 PA0630-HA1-B502	RT002
AT384ZKBAE	BRTG0597502	R:SEMI-FIXED	RT-597 PA0630-HA1-B502	RT101
AT384ZKBAE	BRTG0597502	R:SEMI-FIXED	RT-597 PA0630-HA1-B502	RT202
AT384ZKBAE	BRTG0597502	R:SEMI-FIXED	RT-597 PA0630-HA1-B502	RT204
AT384ZKBAE	BRTG0597503	R:SEMI-FIXED	RT-597 PA0630-HA1-B503	RT205
AT384ZKBAE	BTFG0083001	TRANSFORMER:AF CHOKE	TF-083	T301
AT384ZKBAE	BTFG0577001	TRANS	TF-577	T201
AT384ZKBAE	BTPG0138001	TEST PIN	TP-138 IPS-1820-01-PT	TP201
AT384ZKBAM	HSDC3E7852Z	SHIELD PLATE	SPTE	
AT384ZKBAM	HSDC4E6442Z	SHIELD CASE	SPTE	
AT384ZKBAM	HSDC4E6476Z	SHIELD CASE	SPTE	
AT384ZKBAM	HSDC4E6477Z	SHIELD CASE(COMP)	SPTE	
AT384ZKBAM	HSDC4E8735Z	SHIELD PLATE	SPTE	
AT384ZKBAW	CUAH013011G	WIRE	UL 1007 #24 3-130- 3 GRY	W001
AT384ZKBAW	CUAJ013011G	WIRE	UL 1007 #24 3-130- 3 WHT	W002
AT384ZKBAW	CUPJ003511G	WIRE W-004	UL 1571 #26 3- 35- 3 WHT	W003
AT384ZKBBE	BCML811025G	C:CERAMIC M/L (1608) TAPE	0.001UF 50V K B	C559

AT384ZKBBE	BCML811035G	C:CERAMIC M/L (1608) TAPE	0.01UF 50V K B	C551
AT384ZKBBE	BCML811035G	C:CERAMIC M/L (1608) TAPE	0.01UF 50V K B	C552
AT384ZKBBE	BCML811035G	C:CERAMIC M/L (1608) TAPE	0.01UF 50V K B	C553
AT384ZKBBE	BCML811035G	C:CERAMIC M/L (1608) TAPE	0.01UF 50V K B	C554
AT384ZKBBE	BCML811035G	C:CERAMIC M/L (1608) TAPE	0.01UF 50V K B	C557
AT384ZKBBE	BCML811035G	C:CERAMIC M/L (1608) TAPE	0.01UF 50V K B	C558
AT384ZKBBE	BDLG0575001	LIQUID CRYSTAL DISPLAY	DL-575 912-442A-4231	DP551
AT384ZKBBE	BJKG1547001	JACK	JK-1547	J551
AT384ZKBBE	BLZG0207601	INDUCTOR:MOLDED CHIP	LZ-207 MMZ1608Y601BT 600	L551
AT384ZKBBE	BLZG0207601	INDUCTOR:MOLDED CHIP	LZ-207 MMZ1608Y601BT 600	L552
AT384ZKBBE	BLZG0207601	INDUCTOR:MOLDED CHIP	LZ-207 MMZ1608Y601BT 600	L553
AT384ZKBBE	BLZG0207601	INDUCTOR:MOLDED CHIP	LZ-207 MMZ1608Y601BT 600	L554
AT384ZKBBE	BPAG0456AA2	PCB:FRONT	PA-456AA 2/7	B551
AT384ZKBBE	BRFC161024G	R:CARBON FIXED CHIP(1608)	1K 1/16W J TAPE	R553
AT384ZKBBE	BRFC161024G	R:CARBON FIXED CHIP(1608)	1K 1/16W J TAPE	R554
AT384ZKBBE	BRFC163914G	R:CARBON FIXED CHIP(1608)	390 1/16W J TAPE	R551
AT384ZKBBE	BRFC163914G	R:CARBON FIXED CHIP(1608)	390 1/16W J TAPE	R552
AT384ZKBBE	BSWG0877001	SWITCH:TACT	SW-877 TC-1105	S551
AT384ZKBBE	BSWG0877001	SWITCH:TACT	SW-877 TC-1105	S552
AT384ZKBBM	GETC3E6434Z	LIGHTING PLATE	PMMA	
AT384ZKBBM	GHDZ3E6433Z	HOLDER:DISPLAY	ABS	
AT384ZKBBM	HSDC3E6435Z	LCD FRAME	SPTE	
AT384ZKBCE	BPAG0456AA3	PCB:VOL	PA-456AA 3/7	B601
AT384ZKBCE	BRVG1018001	VOLUME	RV-1018 R09711NS-FR25.5A10-A503	VR601
AT384ZKBCE	BWFG3850809	FLAT CABLE	WF-385 3-80-3 5P	FC601
AT384ZKBDE	BPAG0456AA4	PCB:SQ	PA-456AA 4/7	B651
AT384ZKBDE	BRVG1020001	VOLUME	RV-1020 R09711NO-FR25.5A10-B502	VR651
AT384ZKBDE	BWFG3820359	FLAT CABLE	WF-382 3-35-3 2P	FC651
AT384ZKBEE	BCML811035G	C:CERAMIC M/L (1608) TAPE	0.01UF 50V K B	C701
AT384ZKBEE	BCML811035G	C:CERAMIC M/L (1608) TAPE	0.01UF 50V K B	C702
AT384ZKBEE	BPAG0456AA5	PCB:CH SW	PA-456AA 5/7	B701
AT384ZKBEE	BRFC161024G	R:CARBON FIXED CHIP(1608)	1K 1/16W J TAPE	R701
AT384ZKBEE	BRFC161024G	R:CARBON FIXED CHIP(1608)	1K 1/16W J TAPE	R702
AT384ZKBEE	BSRG0476001	SWITCH:ROTARY	SR-476 PS1020-20-FB25A10-00	S701
AT384ZKBEE	BWFG3830509	FLAT CABLE	WF-383 3-50-3 3P	FC701
AT384ZKBFE	BDAG1031001	DIODE:LED	LTST-C190KFKT	D801
AT384ZKBFE	BDAG1031001	DIODE:LED	LTST-C190KFKT	D802
AT384ZKBFE	BPAG0456AA6	PCB:LED L	PA-456AA 6/7	B801
AT384ZKBGE	BDAG1031001	DIODE:LED	LTST-C190KFKT	D851
AT384ZKBGE	BDAG1031001	DIODE:LED	LTST-C190KFKT	D852
AT384ZKBGE	BPAG0456AA7	PCB:LED R	PA-456AA 7/7	B851
AT384ZKBYE	BDBN1332001	TRANSISTOR	DB-1332 KTA1725-O-U/P	Q501
AT384ZKBYE	BDCN0336001	FIELD EFFECT TRANSISTOR	DC-336 RD06HHF1-101	Q502
AT384ZKBYE	BDEG5194001	INTEGRATED CIRCUIT	TDA2003L-TB5-T	IC501



AT384ZKBYE	BDEG5195001	INTEGRATED CIRCUIT	ST7808	IC502
AT384ZKBYE	BJKG1596003	JACK:ANT W/O ACC	JK-1596 M-RM-L 102	J501
AT384ZKBYE	BSPG0474001	SPEAKER	SP-474 YD77A-64F8	SP501
AT384ZKBYE	BWZY1105001	CORD:DC CORD	WZ-1105 1500 W/P	WA501
AT384ZKBYM	GCAS3F2124Z	PANEL:FRONT	ABS	
AT384ZKBYM	GNBC484572Z	KNOB CHANNEL	ABS BLACK	
AT384ZKBYM	GNBY484578Z	KNOB	ABS BLACK	
AT384ZKBYM	HCAS3E6437Z	COVER:TOP	VINY TOP	
AT384ZKBYM	HCAS3E6438Z	COVER:BOTTOM	VINY TOP	
AT384ZKBYM	HCSY3E6849Z	CHASSIS	SECC	
AT384ZKBYM	HETC4F2308Z	SPRING PLATE	**	
AT384ZKBYM	HHSK3E6441Z	HEAT SINK(COMP)	A1070P(AL)	
AT384ZKBYM	HHSK4E6440Z	HEAT SINK	A1070P(AL)	
AT384ZKBYM	HSDC3E8736Z	SHIELD PLATE	C5210(PBSP)	
AT384ZKBYM	HSDC4E6436Z	SHIELD PLATE	SPTE	
AT384ZKBYM	HSDC4E7851Z	SHIELD CASE	SPTE	
AT384ZKBYM	HSDC4E8737Z	SHIELD PLATE	SPTE	
AT384ZKBYM	HSDC4E8739Z	SHIELD CASE	SPTE	
AT384ZKBYM	KDPZ4F2126Z	PLATE:DISPLAY	PC	
AT384ZKBYM	LNBZ4F2125Z	KEY RUBBER	SI	
AT384ZKBYM	MSCW4F2297Z	NUT	**	
AT384ZKBYM	RETC490493A	SPACER	WOOL TACK,0.5T,BLACK	
AT384ZKBYM	RUTC418435Z	WOOL-COATED PAPER:WOOL TACK	WOOL PAPER,100*5*0.3T	
AT384ZKBYM	SSCW133004N	SCREW:FLAT HD +	M3X4 NI	1
AT384ZKBYM	SSCW193006N	SCREW:BIND HD +	M3X6 NI	1
AT384ZKBYM	SSCW193006N	SCREW:BIND HD +	M3X6 NI	2
AT384ZKBYM	SSCW193006N	SCREW:BIND HD +	M3X6 NI	3
AT384ZKBYM	SSCW193008B	SCREW:BIND HD +	M3X8 BLK NI	1
AT384ZKBYM	SSCW193010N	SCREW:BIND HD +	M3X10 NI	1
AT384ZKBYM	SSCW343006B	SCREW:TAPTIGHT BIND HD +	M3X6 BLK NI	1
AT384ZKBYM	SSCW343006N	SCREW:TAPTIGHT BIND HD +	M3X6 NI	1
AT384ZKBYM	SSCW450030N	NUT:HEX	M3 NI	1
AT384ZKBYM	SSCW480030N	NUT:FLANGE	M3 NI	1
AT384ZKBYM	SSCW802608N	SCREW:P TIGHT BIND HD +	D2.6X8 NI	1
AT384ZKBYM	TSTD0150007	TERMINAL:LUG SOLDER	D3.2XL14	
AT384ZKBYM	TSTD0200006	SPRING PLATE:KNOB	D6XL5.2	
AT384ZKXYE	BMKG0656001	MICROPHONE	MK-656 IP743-H010605	MC951
AT384ZKXYM	GMSC480407A	SCREW:MOUNTING	ABS,BLACK	
AT384ZKXYM	HBCT4E6444Z	MOUNTING BRACKET	SPCC	
AT384ZKXYM	HMHG402919Z	HANGER:MICROPHONE	SPCC,1.0T,NI	
AT384ZKXYM	LWSR450288Z	RUBBER WASHER	EPDM	
AT384ZKXYM	SSCW293508N	SCREW:TAPPING ROUND HD +	D3.5X8 NI	1
AT384ZKXYM	SSCW295010N	SCREW:TAPPING ROUND HD +	D5X10 NI	1
AT384ZKXYM	SSCW530035N	WASHER:LOCK	D3.5 NI	1

AT384ZKXYM	SSCW540050N	WASHER:STAR	D5 NI	1
AT384ZKXYM	UTZZ01380ZZ	OWNERS MANUAL	**	
AT384ZKXYM	WBAG4C2090Z	PACKING BAG	**	
AT384ZKXYM	WBAG4C3715Z	PACKING BAG	**	
AT384ZKXYM	WBAG4C3716Z	PACKING BAG	**	
AT384ZKXYM	WBAG4C3719A	PACKING BAG	**	
AT384ZKXYM	WBAG4C3877Z	PACKING BAG	**	
AT384ZKXYM	WBXZ3E8936A	DISPLAY BOX	**	
AT384ZKXYM	WCTZ3E8937Z	SHIPPING CARTON BOX	**	
AT384ZKXYM	WSLV3E8067Z	SLEEVE	**	
AT384ZKXYM	WSLV4E8068Z	SLEEVE	**	
AT384ZKXYM	WSLV4E8069Z	SLEEVE	**	
AT384ZKXYM	WSLV4E8156Z	SLEEVE	**	