



Top Gun Technologies

QUAD-5 Programming Manual

Software Version 6.0.0

Export & US Version



Software Download

www.TopGunTec.com

Copyright Top Gun Technologies 2014-2015

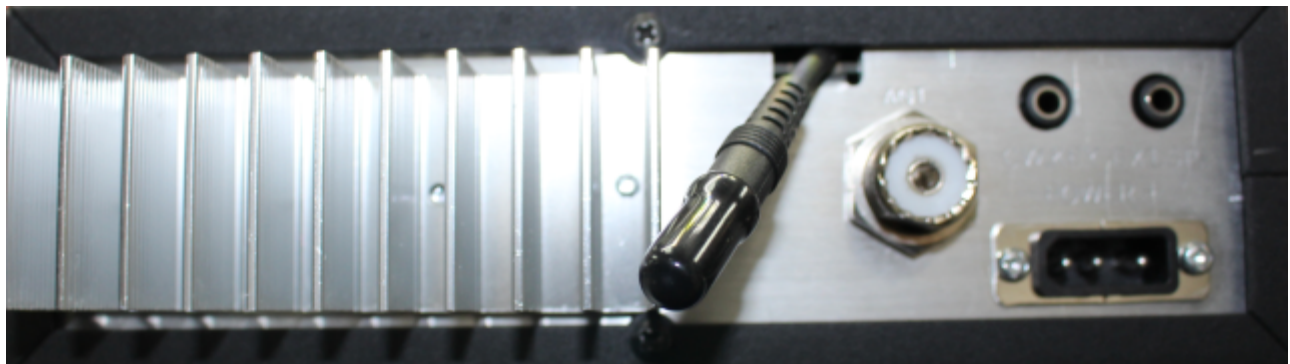
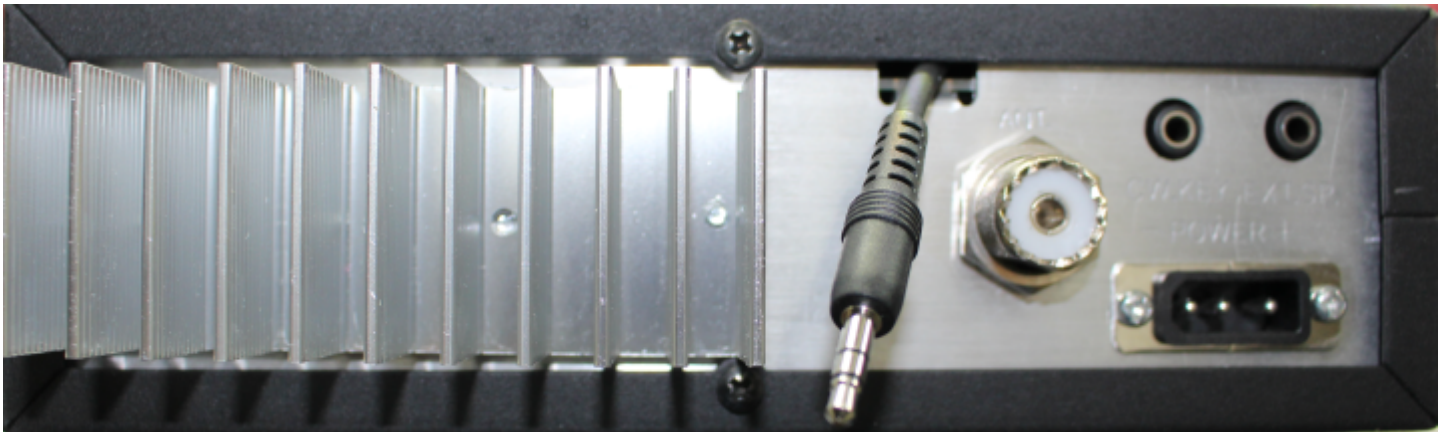
Downloaded from www.cbradio.nl

Top Gun Technologies QUAD-5 Programming Software Manual Ver. 6.0.0



Plug the end of the programming cable with the white connector in here and run cable to front and on the other side of the main circuit board and out notch in chassis at the rear of radio. Used the supplied plastic cap to protect the connector.

Programming Cable Port



Software Download

www.TopGunTec.com

Copyright Top Gun Technologies 2014-2015

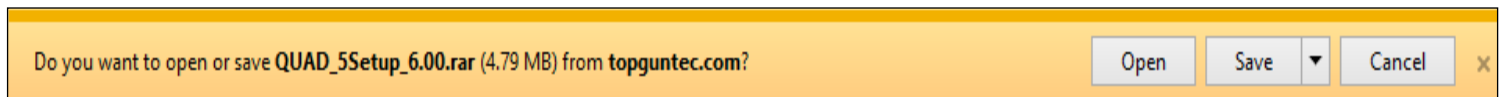
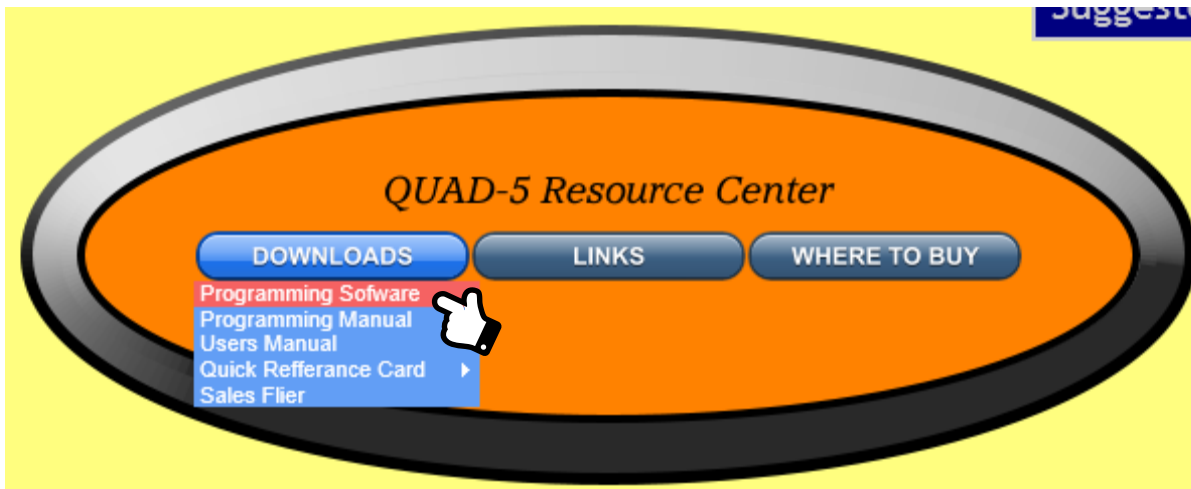
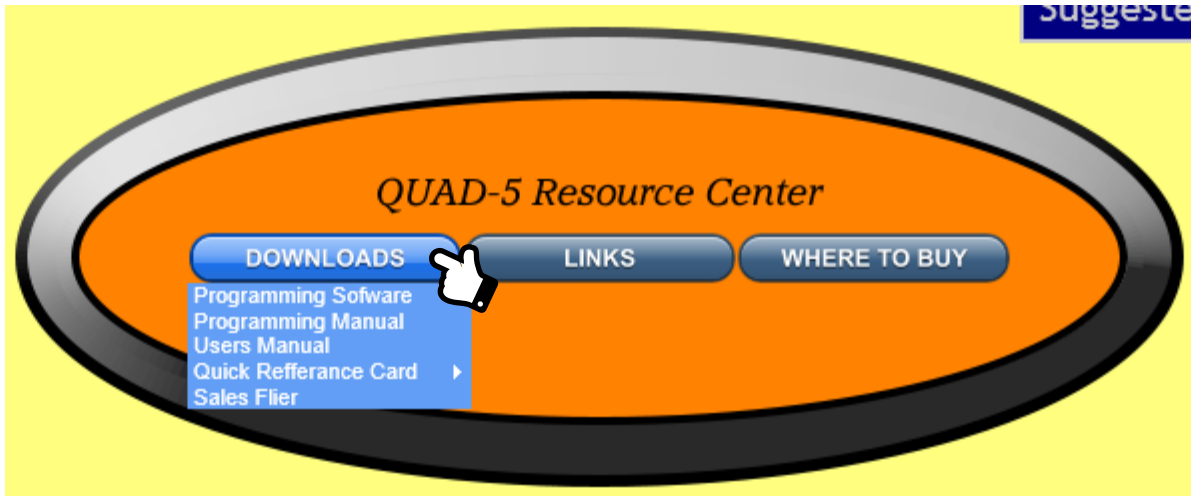
Top Gun Technologies QUAD-5 Programming Software Manual Version 6.0.0

Downloading Software & Installation:

To download the programming software go to http://www.topguntec.com/tgt_quad_5.htm and scroll to the bottom of the page and the menu in the QUAD-5 Resource Center orange oval then point to DOWNLOADS then click on Programming software. At the bottom of the screen you can chose to Open, Save/Save as/Save and open, or cancel your download.

You can go directly to the download at this address: http://www.topguntec.com/index_htm_files/QUAD_5Setup_6.00.rar

Double click on QUAD_5Setup_6.00 to install the program.



Once the program is installed you can run it without rebooting your computer.

Connect the 3.5mm jack to the plug on the back of the radio and the USB connector to the radio. Turn the radio ON. To check communications between the computer and radio select from the menu bar **Program, Read from Radio**. This will load the data stored in the radio into the program. This confirms you are ready to store, retrieve, customize and restore the radio settings of your QUAD-5 transceiver. You can create files for different purposes, like contests, road trips, favorite frequencies for different propagation conditions, known contact frequencies in different geographical areas...the list is only limited by your imagination. Store files by corresponding names to keep them organized. Post saved files for others to load.

Software Download

www.TopGunTec.com

Copyright Top Gun Technologies 2014-2015

Top Gun Technologies QUAD-5 Programming Software Manual Version 6.0.0

With the program running you will see the screen below. You will see that only the channel 1 position has data in it. If you want to start out with data you can select from the menu bar **Program, Read from Radio** or select from the menu bar **Setup, Initial Settings**.

If you start with the almost blank slate you will see that channel 1 has the default starting frequency of each of the six bands. You can only delete this information once another channel has data entered into it. The program must see one channel setup.

There is one emergency channel setting per band. Keep in mind this is a channel number that corresponds to the channel in that band. If selected, the frequency that is programmed for that channel in that band will be selected when that button is pressed.

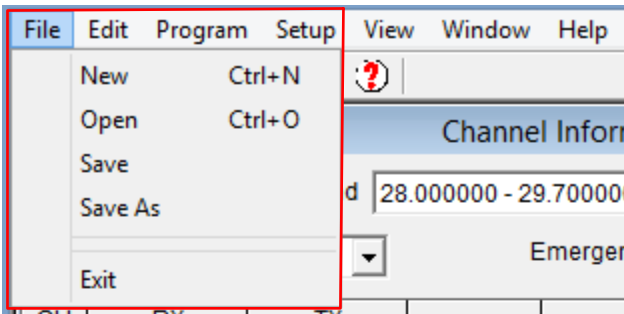
CH No.	RX Frequency	TX FreQuency	BUSY	ECHO	HI-CUT	+10KHz	NB/ANL	RB	Scan
1	28.000000	28.000000	Disable	Enable	Disable	Disable	Enable	Disable	Add
2									
3									
4									
5									
6									
7									
8									
9									
10									
11									
12									
13									
14									
15									
16									
17									
18									
19									
20									
21									
22									
23									
24									
25									

Software Download

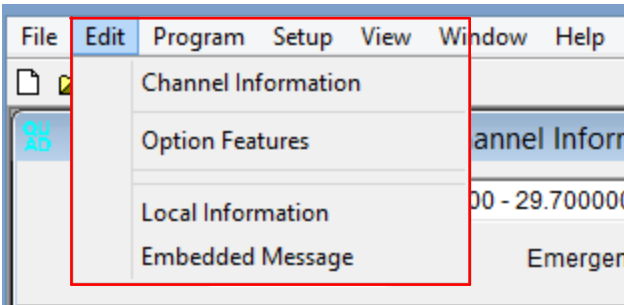
www.TopGunTec.com

Copyright Top Gun Technologies 2014-2015

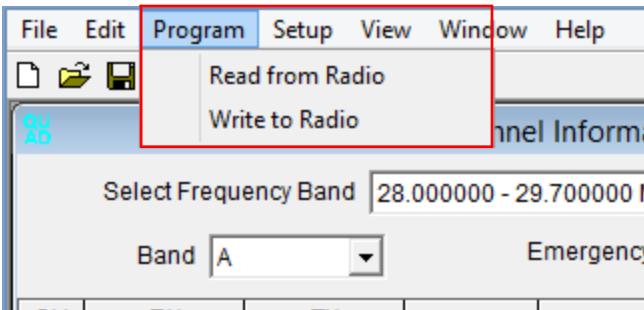
Top Gun Technologies QUAD-5 Programming Software Manual Version 6.0.0



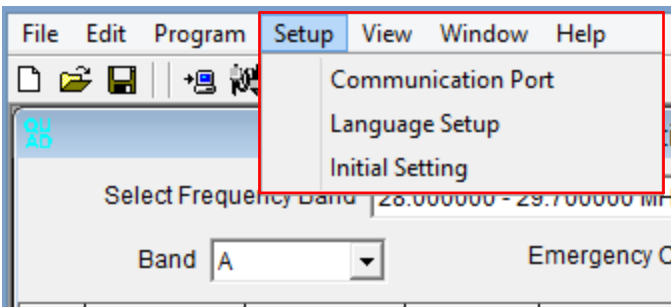
File - New Opens New File And Clears All Data On Screen
File - Open Opens Existing File And Clears All Data On Screen
File - Save Saves Changes To An Existing File
File - Save As Saves To A New File (Prompts For New File Name)
File - Exit Exits Program



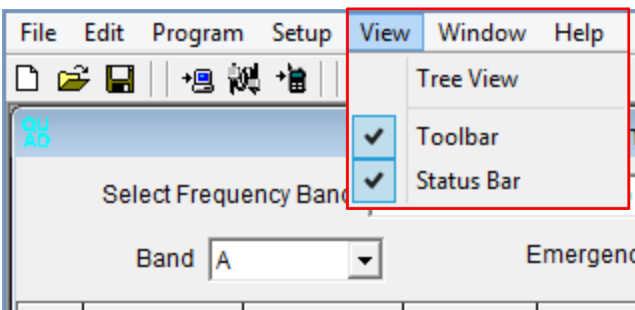
Edit - Channel Information Opens Channel Information Screen
Edit - Option Features Opens Option Features Screen
Edit - Local Information Opens Local Information Screen
Edit - Embedded Message Reads Radio Embedded Information



Program - Read From Radio Reads And Loads Data From Radio Into Program For Viewing And Editing
Program - Write To Radio Writes Data From Program To Radio Overwriting Previous Radio Data



Setup - Communications Port Select The Communications Port Through This Selection
Setup - Language Setup Only English Is Available
Setup - Initial Setting Loads Initial Factory Settings Into Program Replacing All Previous Data (A Complete Factory Reset) (Either 10Meter or Export)



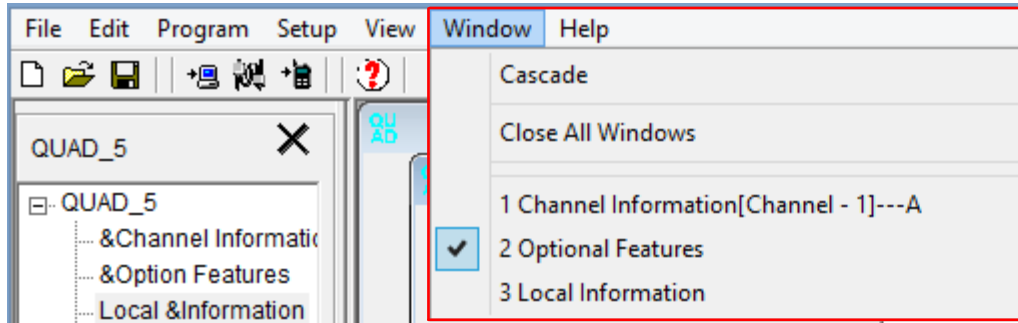
View - Tree View Opens Tree Menu On Left Of Screen
View - Toolbar Opens Toolbar Under Menu Bar
View - Status Bar Opens Status Bar On Bottom Of Screen Displaying COM Port, Date, and Time

Software Download

www.TopGunTec.com

Copyright Top Gun Technologies 2014-2015

Top Gun Technologies QUAD-5 Programming Software Manual Version 6.0.0



Window - Cascade Cascades Or Fans Windows Down Screen
Window - Close All Windows Closes All Windows With One Click
Window - 1,2,3,4 Lists All Open Windows And Check Marks The Active One On Top Layer



Software Download

www.TopGunTec.com

Copyright Top Gun Technologies 2014-2015

Top Gun Technologies QUAD-5 Programming Software Manual Version 6.0.0

&Channel Information: (Left Side TREE MENU)

Choosing This Option on the Left Side Menu Box opens the programmable settings in the Right Side Box..

CH NO:

This column corresponds with the channel number displayed on LED.

BAND:

This pull-down menu allows selecting the band of operation A-F on band selector switch.

Emergency Channel:

This setting sets the "EMG" Channel button on the radio.

The "EMG" Channel button can be set respectively on all bands from band A to band F.

Frequency:

Set Receive Frequency for each channel (28.000 - 29.700 Mhz).or Export (25.615 - 31.105 MHz)

Set Transmit Frequency for each channel (28.000 - 29.700 Mhz).or Export (25.615 - 31.105 MHz)

Receive Frequency and Transmit Frequency can be set independently.

The Offset or Channel Spacing (Step for each channel - usually 10 Khz) can also be set between channels. For instance, the channel spacing could be set for 10 Khz for all channels instead of skipping every 3rd channel as originally setup for jumping over the RC (Remote Control) channels. One could effectively setup a 60 channel 6 Band radio that has continuous coverage.

BUSY:

(BUSY Lock Function)

When ENABLE is selected, the radio will not transmit when receiving signal. The transmission is allowed after the previous signal disappears. When DISABLE is selected, the option is disabled.

ECHO:

When ENABLE is selected, the function ECHO can be used by pressing the echo button. When DISABLE is selected, the ECHO feature can not be used.

HI CUT:

When ENABLE is selected, the HI CUT function is ON. Choosing DISABLE, turns this function OFF.

The HI CUT feature is used as a Tone Control that cuts out high frequencies in the Receive Audio.

This feature is very usefull in reducing ignition noise. The HI CUT button (when activated) is active on a channel by channel selection.

+10KHZ:

When ENABLE is selected, the +10KHZ function is active. When DISABLE is selected, The feature is OFF.

NB/ANL: (Noise Blanker/Automatic Noise Limiter)

When ENABLE is selected, NB/ANL function is active. When DISABLE is selected, NB/ANL is OFF.

RB: (Roger Beep)

When ENABLE is selected, the RB function is active. When DISABLE is selected, the RB function is disabled.

SCAN:

ADD and DEL in scan list. When ADD is chosen, the radio will scan that particular channel. When DEL is chosen, the radio will not scan the selected channel.

Software Download

www.TopGunTec.com

Copyright Top Gun Technologies 2014-2015

Top Gun Technologies QUAD-5 Programming Software Manual Version 6.0.0

&Optional Features: (Left Side TREE MENU)

Allows setting the Programmable Settings in the Right Side Menu Box.

MIC Gain: (Default 31)

Sets the Microphone gain from OFF or 1-63 levels of gain.

MON Gain: (Talkback) (Default OFF)

Sets the TX audio monitor gain from OFF or 1-63 levels of gain.

TOT: (Transmit Timeout Timer) (Default: 180sec)

Settings are 30-600S step in 30S (Set in Seconds)

RB: Roger Beep Frequency (Hz) (Default 1050)

RB Frequency Settings are 0.3-3KHz step 10Hz (Set in Hertz)

RB Time: (ms) (Default 500ms)

Sets the Length of the Roger Beep Tone in milliseconds. Settings are 50-1000ms step 50ms (Set in Milliseconds)

CW side tone: (HZ) (Default 1050)

Sets Continuous Wave (Morse Code) side tone Frequency Settings are 0.3-3KHz step 10Hz (Set in Hertz)

Frequency Step: (Default 10Hz)

Setup PUSH KEY step 10Hz, 100Hz, 1KHz, 10KHz

LCD Display: (Default ON)

Settings are OFF or ON

Scan mode: (Default Squelch Scan)

Scan Mode can be set to Time or Squelch Scan. Squelch Scan Stops when Squelch is opened - Time Scan Stops for Set Time.

Scan Resume Time(sec): (Default 5 sec)

Sets Scan Resume Time after Stopping on Channel. Settings are 1-60sec step 1sec

LCD Display in TX: (Default TX Frequency Display)

Sets Display Mode of LCD During Transmit

TX Frequency Display

SWR LCD Display

Battery Voltage Display

TOT Remain Time Display

SWR protect value: (Default 10.0)

Sets SWR Protection Value. (Prevents Transmit if SWR is Above Value. Settings are 1.2 through 20 Steps 0.1

Battery Voltage Protect Value 1- Min(Volts): (Default 9.0)

Sets Minimum DC Voltage Value.. Settings are 9.0-17V Step 0.1V - Prevents Transmit if Outside Of Range.

Battery Voltage Protect Value 2- Max(Volts): (Default 16.0)

Sets Maximum DC Voltage Value Settings are 9.0-17V Step 0.1V - Prevents Transmit if Outside Of Range

Software Download

www.TopGunTec.com

Copyright Top Gun Technologies 2014-2015

Top Gun Technologies QUAD-5 Programming Software Manual Version 6.0.0

FM Sq Close Delay Time(ms): (Default 50ms)

Sets FM mode Squelch, Delays Speaker Audio after Signal Ends. Settings are 5-300ms Step 5ms

AM Sq Close Delay Time(ms): (Default 50ms)

Sets AM mode Squelch, Delays Speaker Audio after Signal Ends. Settings are 5-300ms Step 5ms.

CW/USB/LSB sq close delay time(ms): (Default 50ms)

Sets CW/USB/LSB Mode Squelch. Same as above Settings are 300ms Step 5ms.

Single Tone(HZ): (Default 1050)

Sets Single Tone Frequency - Holding ASQ Button on Mic While Transmitting (Tone) Settings are 0.3-3KHz Step 10Hz.

Clarifier Mode: (Default RX/TX Frequency)

Settings are FINE - RX/TX FREQUENCY - TX FREQUENCY

Push Mode: (Default Step Frequency)

Settings are COARSE - STEP FREQUENCY - TX FREQUENCY

CW SIDE VOL: (Default 31)

Set the CW side tone volume from OFF or 1-63 settings.

BEEP VOL: (Default 31)

Button push Beep volume can be set from OFF or 1-63 settings.

Mode Option: (Default ALL)

The Mode Option Box has a Checkbox for all Radio Modes.

LSB - USB - FM - AM - PA - CW - Enable Box Must be checked to Make it Available for use.

Single change data: (Default Single Change Data)

If the Main Check Box is selected, Each Channels parameters are set individually by the settings in the main spreadsheet screen. Otherwise, when pressing a button such as the RB button, all channels will have RB when the RB button is pressed.

SWR Protect Enabled: (Default SWR Protect Enabled)

When Enabled, The SWR Test Protection is Active.

DC Protect Enabled: (Default DC Protect Enabled)

When Enabled, The DC Voltage Test Protection is Active.

&Local & information: (Left Side TREE MENU)

Customer Information can be entered here - Example: Customer's Name, Date Purchased, etc.

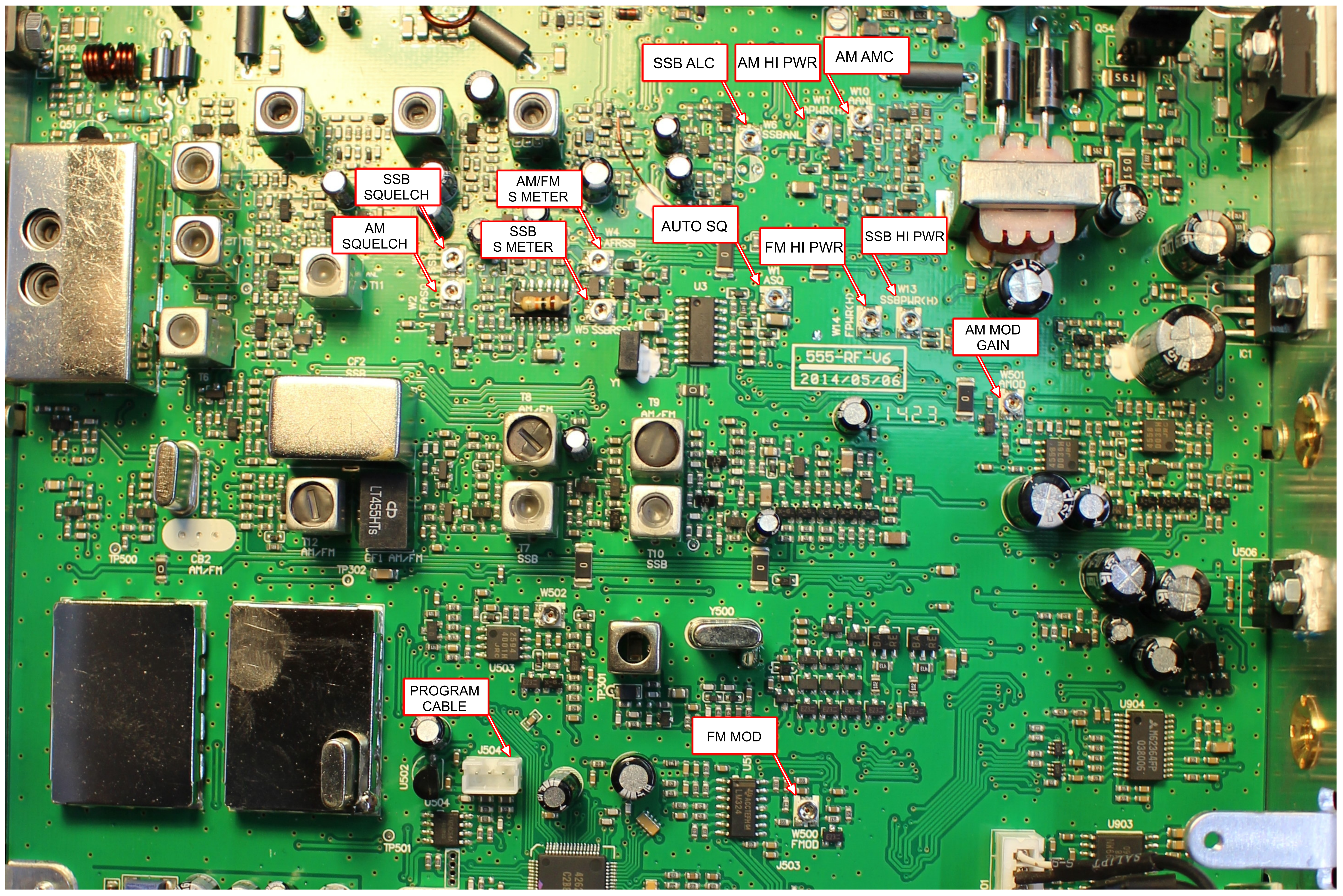
&Embedded & Message: (Left Side TREE MENU) (Read Only)

Radio Information, such as, date of manufacture, software version, maintenance record, series number and etc. is programmed here when manufactured. This Factory Data cannot be changed by the software.

Software Download

www.TopGunTec.com

Copyright Top Gun Technologies 2014-2015



SSB ALC

AM HI PWR

AM AMC

SSB SQUELCH

AM/FM S METER

AM SQUELCH

SSB S METER

AUTO SQ

FM HI PWR

SSB HI PWR

AM MOD GAIN

555-RF-U6
2014/05/06

PROGRAM CABLE

FM MOD



QUAD-5 FUNCTION MENU GUIDE

ENTER FUNCTION MENU: Press and hold FUNC key 2 seconds

CHANGE FUNCTION: Momentarily press FUNC

FUNC VALUE: Rotate channel selector to change value.

The radio will exit from the function menu after a few seconds of inactivity. Following are the Functions in order.

MIC GAIN: *μG* Value (OFF, 0-63) **Default: 31**

TALKBACK: *nB* Value (OFF, 0-63) **Default: OFF**

CW SIDE VOL: *εu* Value (0-63) **Default: 31**

BUTTON BEEP: *bEu* Value (0-63) **Default: 31**

CLARIFIER STEP: *StP* **Default: 10Hz**

10HZ

100HZ

1kHz

10KHZ

CLARIFIER: *CLR* **Default: RT**

FIN=RX

RT=RX/TX

T=TX

CLARIFIER PUSH: *PUS* **Default: STP**

COA=CHANGES TX/RX FREQUENCY

T=CHANGES TX FREQUENCY

STP=CHANGES BLINKING DIGIT FREQUENCY

AUTO SQUELCH: *ASQ* Value ON or OFF **Default: OFF**

TRANSMIT TIMER: *tOt* Value 30-600 sec. **Default: 180**

SCAN TYPE: *SC* **Default: SQ**

SQ= Resume 5 Seconds after signal drop

TI= Resume 5 seconds no signal drop

SWR PROTECT: *tSr* Value (ON or OFF) **Default: ON**

VOLTAGE PROTECT: *tDL* Value (ON or OFF) **Default: ON**

TX DISPLAY: *tLd* **Default: TF**

TF=TRANSMIT FREQ DISPLAY

SR=TRANSMIT SWR DISPLAY

BAT=TRANSMIT BATTERY VOLTAGE DISPLAY

TOT=TRANSMIT TIME OUT TIMER DISPLAY

R. BEEP FREQ: *rBF* Value 300Hz to 3KHz **Default 10⁵⁰HZ**

R. BEEP LENGTH: *rbt* **Default 500ms**

Value 50ms to 1000ms

CW SIDE TONE FREQ: *εFr* **Default 10⁵⁰Hz**

Value 300Hz to 3KHz

TX SINGLE-TONE FREQUENCY: *tOn* **Default 10⁵⁰Hz**

Value 300Hz to 3KHz